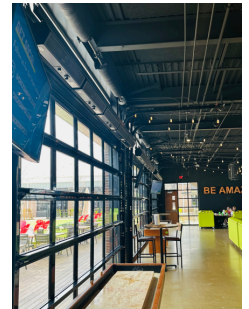
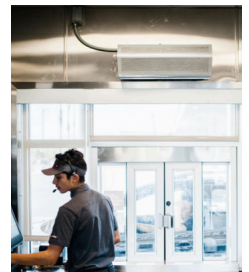




# MARS AIR CURTAINS PROVIDE A NONTOXIC PEST CONTROL SOLUTION TO KEEP YOUR FACILITY FREE OF FLYING INSECTS

## THE BENEFITS OF INSTALLING AN AIR CURTAIN

- Repel windborne contaminants, debris and flying pests
- Minimize air transfer between different interior building zones
- Maintain building temperature when doors are open
- Eliminate pathogens, particulates, viruses and odors
- Enhance occupant comfort and ensure safety
- Improve Indoor Air Quality (IAQ)



Application Images: Above - Fast Food Restaurant Floor Plan; Top Right - Drive-Thru Application; Middle Right - Indoor/Outdoor Dining; Bottom Right - Receiving Door

## MARS PROTECTS AGAINST FLYING PESTS

- **Customer Front Entrances** Keeps flying insects out & conditioned air in.
- **Walk-in Cooler/Freezer** Maintain consistent temperature control to protect perishable products and packaging without the need for plastic strip curtains. Mars UVC® models further extend the shelf life of perishable foods by up to 25%.
- **Dishwasher Dryer** High-volume facilities use air curtains to expedite drying time at a reduced cost.
- **Pass-Thru Windows** Repels infiltration of outside air, flying pests, and fumes from entering open windows.
- **Interior Zone Separation** Minimize air transfer between different zones within a building.
- **Patio Openings** Keeps conditioned air in and flying pests out when patio doors are open.
- **Bathrooms & Lavatory** Mars UVC® tackles the toughest odors and enhances sanitation.
- **Building Customer Entrance/Receiving/ Dock Doors** Keep flying insects out and conditioned air in. Mars UVC® models eliminate VOCs and strong, lingering odors, helping foodservice areas stay cleaner.

## ENTRY & RECEIVING DOOR & PASS-THRU WINDOWS



STD2 (Standard)

### LPV2 (LoPro2)

- Mounting height up to 8'
- Available in Unheated, Electric, & Hot Water/Steam Heat
- Variable Speed Controller
- Low Profile

### STD2 (Standard 2)

- Mounting height 8'-12'
- Available in Unheated, Electric, & Hot Water/Steam Heat
- AMCA Certified (Unheated & Electric Heat)

## SPECIALTY ENTRY & RECEIVING DOORS

### PH (Phantom)

- Mounting height up to 8'-16'
- Available in Unheated, Electric, & Hot Water/Steam Heat
- Recessed mount
- Reduced noise output by up to 25%
- AMCA Certified

### QP (QuietPro™)

- Mounting height up to 8'-12'
- Available in Unheated, Electric, & Hot Water/Steam Heat
- Reduced noise output by up to 25%
- AMCA Certified (QP8)

### Clean Air

- Mounting height up to 10'
- Unheated only
- UVC/UVV, HEPA, & Ionization Filtration

### Sanitation (LPN2/N2/NH2)

- Mounting height up to 8'
- Unheated only
- ETL Sanitation Listed as per NSF/ANSI 37



Clean Air (UVC)

## MID SIZE DOCK & RECEIVING DOORS

### HV2 (High Velocity 2)

- Mounting height 12'-14'
- Available in Unheated, Electric, Hot Water/Steam, & Indirect Fired Gas Heat
- AMCA Certified (Unheated)

### EP2 (Extra Power 2)

- Mounting height 14'-16'
- Available in Unheated, Electric, Hot Water/Steam, & Indirect Fired Gas Heat



EP2 (Extra Power)

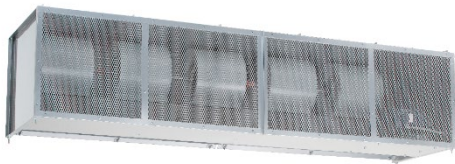
## LARGE DOCK DOORS

### WMI/WMH (Wind Stopping)

- Mounting height 14'-20'
- Available in Unheated, Electric, Hot Water/Steam, & Indirect Fired Gas Heat
- Direct drive motor
- AMCA Certified (Unheated)

### BD (WindGuard)

- Mounting height 14'-32'
- Available in Unheated, Electric, Hot Water/Steam, & Indirect Fired Gas Heat
- Belt drive motor



BD (WindGuard)

## SPECIALTY OPTIONS

WASHDOWN | EXPLOSION PROOF | TAMPER PROOF | COLD STORAGE

## MARS RECOMMENDED ACCESSORIES

### SWITCHES

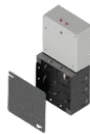
- MECHANICAL
  - COMBO PLUNGER/ROLLER
- MAGNETIC
  - COMMERCIAL SURFACE MOUNTED
  - INDUSTRIAL SURFACE MOUNTED



99-014  
Combination Plunger/Roller Type

### CONTROLLERS

- MOTOR CONTROL PANELS
  - ADJUSTABLE TIME DELAYS
- SOLID-STATE
  - SIMPLELINK® 2
  - BASIC CONTROLLERS



J0021  
Time Delayed Basic Controller (1/2 HP)

### MOUNTING BRACKETS

- OFFSET
- EXTENDED WALL
- TRANSOM



B0005  
Adjustable Combination Mounting Bracket

### FILTERS

- WASHABLE ALUMINUM
  - 1/4" PRESSED (MERV 4)
- THROWAWAY PLEATED
  - HEPA (99.9%, 0.3 MICRONS)
  - 1/2" TO 2" PLEATED (MERV 8)



Pressed Frame Aluminum Filter



atmosphere is everything

**Mars Air Systems**

Air Curtain and Air Door Manufacturer

www.marsair.com • (800) 421-1266 • sales@marsair.com



LEARN MORE ABOUT  
MARS AIR CURTAINS!