



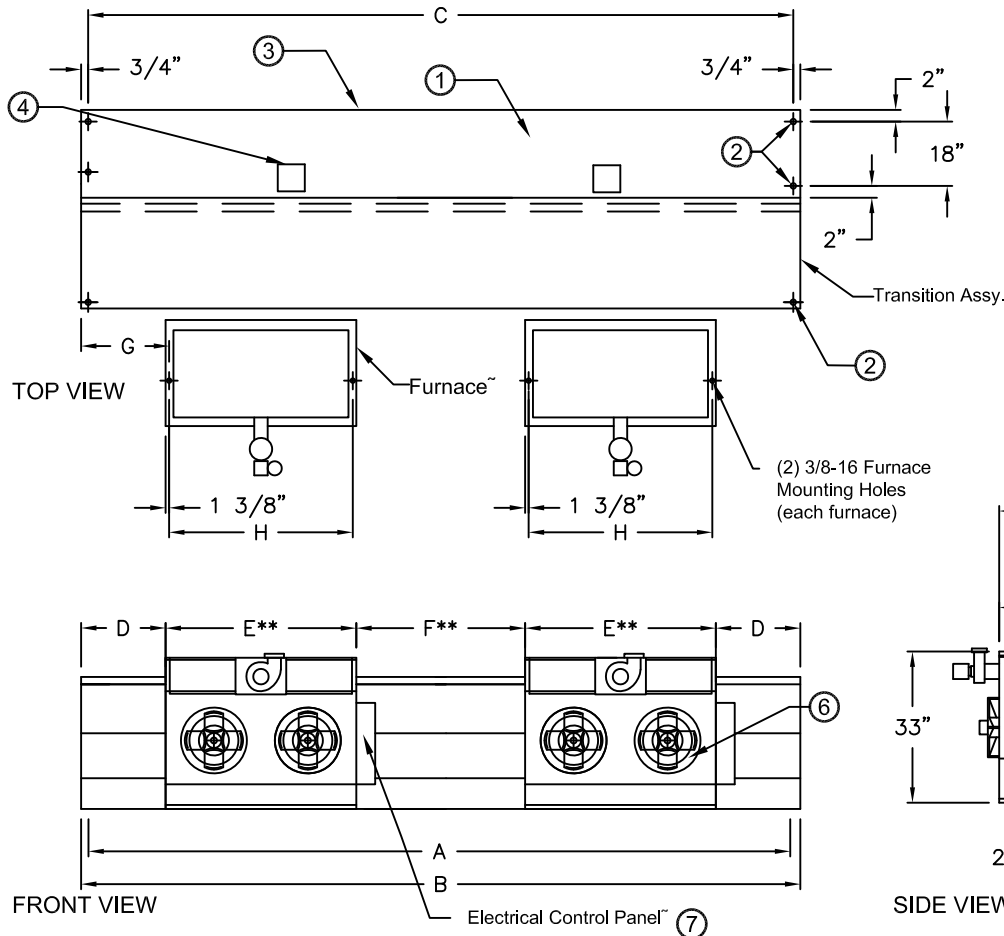
atmosphere is everything

14716 S. Broadway • Gardena, CA 90248 • USA
 TEL: (310) 532-1555 • (800) 421-1266 • FAX: (310) 324-3030
 Web Site: www.marsair.com • E-mail: info@marsair.com

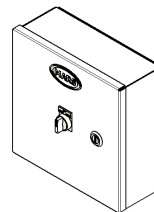
PROJECT		OPTIONS/ITEMS	
TITLE			
COMMENTS		DATE 3/16/23	PAGE
		REV. NO	
MODEL NO. WMH Series	DRAWING NO WMIH-F	DRAWN BY NT	CHECKED BY
		FILE NAME	

Indirect Fired Gas Heated Drawing

WMH (Wind Stopping 16) Series



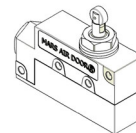
⑧ Recommended Accessories



Control Panels



Remote T'stat
Shipped Loose



Door Limit Switches



Intertek
Furnace Only

Note: MARS reserves the right to change specifications and product design without notice. Such revisions do not entitle the buyer to corresponding changes, improvements additions or replacements for previously purchased equipment.

*Please see Furnace Submittal for Furnace Data and Dimension
 Removal of Furnace may be required for servicing and trouble shooting.

*- Use corresponding letters in "Electrical Data" columns to complete the model numbers.

** For 3 furnace models, please add an additional E and F dims

Notes:

- Furnaces are ETL verified to be 83% efficient with 3/8 overhead mounting hardware for overhead mounting.
- 5/8" mounting holes (6) provided, (2) on each end of air curtain and (1) on each end of transition assembly.
- Cabinet has sufficient strength for fastening from overhead on both ends without intermediate support. Furnace must be mounted at least 2" away from the transition.
- One watertight electrical junction box per motor mounted on top center of each motor.
- Unit is to be installed such that air flow is unobstructed. Air discharge nozzle containing adjustable air directional vanes with 40° sweep front to back.
- Furnaces with impellers have positive pressure, 20 gauge aluminized tubular heat exchanger with in-shot burner technology, power vented exhaust (horizontal or vertical), single stage gas valve, direct spark ignition and certified for Category I and III venting.
- Circuit protection as per NEC by others.
- Optional motor control panel and door limit switch are field installed and/or wired by others. The door limit switch is to be mounted such that the air curtain turns on as door begins to open. To prevent unit damage, the air curtain must be installed such that the bottom of the air curtain is not below the door header.

MODEL NUMBER	Nozzle Width (in) A	Overall Width (in) B	Mounting Centers (in) C	End Space (in) D	Furnace Width (in) E	Center Space (in) F	Mounting Distance (in) G	End Dim (in) H	Furnace Size (MBH)
WMH96-2I*-TS	96	99	97 1/2	8 3/8	32 3/4	16 3/4	9 3/4	30 5/8	2@250
WMH120-2I*-TS	120	123	121 1/2	5 3/8	50 3/4	10 3/4	6 3/4	48 5/8	2@400
WMH144-2I*-TS	144	147	145 1/2	11 3/8	50 3/4	22 3/4	12 3/4	48 5/8	2@400
WMH168-3I*-TS	168	171	169 1/2	3 1/8	50 3/4	6 1/4	4 1/2	48 5/8	3@350
WMH192-4I*-TS	192	195	193 1/2	7 1/8	50 3/4	14 1/4	8 1/2	48 5/8	3@400

WMH (Wind Stopping 16) Series

Indirect Gas Fired
Model Lengths 96" – 192"



atmosphere is everything

14716 S. BROADWAY, GARDENA, CA 90248 • Ph: (310) 532-1555 Fax: (310) 532-3030 • www.marsair.com
© Copyright Mars Air Systems, LLC 2014

Indirect Gas Fired Data Sheet

Applications: Environmental Separation = Max Height 20' / Insect Control = Max Height 18'

WMH (Wind Stopping 16)	Mechanical Data							Lab Data					
	Model Number	Nozzle Length (in)	Length (in)	Depth (in)	Height (in)	Motor (hp)	Total Weight** (lbs)	Furnace Weight (lbs)	Max Velocity (fpm)	Max Volume (cfm)	Avg Velocity (fpm)	Volume (cfm)	Uniformity (%)
WMH96-2I*-TS	96	99	78 1/2	33	Two 5	1151	2 @ 211	7300	21900	3732	10824	91	9390
WMH120-2I*-TS	120	123	78 1/2	33	Two 5	1519	2 @ 335	7600	28500	4057	15014	89	12420
WMH144-2I*-TS	144	147	78 1/2	33	Two 7	1693	2 @ 335	7400	33300	3816	17022	82	13300
WMH168-3I*-TS	168	171	78 1/2	33	Three 5	2175	3 @ 321	6700	35175	3822	19845	90	17700
WMH192-4I*-TS	192	195	78 1/2	33	Four 5	2451	3 @ 335	7300	43800	3722	21648	91	18760

* - Use corresponding letters in "Electrical Data" columns to complete the model numbers.

Note: Data above is for 60 Hz, 17% reduction in the performance data with 50 Hz.

** - Total Weight includes air curtain, transition, and furnace weights.

Features:

Air Curtain and Transition

- ❖ 5 & 7 HP continuous duty industrial motors
- ❖ Direct drive unit for heavy duty industrial projects
- ❖ Top mounting holes provided (5/8")
- ❖ Cabinet has sufficient strength for fastening from overhead on both ends without intermediate support
- ❖ Adjustable air directional vanes with 40° sweep front to back
- ❖ Transition is shipped fully assembled and fastened to unit (overhead support required)
- ❖ Standard color is Titanium Silver
- ❖ Rust preventative electrostatic polyurethane powder coating
- ❖ 12-month parts warranty
- ❖ Freight Not Included (FOB Factory)
- ❖ Proudly Made in the USA

Indirect Gas Fired Furnaces

- ❖ ETL verified to be 83% efficient
- ❖ In-shot burner technology
- ❖ Aluminized tubular heat exchanger (20 gauge)
- ❖ Positive pressure 120V impellers (separate 120V, 1Ø power required)
- ❖ Power vented exhaust
- ❖ Single stage gas valve
- ❖ Standard direct spark ignition
- ❖ Certified for Category I and III Venting
- ❖ Natural gas
- ❖ Factory test fired
- ❖ Overhead mounting hardware provided (2 per furnace)

Mars Recommended Accessories (see submittals for additional details):

- ❖ Door limit switches
 - 99-125, Industrial surface-mounted door limit switch
- ❖ Controllers
 - MCP*-†‡, Motor Control Panel, 24V control voltage (* = HP Code, † = # of Motors, ‡ = Voltage Code)
Note: possible HP Codes = E (5 HP), F (7 HP)
 - MCP-TD, Adjustable time delay, 1sec-100hr (panel required)
- ❖ IDF-2STG, Two-stage heat exchanger
- ❖ IDF-SS, 409 stainless steel heat exchanger
- ❖ IDF-MOD-RS, Room sensor for modulating gas valves (0-10VDC/4-20mA control voltage by others)

Sound Levels: (measured at 10' in an open field)

2 Motor Unit = 69 dBA, 3 Motor Unit = 70 dBA & 4 Motor Unit = 72 dBA

Indirect Fired Gas Data						
Model Number	# of Furnaces	Input MBH per Furnace	Total Output MBH	Temp Rise (°F)	Flue Size	Natural Gas (NPT) CONN
WMH96-2I*-TS	2	250	415	36	5" Rnd	1/2"
WMH120-2I*-TS	2	400	664	41	6" Rnd	3/4"
WMH144-2I*-TS	2	400	664	36	6" Rnd	3/4"
WMH168-3I*-TS	3	350	872	41	6" Rnd	3/4"
WMH192-4I*-TS	3	400	996	43	6" Rnd	3/4"

* - Use corresponding letters in "Electrical Data" columns to complete the model numbers.

Note: Gas pressure required min/max in ("wc)(kPa): Natural Gas (3.5/14)(0.9/3.5) and LP (10/14)(2.5/3.5)

Electrical Data (FLA)	Unit Voltage (Voltage Code)			Furnace
	208/230v (E/F)	460v (H)	575v (I)	115V
WMH96-2I*-TS	38/31.6	15.8	12.6	16.0
WMH120-2I*-TS	38/31.6	15.8	12.6	27.0
WMH144-2I*-TS	--/42.0	21.0	16.8	27.0
WMH168-3I*-TS	57/47.4	23.7	18.9	40.5
WMH192-4I*-TS	76/63.2	31.6	25.2	40.5

* - Use corresponding letters in "Electrical Data" columns to complete the model numbers.

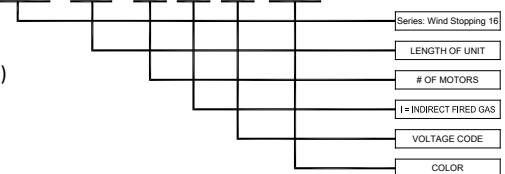
Alternate voltage codes with FLA (Full Load Amp) data:

380-415V/3Ø/50Hz (W) - 6.6A per motor (5HP), 8.9A per motor (5HP)

Note: For ampacity, multiply FLA X 1.25

EXAMPLE

WMH144-2 I H - TS



Intertek
Furnace Only