

QP10 (QuietPro 10) Series

Electric Heated

Model Lengths: 36"–144"

Environmental Separation (up to 12')

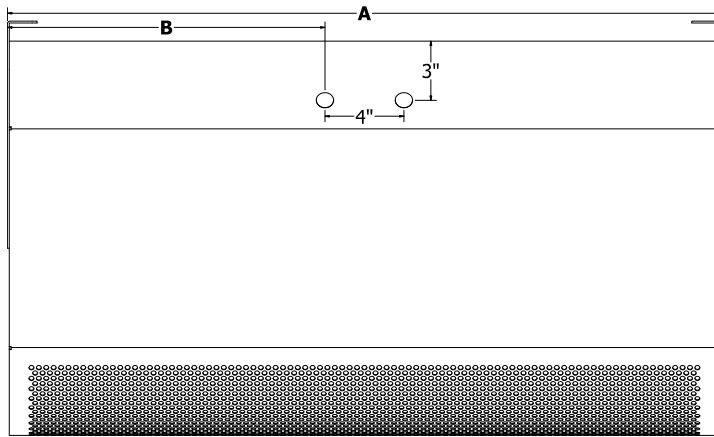
Insect Control (up to 10')



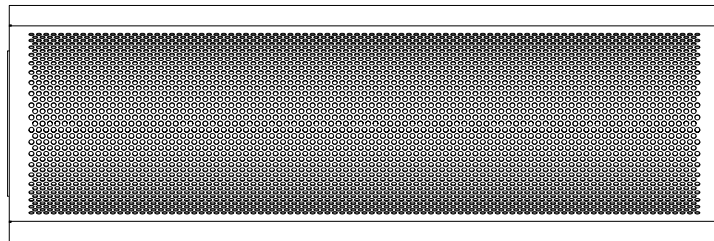
atmosphere is everything

14716 S. BROADWAY, GARDENA, CA 90248 • Ph: (310)532-1555 • Fax: (310)-532-3030 • www.marsair.com

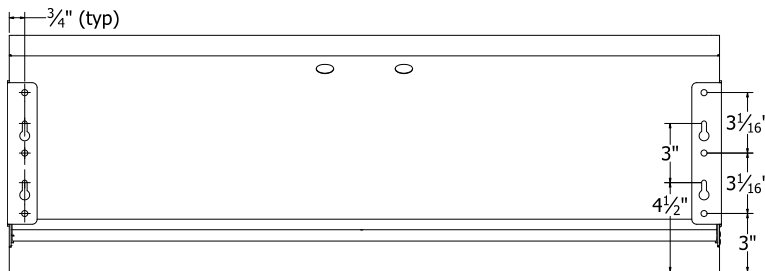
© Copyright Mars Air Systems, LLC 2014



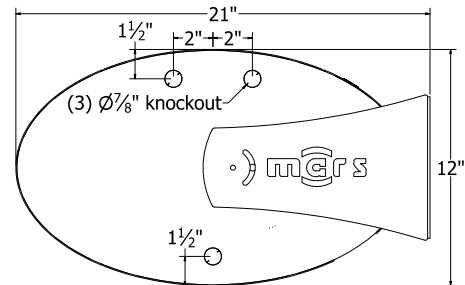
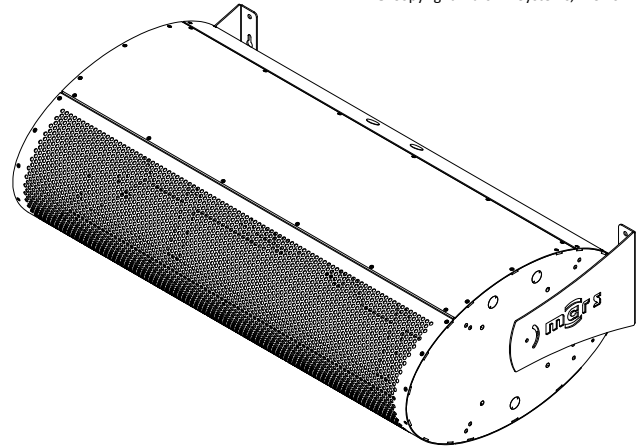
TOP VIEW



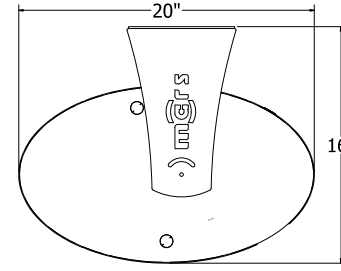
FRONT VIEW



REAR VIEW



SIDE VIEW



TOP MOUNT
(ROTATE BRACKETS)



Notes:

1. Recommended service clearances are 2" to the left and right sides, and 18" on top and in front of the unit.
2. Circuit protection (per NEC) to be installed by others.
3. To prevent accidental damage during operation, unit must be installed so that the bottom of the air curtain does not extend below the door header.
4. Units up to 48" can be fastened to wall on both ends without intermediate support. Longer units require one or more intermediate points of support.

Model Number	Mechanical Data						Lab Data				
	Overall Length A (in)	Nozzle Length (in)	Top Knockout Location B (in)	# Intermediate Supports	Motor (hp)	Weight (lb)	Max Core Velocity at Nozzle (fpm)	Avg Velocity (fpm)	Volume (cfm)	Uniformity (%)	Power Rating (watt)
<input type="checkbox"/> QP1036-1E**-AL	36	36	10 1/2	-	1/2	90	3609	1387	1040	79	406
<input type="checkbox"/> QP1042-1E**-AL	42	42	13 1/2	-	1/2	95	3537	1314	1150	82	499
<input type="checkbox"/> QP1048-1E**-AL	48	48	16 1/2	-	1/2	100	3855	1149	1149	59	511
<input type="checkbox"/> QP1072-2E**-AL	72	72	31 1/2	1	(2) 1/2	180	3609	1387	2080	79	812
<input type="checkbox"/> QP1084-2E**-AL	84	84	37 1/2	1	(2) 1/2	190	3537	1314	2300	82	998
<input type="checkbox"/> QP1096-2E**-AL	96	96	43 1/2	1	(2) 1/2	225	3855	1149	2298	59	1022
<input type="checkbox"/> QP10108-3E**-AL	108	108	31 1/2	2	(3) 1/2	270	3609	1387	3120	79	1218
<input type="checkbox"/> QP10120-3E**-AL	120	120	35 1/2	2	(3) 1/2	280	4077	1406	3516	77	1560
<input type="checkbox"/> QP10144-3E**-AL	144	144	43 1/2	2	(3) 1/2	330	3855	1149	3447	59	1533

* – Use corresponding letters in "Electrical Data" column headers (see page 2) to complete the model numbers.

Note: above data is for 60 Hz at 1725 RPM. For 50 Hz, RPM is 1425 with a 17% reduction in performance.

NOTE: Mars Air Systems, LLC reserves the right to change specifications and product design without notice. Such revisions do not entitle the buyer to corresponding changes, improvements, additions, or replacements for previously purchased equipment.

QP10 (QuietPro 10) Series

Electric Heated

Model Lengths: 36"–144"

Environmental Separation (up to 12')

Insect Control (up to 10')



atmosphere is everything

14716 S. BROADWAY, GARDENA, CA 90248 • Ph: (310)532-1555 • Fax: (310)-532-3030 • www.marsair.com

© Copyright Mars Air Systems, LLC 2014

Standard Features:

Air Curtain

- ❖ ETL-certified to conform to UL 507 (US) and CSA 22.2 (Canada) standards, for indoor use
- ❖ Sleek self-contained one-piece heavy-gauge metal design
 - Standard finish is anodized aluminum (AL)
- ❖ ½ HP continuous duty Totally Enclosed Air Over (TEAO) motors (NEMA 1)
- ❖ Adjustable air directional vanes with 40° sweep front to back
- ❖ 18-month parts warranty
- ❖ Freight included (FOB continental USA)
- ❖ Proudly made in the USA

Electric heater coil and wiring

- ❖ Coils are open type (for rapid temperature rise) and are located directly in the air curtain's intake air stream
- ❖ Manual reset thermal overload protection provided
- ❖ Control voltage is 24V
- ❖ Controls are internally mounted and prewired to receive power connection – accessible through the bottom intake or top access panels
- ❖ 24-volt thermostat with "heat/off/fan" capability is shipped loose for field installation
 - Not applicable for units with SimpleLink

Mars Recommended Accessories (see [catalog](#) for complete listing):

- ❖ [Door Limit Switches](#) (\$) ☐ 99-018, Commercial surface mounted magnetic switch, 24V
 - ❖ [Controllers](#) ☐ SK-EU, [SimpleLink](#), 208-575V (460-575V, 3PH needs additional 115-230V, 1PH power), Integral Control, NEMA1
 - ❖ [Factory Mounted Control Options](#) ☐ INS-TD, Adjustable time delay (1 sec to 17 min) ☐ INS-HD, Heat on demand ☐ INS-2S, Unit mounted 2 speed switch (460-575V, 3PH needs additional 115V-230V, 1PH power) ☐ BMS-300, BMS for monitor and control
Note: dry contact provided in panel for monitoring motor and heater. 24Vac signal provided from panel for controlling motor and heater
 - ❖ [Disconnects](#) (\$) ☐ 99-122 & 99-123, Non-Fused Disconnect, remote mounted, 600V, 32A & 80A respectively, 3 Pole, IP65 ☐ 99-***-**, Fused Disconnect, remote mounted, 240V-600V, 30A-100A, 3 Pole, NEMA3R (see disconnect submittals for complete part numbers)
- (S) = Shipped loose

Sound Levels (measured at 10' in a free field):

1 Motor Unit = 53 dBA, 2 Motor Unit = 55 dBA, 3 Motor Unit = 57 dBA, 4 Motor Unit = 59 dBA

Three Phase Electrical Data Full Load Amp (FLA)	Unit Voltage (Voltage Code)			Heater Kilowatts (Wattage Code)			Temp Rise °F
	208V/3Ø <input type="checkbox"/> (E)	230V/3Ø <input type="checkbox"/> (F)	460V/3Ø <input type="checkbox"/> (H)	(H)	(N)	(S)	
<input type="checkbox"/> QP1036-1E**-AL	36.5	33.5	16.8	12	-	-	36
<input type="checkbox"/> QP1042-1E**-AL	36.5	33.5	16.8	12	-	-	33
<input type="checkbox"/> QP1048-1E**-AL	36.5	33.5	16.8	12	-	-	33
<input type="checkbox"/> QP1072-2E**-AL	72	66	32.6	-	24	-	36
<input type="checkbox"/> QP1084-2E**-AL	72	66	32.6	-	24	-	33
<input type="checkbox"/> QP1096-2E**-AL	72	66	32.6	-	24	-	33
<input type="checkbox"/> QP10108-3E**-AL	107.5	98.5	48.4	-	-	36	36
<input type="checkbox"/> QP10120-3E**-AL	107.5	98.5	48.4	-	-	36	32
<input type="checkbox"/> QP10144-3E**-AL	107.5	98.5	48.4	-	-	36	33

* - Use corresponding letters in "Voltage Code" and "Wattage Code" column headers to complete the model numbers.

Ampacity (MCA) = total FLA x 1.25

Amps per motor (included in values above):

2.5A @ 208V/1Ø; 1.8A @ 208V/3Ø; 1.6A @ 230/3Ø; 0.8A @ 460V/3Ø.

Single Phase Electrical Data Full Load Amp (FLA)	Unit Amperage (Voltage Code)		Heater Kilowatts (Wattage Code)			Temp Rise °F
	208V/1Ø <input type="checkbox"/> (E)	230V/1Ø <input type="checkbox"/> (F)	(B)	(H)	(K)	
<input type="checkbox"/> QP1036-1E**-AL	31.5	29.5	6	-	-	18
<input type="checkbox"/> QP1042-1E**-AL	31.5	29.5	6	-	-	16
<input type="checkbox"/> QP1048-1E**-AL	31.5	29.5	6	-	-	17
<input type="checkbox"/> QP1072-2E**-AL	63	58	-	12	-	18
<input type="checkbox"/> QP1084-2E**-AL	63	58	-	12	-	16
<input type="checkbox"/> QP1096-2E**-AL	63	58	-	12	-	17
<input type="checkbox"/> QP10108-3E**-AL	94.5	86.5	-	-	18	18
<input type="checkbox"/> QP10120-3E**-AL	94.5	86.5	-	-	18	16
<input type="checkbox"/> QP10144-3E**-AL	94.5	86.5	-	-	18	18

* - Use corresponding letters in "Voltage Code" and "Wattage Code" column headers to complete the model numbers.

Ampacity (MCA) = total FLA x 1.25

Amps per motor (included in values above): 2.5A @ 208-230V/1Ø

EXAMPLE

QP10 72 - 2 E H N - AL

Series: Vortex
LENGTH OF UNIT
OF MOTORS
E = ELECTRIC HEATED
VOLTAGE CODE
WATTAGE CODE
COLOR

