



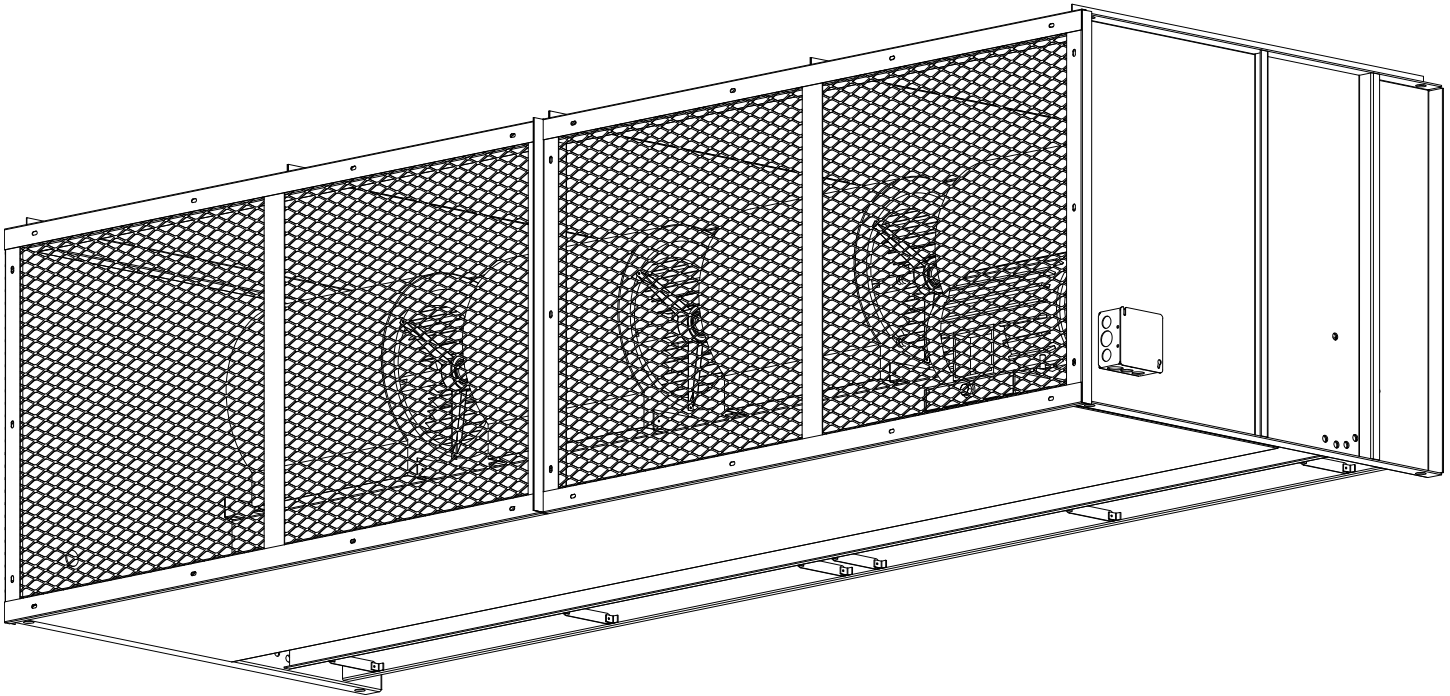
BD26 Submittal Package

atmosphere is everything

14716 S. BROADWAY, GARDENA, CA 90248 • Ph: (310)532-1555 Fax: (310)-532-3030 • www.marsair.com
© Copyright Mars Air Systems, LLC 2014

BD26 Unheated Series

Belt Drive 26 Industrial Air Curtain Submittal Package



Submitted by:

Mars Air Systems, LLC
14716 S. Broadway
Gardena, CA 90248

| | |
|---------------------|--|
| Project Name | |
| P.O.# | |
| S.Q. | |
| Company | |
| Print Name | |
| Signature | |
| Date | |

(Electronic Signature Preferred)

Company Seal or Stamp

NOTE: Mars Air Systems, LLC reserves the right to change specifications and product design without notice. Such revisions do not entitle the buyer to corresponding changes, improvements, additions, or replacements for previously purchased equipment.

MARS AIR SYSTEMS, LLC • GARDENA, CA • USA



atmosphere is everything

14716 S. BROADWAY, GARDENA, CA 90248 • Ph: (310)532-1555 Fax: (310)-532-3030 • www.marsair.com
© Copyright Mars Air Systems, LLC 2014

Table of Contents

| <u>Page #</u> | <u>Content</u> |
|----------------------|---|
| 3-4 | Unit Submittal |
| 5 | Typical Wiring Diagram |
| 6-7 | Accessory Installation Supplement |
| 8-11 | Installation, Operation, and Maintenance Manual |
| 12 | Troubleshooting Guide |
| 13 | Motor Resistance |
| 14-15 | Replacement Parts |
| 16 | Warranty |
| 17-26 | Sample CSI Spec |
| 27 | Reference Links |

BD26 (Belt Driven 26) Series

Unheated

Model Lengths: 96"–192"

Environmental Separation (up to 28')

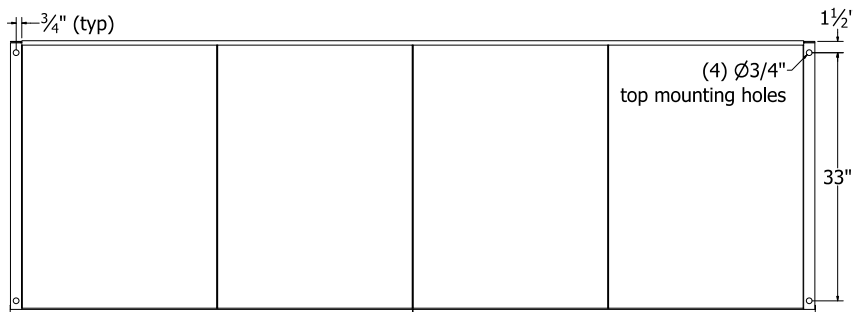
Insect Control (up to 26')



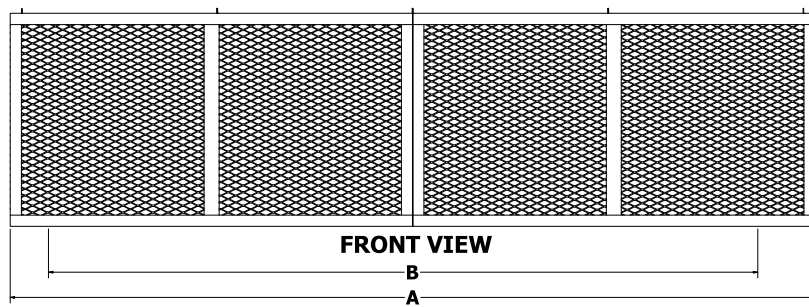
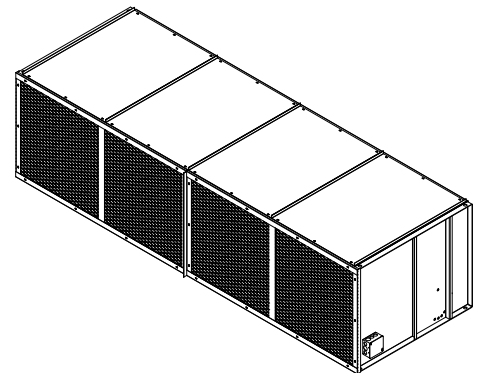
atmosphere is everything

14716 S. BROADWAY, GARDENA, CA 90248 • Ph: (310)532-1555 • Fax: (310)-532-3030 • www.marsair.com

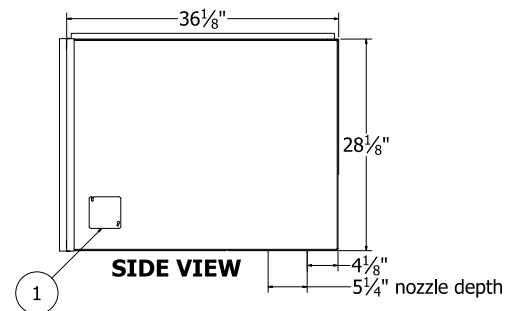
© Copyright Mars Air Systems, LLC 2014



TOP VIEW



FRONT VIEW



SIDE VIEW

Notes:

1. External 4"x4" junction box for electrical wiring provided on right side of unit.
2. Recommended service clearances are 6" to the left and right sides, 24" on top, and 24" in front of the unit.
3. Circuit protection (per NEC) to be installed by others.
4. To prevent accidental damage during operation, unit must be installed so that the bottom of the air curtain does not extend below the door header.
5. Unit can be suspended from overhead on both ends without intermediate support.

| Model Number | Mechanical Data | | | | | Lab Data | |
|---|--------------------------|-------------------------|----------------|---------------|----------------|-----------------------|---------------------|
| | Overall Length A (in) | Nozzle Length B (in) | Mounting Width | Motor (hp) | Weight (lb) | Max Velocity (fpm) | Max Volume (cfm) |
| <input type="checkbox"/> BD2696-1U*-TS | 107 | 96 | 105 ½ | 15 | 750 | 6500 | 18700 |
| <input type="checkbox"/> BD26120-1U*-TS | 131 | 120 | 129 ½ | 20 | 850 | 6500 | 23400 |
| <input type="checkbox"/> BD26144-1U*-TS | 155 | 144 | 153 ½ | 25 | 950 | 6500 | 29200 |
| <input type="checkbox"/> BD26168-1U*-TS | 179 | 120 | 177 ½ | 25 | 1050 | 6500 | 32700 |
| <input type="checkbox"/> BD26192-1U*-TS | 203 | 192 | 201 ½ | 30 | 1150 | 6500 | 37400 |

* – Use corresponding letters in "Electrical Data" column headers (see page 2) to complete the model numbers.

Note: above data is for 60 Hz at 1300 RPM. For 50 Hz, RPM is 1080 with a 17% reduction in performance.

BD26 (Belt Driven 26) Series

Unheated

Model Lengths: 96"–192"

Environmental Separation (up to 28')

Insect Control (up to 26')



atmosphere is everything

14716 S. BROADWAY, GARDENA, CA 90248 • Ph: (310)532-1555 • Fax: (310)-532-3030 • www.marsair.com

© Copyright Mars Air Systems, LLC 2014

Standard Features:

- ❖ Designed for indoor/outdoor use
- ❖ Self-contained one-piece heavy-gauge corrosion-proof paint lock metal design
- ❖ Rust preventative and fire-retardant electrostatic polyurethane powder coating
 - Standard color is Titanium Silver (TS)
- ❖ 15 to 30 HP continuous duty Premium Efficiency industrial motors
 - Motor shall be inverter rated Totally Enclosed Fan Cooled (TEFC) suitable for continuous heavy-duty operation
- ❖ Belt Drive system with adjustable sheaves and pulleys
 - Motor shall be internally mounted in the cabinet to prevent damage and to eliminate the need for a belt guard, complying with OSHA requirements
- ❖ Adjustable air directional vanes with 40° sweep front to back
- ❖ Adjustable perforated volume dampers capable of reducing air velocity up to 50%
- ❖ 12-months parts warranty
- ❖ Freight not included
- ❖ Proudly made in the USA

Mars Recommended Accessories (see [catalog](#) for complete listing):

- ❖ [Door Limit Switches](#) (§)
 - ☐ 99-125, Industrial surface mounted magnetic switch (controller required)
- ❖ Controllers
 - ☐ MCP-1U*, [Motor Control Panel](#), 120V control voltage (§ = HP Code, * = Voltage Code) (§)

Note: possible HP codes = I (15 HP), J (20 HP), K (25 HP) or L (30 HP)

- ☐ MCP-TD, Adjustable time delay, 1sec-100hr (panel required)
- ☐ MCP-24V, Low voltage control option (panel required)
- ☐ BMS-303, BMS for monitor and control (panel with MCP-24V required)

Note: Dry contact provided in panel for monitoring motor. 24Vac signal provided from panel for controlling motor.

(§) = Shipped loose

Sound Levels (measured at 10' in a free field):

15 HP Motor Unit = 76 dBA, 20 HP Motor Unit = 77 dBA, 25 HP Motor Unit = 78 dBA, 30 HP Motor Unit = 79 dBA

| Electrical Data Full Load Amp (FLA) | Unit Amperage (Voltage Code) | | |
|---|---|---|---|
| | 208-230V/3Ø <input type="checkbox"/> (G) | 460V/3Ø <input type="checkbox"/> (H) | 575V/3Ø <input type="checkbox"/> (I) |
| <input type="checkbox"/> BD2696-1U*-TS | 42/40 | 20 | 15.6 |
| <input type="checkbox"/> BD26120-1U*-TS | 55/51 | 25.5 | 20.2 |
| <input type="checkbox"/> BD26144-1U*-TS | 65/60 | 30 | 24.8 |
| <input type="checkbox"/> BD26168-1U*-TS | 65/60 | 30 | 24.8 |
| <input type="checkbox"/> BD26192-1U*-TS | 78/71 | 35.5 | 29.7 |

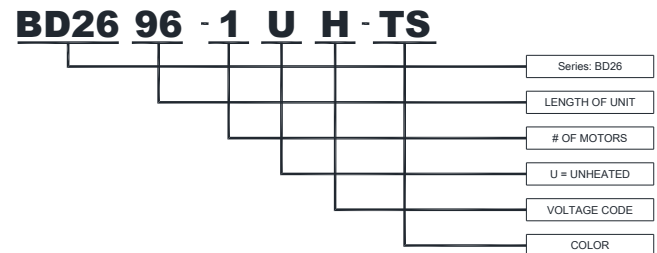
* – Use corresponding letters in "Voltage Code" column headers to complete the model numbers.

Ampacity (MCA) = total FLA x 1.25

Alternate voltage codes with FLA data:

380-415V/3Ø/50Hz (W) – 15.5A per motor (15HP derates to 10HP), 22.5A per motor (20HP derates to 15HP), 30A per motor (25HP), 36.5A per motor (30HP derates to 25HP)

EXAMPLE





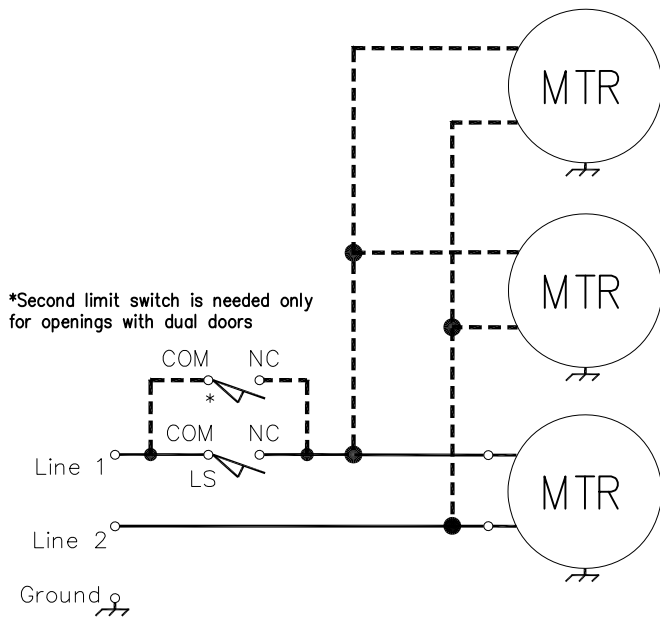
atmosphere is everything

14716 S. Broadway • Gardena, CA 90248 • USA
TEL: (310) 532-1555 • (800) 421-1266 • FAX: (310) 324-3030
Web Site: www.marsair.com • E-mail: info@marsair.com

| | | | | | | | | | |
|-----------|----------|------------|---------------|----------|----|------------|--|---------------|------|
| MODEL NO. | Series 2 | DRAWING NO | TYPICAL-UNHTD | DRAWN BY | BH | CHECKED BY | | OPTIONS/ITEMS | |
| | | | | | | | | DATE | PAGE |
| | | | | | | | | 04/08/25 | |
| | | | | | | | | REV. NO | 2 |
| | | | | | | | | FILE NAME | |

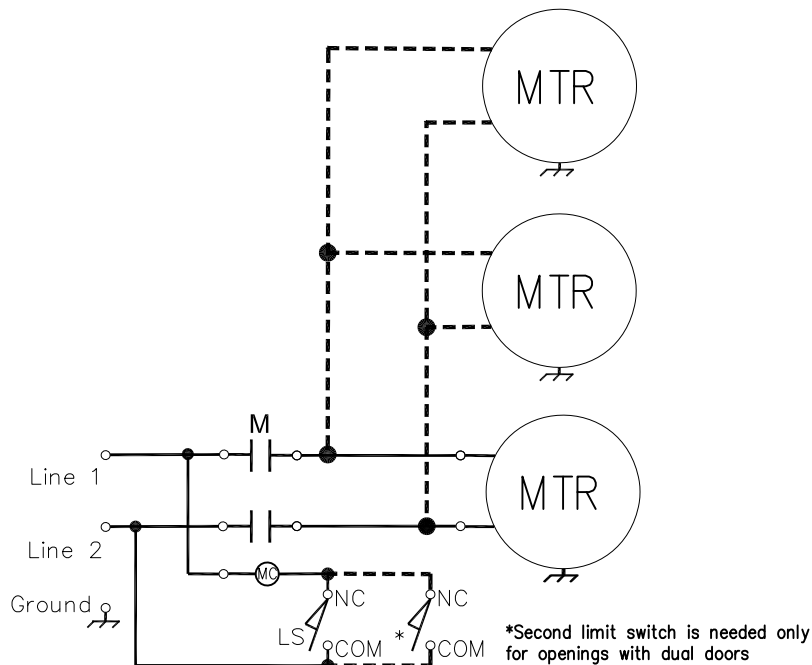
SINGLE PHASE

TYPICAL UNHEATED DIAGRAMS



115V/208-230V Single Phase Motor

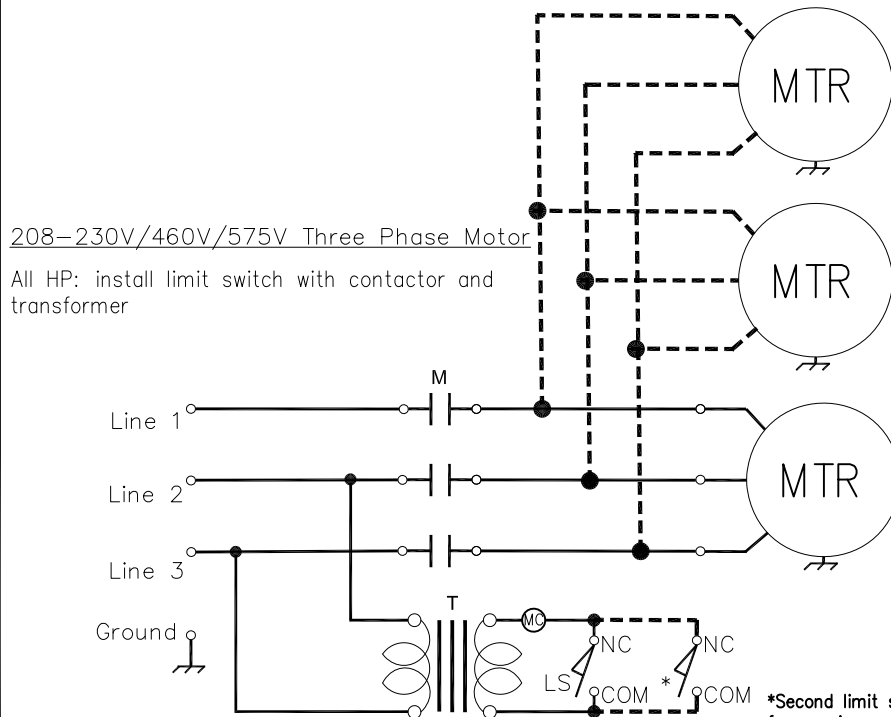
≤1 HP: limit switch can be installed in-line with air curtain power



115V/208-230V Single Phase Motor

>1 HP: install limit switch with contactor

THREE PHASE



Typical Single Phase Motor Terminal Connections:

For 1/2 HP: <1> is Common for 115V

<1> is Hot for 208-230V

<2> is Low Speed

<3> is High Speed

<4> is Ground

<5> is Medium Speed

For 1 HP: <1> is Common for 115V, 208-230V

<2> is High Speed

<3> is Low Speed

<4> is Ground

Notes: This wiring diagram is applicable for Single Phase motors as follows:

LPV2: Up to 2 motors

STD2: Up to 3 motors

HV2: 1 motor

*See Door Limit Switch submittal for additional switch info

SYMBOLS

M - Contactor or Motor Starter

MC - Contactor Coil

T - Control Transformer

ACCESSORY INSTALLATION SUPPLEMENT

Door Limit and Magnetic Reed Switches

1. Mars door limit and magnetic reed switches are available with NEMA 1, 4X and 7 ratings. Contact the factory for additional ratings and details. (See FIG. 1 for typical single swing, hinged door type, door limit switch installation)

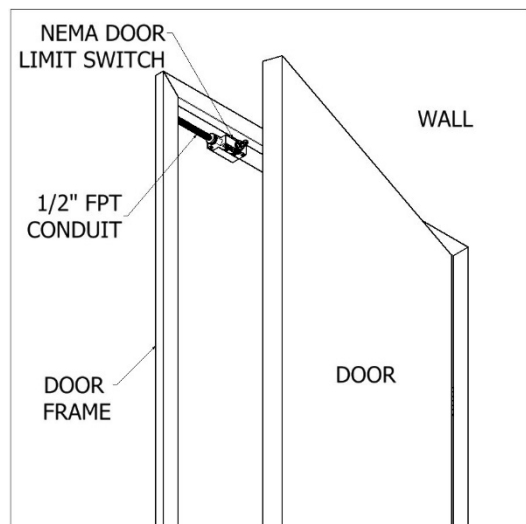


FIG. 1

2. Use light gauge materials when field fabricating brackets to activate and deactivate the door limit switch(s). (FIG. 2) Figure 2 also shows the typical installation of the combination plunger/roller type NEMA 1 door limit switch, for all non-hinged style doors.

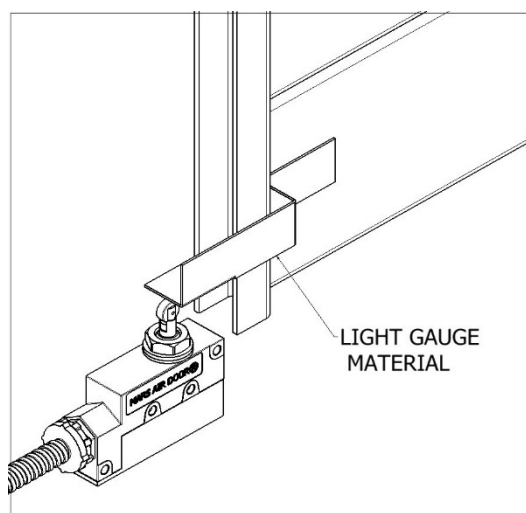


FIG. 2

3. All wiring must be per local and NEC (National Electric Code) codes.
4. Panels or controllers may be required. Refer to wiring diagram inside the control panel box.

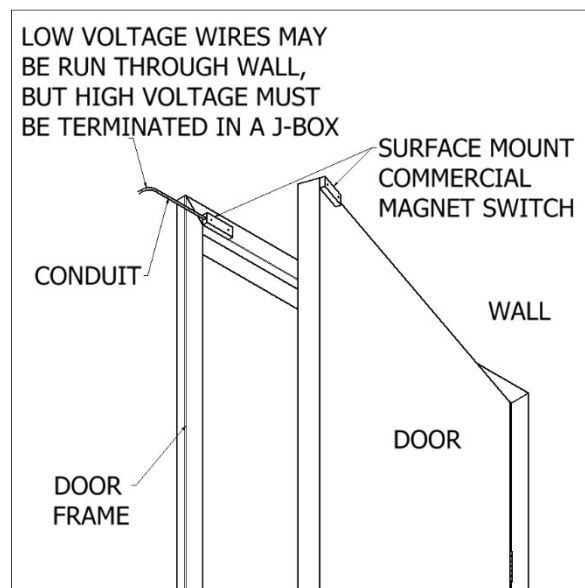


FIG. 3

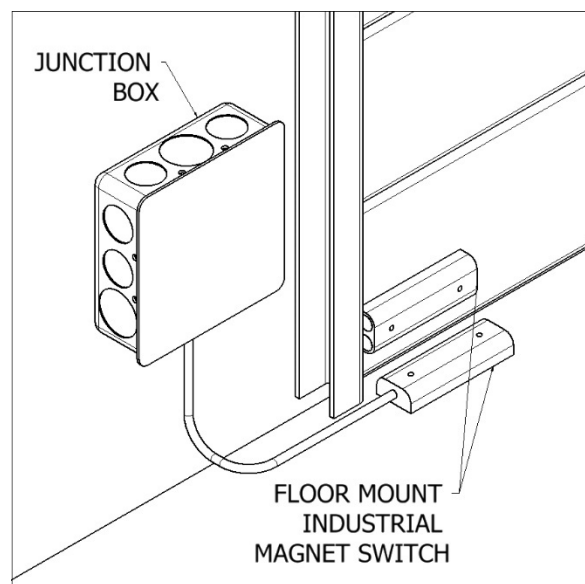


FIG. 4

atmosphere is everything

Bracket Installation

1. Side Extension Plates: For doorways wider than the air curtain, use combination of Side Extension Plates and Adjustable Mounting Brackets. (FIG. 5)



FIG. 5 (LPV SHOWN)

2. Adjustable Mounting Brackets: For installation of air curtain over drum-style roll-up door, use Extended Wall Mounting Brackets. (FIG. 6)

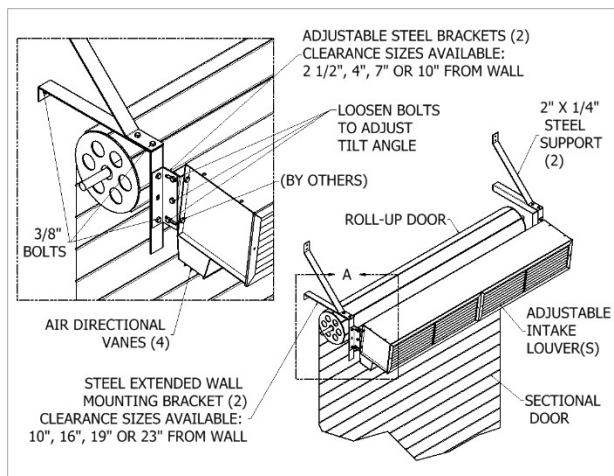


FIG. 6 (STD SHOWN)



FIG. 7 (WMI/WMH SHOWN)

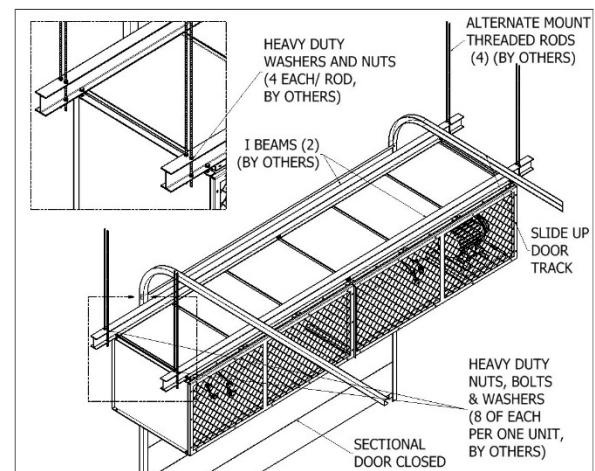


FIG. 8 (BD SHOWN)

3. Extended Wall Mounting: For Tandem Mounting of air curtain over sectional style door, use either wall mounting angle brackets or threaded rods.
4. Top Mounting Brackets: For overhead installation of units, use in conjunction with the threaded holes provided on top of unit.

Note: Angle brackets, threaded rods and I Beams are provided by others. (FIGS. 7 & 8) All optional brackets are not available for WMI/WMH and BD Series.



atmosphere is everything

Document No: BD-IOM
Date: 08/26/24

WINDGUARD BELT DRIVE (BD) INDUSTRIAL SERIES

Installation, Operation and Maintenance Manual

Read these instructions carefully before assembling, installing, operating, or maintaining the product. Follow all safety guidelines to avoid injury or damage. Keep these instructions for future reference.

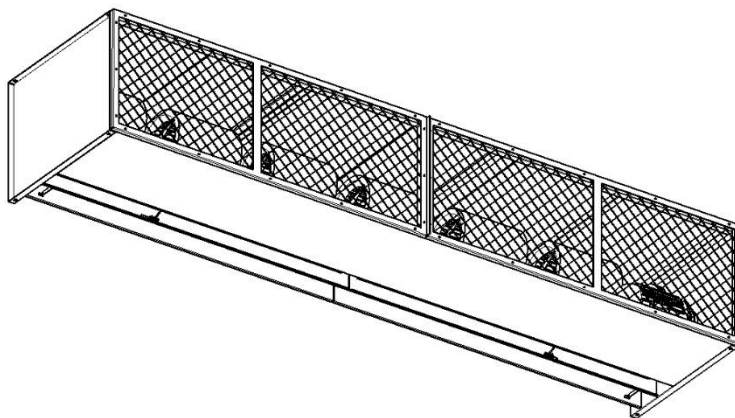
Warning: To reduce the risk of fire, electric shock, or injury to persons, do not use replacement parts that have not been recommended by the manufacturer.

OVERVIEW

Mars Air Curtains are designed to cover door openings, providing both temperature control/environmental separation and flying insect control when the building's doors are opened. Typical installation heights are:
BD14 Series

(Environmental Separation up 16' and Flying Insect Control 14'), BD18 Series (Environmental Separation up 20' and Flying Insect Control 18'), BD22 Series (Environmental Separation up 24' and Flying Insect Control 22'), BD26 Series (Environmental Separation up 28' and Flying Insect Control 26') and BD30 Series (Environmental Separation up 32' and Flying Insect Control 30'). The units are typically overhead mounted horizontally above the door opening. They can also be vertically mounted alongside the opening. Heated units must be mounted on the inside or the protected side of the opening. The motors used in the BD Series range from 5 HP to 30 HP (see submittals for details).

All BD Series come standard with expanded metal air intake grille(s). The BD Series can also be optionally configured with Flat Bank or V-Bank air filter sections.



GENERAL SAFETY INFORMATION

Use this product only in the manner intended by the manufacturer. If you have any questions, contact the manufacturer. Only qualified personnel should install this product. Installing personnel should have a clear understanding of these instructions

and should be aware of general safety precautions. Improper installation can result in electric shock, possible injury due to coming in contact with moving parts, as well as other potential hazards.



WARNING

To reduce the risk of fire, electric shock, or injury to persons, observe the following.

- Always disconnect, lock and tag power source before installing or servicing product.
- Installation work or electrical wiring must be done by qualified person(s) in accordance with all applicable codes and standards, including fire-rated construction.
- The combustion airflow needed for safe operation of fuel burning equipment in the area may be affected by the product's operation. Follow the heating equipment manufacturer's guideline and safety standards, such as those published by the National Fire Protection Agency (NFPA), the American Society of Heating, Refrigeration and Air Conditioning Engineers (ASHRAE) and local code authorities.
- When cutting or drilling into a wall or ceiling, be careful not to damage electrical wiring and other hidden utilities.



WARNING

When servicing the product, motor may be hot enough to cause pain or injury. Allow motor to cool before servicing.



WARNING

Precaution should be taken in explosive atmospheres.

RECEIVING AND INSPECTION

Upon receiving the product, check to ensure all items (including accessories, e.g. switches) are accounted for by referencing the Bill of Lading to ensure all items were received. Inspect each carton for shipping damage before accepting delivery. Notify the freight carrier if any damage is noticed. The carrier will make notification on the delivery receipt acknowledging any damage to the product. All damage should be noted on all copies of the Bill of Lading which is countersigned by the delivering carrier. A Carrier Inspection Report should be filled out by the carrier upon arrival and a report given to the Traffic Department. If damaged upon arrival, file a claim immediately with the carrier. Any physical damage to the unit after acceptance is not the responsibility of Mars Air Systems.

UNPACKING

Verify that all parts, components and accessories, and the correct quantities of each have been received. If any items are missing, report shortages to Mars Air Systems directly to arrange for obtaining the missing items. Again, verify quantities received against those on the Bill of Lading only, as multiple shipments may be involved.

INSTALLATION

Typical Mounting – Wall or Ceiling Mounted Horizontally Above the Door Opening

1. Overhead installation is recommended to prevent the possibility of the unit falling if the wall to which the unit is mounted is hit by a truck or material handling device. If, however, wall or bracket mounting is preferred, additional holes may be drilled in the rear flanges of the housing side panels.

Note: Bracket/Support mounting is not generally recommended for Air Curtains equipped with steam or hot water coils. Overhead installation using threaded rods with independent suspension of coils is recommended.

2. Center the unit over the opening. The air curtain shall be equal to or greater than the width of the opening.
3. Four (4) sets of pre-punched 1/2" mounting holes, two (2) on each end the unit, are provided to secure the product overhead. All hardware is field provided by others.

Mount the product such that the discharge is 1" above the opening and all obstacles (FIG. 4).

Note: If the product is installed higher than the recommended 1" above the opening, then it must be moved 3/8" away from the wall for every 1" that it is moved up. Any void between the wall and the product must be sealed (by others) to optimize performance.

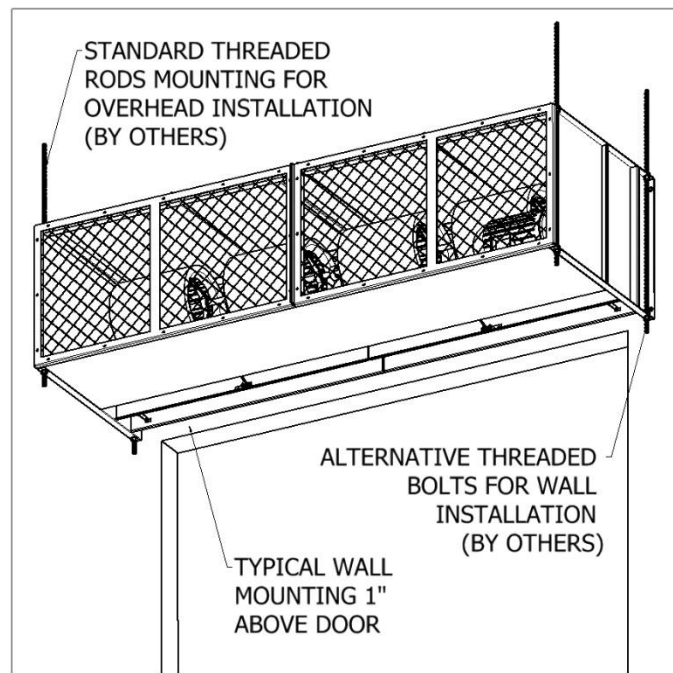


FIG. 1

4. Use four (4) threaded rods for overhead installation or four (4) threaded bolts for wall installation. All hardware is field provided by others. (FIG. 1)
5. For tandem installation of products mounted side by side, allow no more than 6" between the two products. For overhead installation using threaded rods, the products may require a beam or strut channel (by others) to span the full distance of the mounting length. (Reference **Accessory Installation Supplement**)
6. All wires must be connected to the external junction box on the side of the unit (default is right side).
7. The unit must be wired per NEC and local codes.

Electrical Field Wiring

The unit and any optional accessories must be wired with the proper voltage to the junction box per the wiring diagram. (FIG. 2, unheated products only)

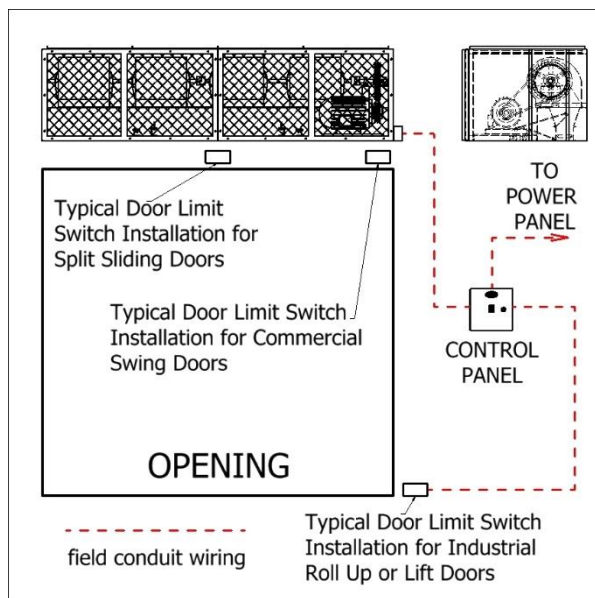


FIG. 2

NOTE

For accessory installation, reference **Accessory Installation Supplement**.

For heated products, reference **Heated Products Supplement**.

START-UP

This product has been assembled and tested at the factory prior to shipping. The following procedures should be performed to assure its performance. Before continuing with the start-up, it is important to recognize the safety controls furnished with the unit.



WARNING

Prevent hazard of electrical shock. More than one disconnect switch may be required to de-energize this product.



WARNING

The following items must all be completed by a qualified installer and checked off when completed

- Re-check that the product has been installed properly and is level and secure.
- Check all terminal screws are tight and field wiring is connected in accordance to National Electrical Code and wired per the enclosed wiring diagram. For electric heated models, ensure that the coils are secured and not touching each other on any metal surface.
- Verify proper voltage prior to powering the product. (See product label for reference).

- Check all field wired components (if supplied) are wired correctly.
- Check that the inlet air supply and the discharge air supply are free of obstructions.
- Check that all air filter(s) and/or air intake grille(s) are in place and installed properly, as originally shipped.
- Verify voltage to the product once more and turn power on.
- Regardless of whether the product is mounted on the inside or outside of the door opening, set the air directional vanes in the discharge nozzle slightly outward to approximately 10-15° towards the outside, or the wind load. (FIG. 3).

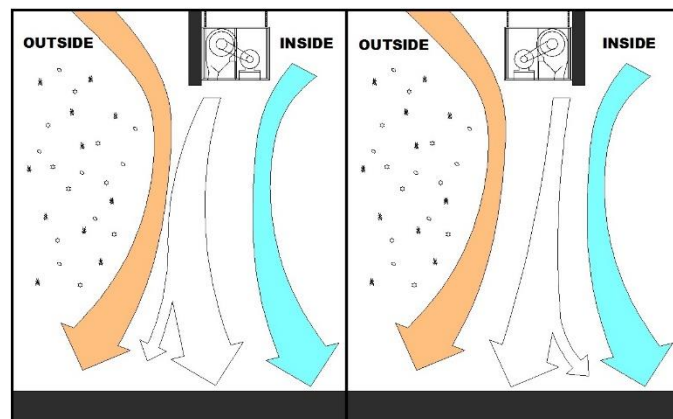


FIG. 3

- For products with control panels, turn the HOA (Hand-On-Auto) selector switch to "On" position and open the door to energize the product. For products without a control panel or an On/Off switch, open the door to energize the product.
- If heated products are installed, reference **Heated Products Supplement**.
- For three phase units, verify direction of rotation of blower wheels (note direction arrows on the blower wheel housing). Correct if needed by changing polarity of three phase power.
- VERY IMPORTANT** Using a clamp meter, measure the amperage to each motor and ensure that they do not exceed the amperage listed on the product label.
- If applicable, adjust the air intake grille(s) such that the output air stream reaches the floor. For temperature control and environmental separation applications, the air stream should reach the floor with sufficient strength to create an air seal around the door opening without creating turbulent mixing of the inside and outside air. For flying insect control applications, the air stream should reach the floor with maximum strength. If after proper installation and adjustment, the product appears to be producing too little or too much air for the application, contact the manufacturer.

MAINTENANCE



WARNING

To reduce the risk of fire, electrical shock or injury to persons, observe the following:

- A. Maintenance is to be performed only by qualified personnel who are familiar with local codes and regulations and are experienced with this type of product.
- B. Before servicing or cleaning the product switch power off at service panel and lock service panel to prevent power from being switched "ON" accidentally.

Routine maintenance is required to keep this product operating at its peak performance and efficiency. Over time, the housing, air intake grille, air intake filter, blower wheels and motor(s) will accumulate a buildup of dust, debris and other residue. It is imperative to keep these components clean. Failure to do so will not only lower operational efficiency and performance, but also reduce the useful life of the product. The time between cleanings depends on the application, location, and daily hours of use. On average, under normal usage conditions, the product should require a thorough cleaning once every six (6) months.

To clean the product, perform the following:

1. Verify the product has been disconnected from the power source.
2. Use a damp cloth and either a warm mild soapy water solution or bio-degradable degreaser, to wipe down the exterior components of the housing.
3. To access the interior of the product, remove the air intake grille(s) and/or air intake filter(s). This is accomplished by removing the screws on the face of the air intake grille(s)/filter(s) or top access panels.
4. Thoroughly clean the air intake grille(s)/filter(s) or top access panels.
5. Thoroughly wipe down the motor, blower wheels and blower wheel housings. Be careful not to spray the motor with a water hose.
6. The motor(s) may require additional lubrication. The cartridge bearings for blowers are permanently lubricated double sealed ball bearings and do not require additional lubrication. The pillow block bearings require periodic greasing depending on use. Zerk fittings are provided on each bearing.
7. To re-install the product, reverse the procedures above.
8. Reconnect the power source to the product.
9. If you have any questions regarding the maintenance of the product, contact the manufacturer.

SPECIAL APPLICATIONS

Outdoor Installation

For units being installed outdoors, special consideration may be required for enclosure, motor, wheel, and other components to minimize damage caused by exposure to the outdoor elements. Contact factory for special construction and costing.

Freezer and Cooler Installation

Air curtain must be mounted on the warm side for optimal performance. Variable Frequency Drive (VFD) is strongly recommended to control the air curtain air flow velocity at the floor level.

Freezer applications in high humidity areas may require a de-humidifier, or an additional defrost cycle, to minimize condensation and icing. We recommend the air curtain unit not to replace physical doors, but to work in conjunction with the door opening sequence cycle. Contact factory for details.

DISCLAIMER


Mars reserves the right to change specifications and product design without notice. Such revisions do not entitle the buyer to corresponding changes, improvements, additions, or replacements for previously purchased equipment.

TROUBLESHOOTING

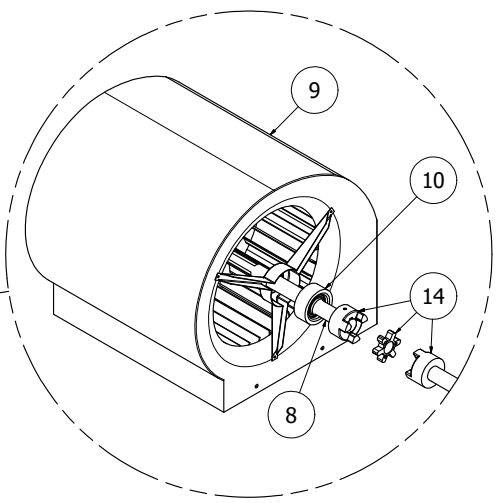
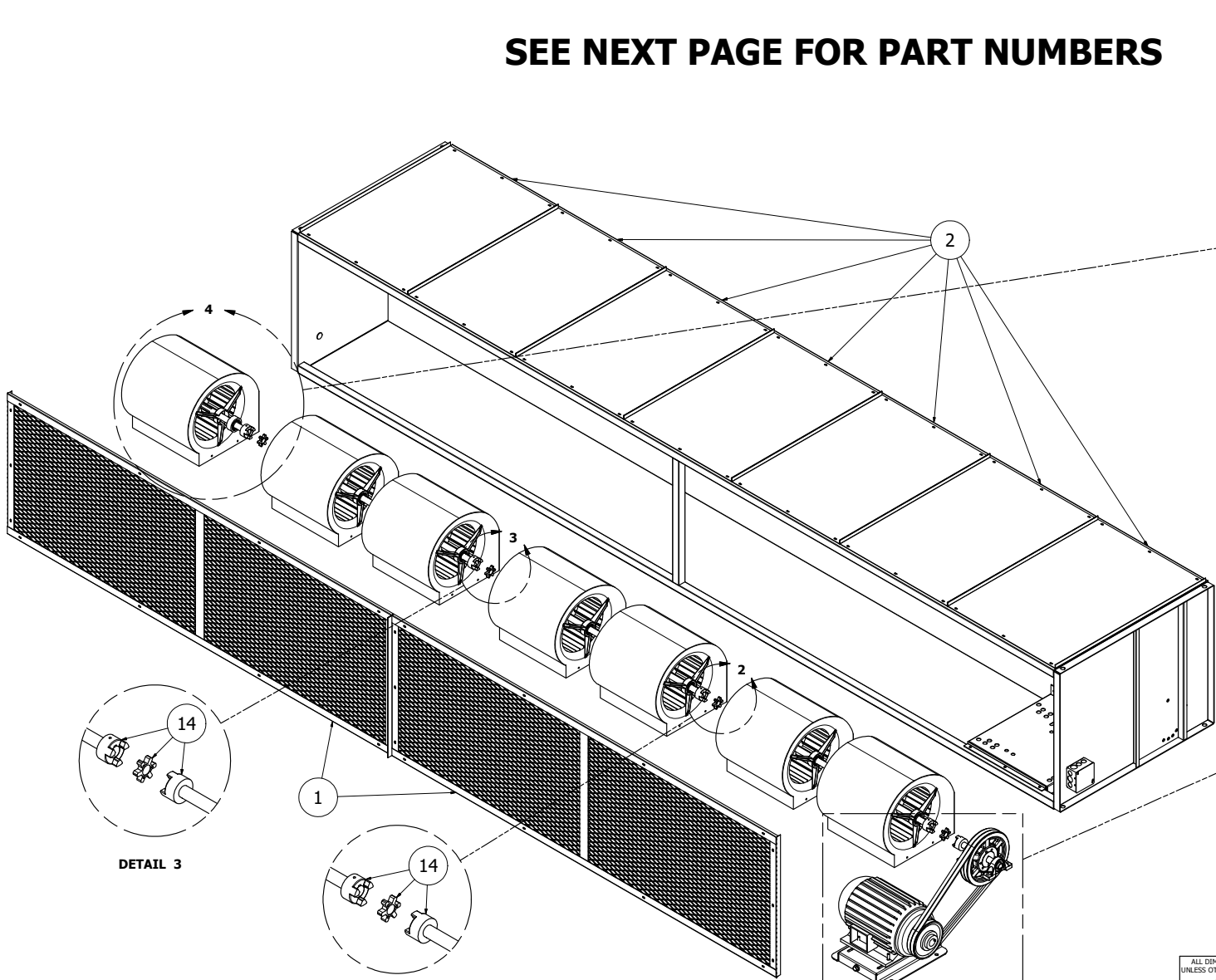
| PROBLEM | CAUSE | SOLUTION |
|---|---|--|
| NO AIR BLOWING OUT OF DISCHARGE NOZZLE | <ul style="list-style-type: none"> - No power being supplied to the unit from the electrical power source - Circuit breaker is tripped - Blown fuses on power supply - Motor overload is open or tripped - Motor contactor / relay defective (if applicable) - Failed switch | <ul style="list-style-type: none"> - Confirm power source / check if in on position - Reset circuit breaker - Replace fuses - Allow the motor to cool down; motor has auto reset internal overload; if unit is panel equipped, press reset button on overload inside panel, or replace motor overload if overload remains tripped - Check voltage to coil; check contacts to see if they are pulling in - Replace or repair limit switch |
| MOTOR IS RUNNING BUT FANS ARE NOT SPINNING | <ul style="list-style-type: none"> - Loose or broken coupling (belt drive) - Loose set screws on wheel hubs - Fan spinning inside fan housing - Broken fan hub | <ul style="list-style-type: none"> - Replace or tighten coupling - Tighten set screws on motor shaft flats - Tighten fan on shaft or replace fan - Replace fan wheels |
| ELECTRICAL CONTROLS NOT WORKING WHEN DOOR IS OPEN | <ul style="list-style-type: none"> - Switch is in off position - Door limit switch is not operating | <ul style="list-style-type: none"> - Turn unit's switch to the on position - Repair or replace door limit switch |
| UNIT WILL NOT TURN OFF | <ul style="list-style-type: none"> - Door limit switch is permanently closed or energized | <ul style="list-style-type: none"> - Position the door switch in a manner that turns off the unit when the door closes and turns on the unit when the door opens. Only light pressure required. |
| LOW AIR FLOW | <ul style="list-style-type: none"> - Discharge air vanes out of adjustment - Obstruction on intake or discharge - Power leads out of polarity - Blower motor rotating below normal speed - Fan rubbing against housing - Blower wheels clogged with dirt | <ul style="list-style-type: none"> - Adjust vanes to proper position (Refer to Start-Up Section in this manual) - Remove obstruction or move air curtain - Switch power leads to correct polarity (3 phase models only) - Apply proper voltage per unit requirement (see unit label) / Adjust adjustable motor speed knob (if applicable) - Free fan from housing - Clean and remove dirt from blower wheels |
| EXCESSIVE AIR VELOCITY AT DOOR OPENING | <ul style="list-style-type: none"> - Nozzle out of adjustment and not angled far out enough (BD only) - Air temperature too cold - Air stream pushing air outside of the building | <ul style="list-style-type: none"> - Adjust nozzle angle to outside - Add auxiliary heat to overcome wind chill - Adjust discharge angle back into building |
| AIR NOT HITTING THE FLOOR | <ul style="list-style-type: none"> - Low air velocity - Obstruction in the direction of air flow - Negative building pressure | <ul style="list-style-type: none"> - Adjust vanes to proper position or check installation height (Refer to Start-Up Section in this manual) - Remove obstruction or move air curtain (Move out 3/8" for every 1" up from the door) - Provide a make-up air system to relieve negative building pressure |
| UNEVEN AIR | <ul style="list-style-type: none"> - Shaft rotating inside fan - One motor not functioning | <ul style="list-style-type: none"> - Replace fan or tighten fan on shaft - Replace or repair motor |
| EXCESSIVE NOISE AND OR VIBRATION | <ul style="list-style-type: none"> - Loose or broken coupling (belt drive) - Loose set screws on wheel hubs - Fan spinning inside fan housing - Broken fan hub - Bearing end caps worn - Damaged blower wheel - Bearing end caps worn - Pillow block bearings make noise - Balancing clips missing | <ul style="list-style-type: none"> - Replace or tighten coupling - Tighten set screws on motor shaft flats - Tighten fan on shaft or replace fan - Replace fan wheels - Replace Bearing end caps - Replace Blower Wheel - Replace Bearing end caps - Grease Bearing - Replace Blower Wheel |

TROUBLESHOOTING MOTOR

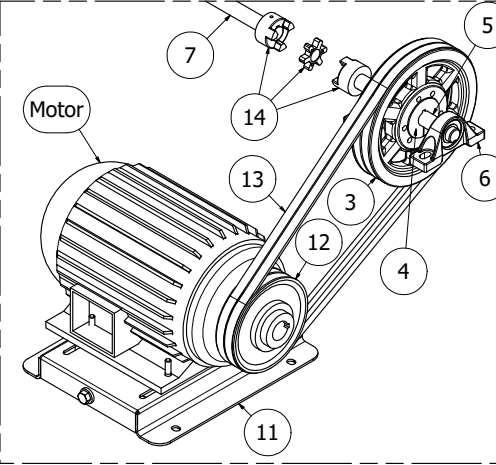
To determine if the motor is in good operating condition, compare measured motor resistance at the motor terminals to the values shown below.

| MARS MOTOR RESISTANCE READINGS | | | | | | | | | | | | |
|---|---------------|---------------------|----------|-----------------|-------|---------|-------|------------------|---|---|---|---|
| Single Phase Motors | | | | | | | | | | | | |
| <div> atmosphere is everything</div> | | | | | | | | | | MOTOR WIRES OR TERMINAL (T) OHM READINGS | | |
| | | | | | | | | | | High Speed (1750) | Medium Speed (1650) | Low Speed (1450) |
| Applicable Air Curtain Series | Mars Part # | Manufacturer Part # | Brand | Motor Rating | HP | Voltage | Phase | Capacitor Rating | Motor Frame | Black Motor Wire & White Motor Wire | - | - |
| LPV2, LPN2 | 03-001 | 7190-1682 | Fasco | Nema 1 | 1/6 | 115 | 1 | 5 µF 370Vac | - | 11.5 | - | - |
| | 03-002 | 7190-1903 | Fasco | Nema 1 | 1/6 | 115 | 1 | 5 µF 370Vac | - | 8.4 | - | - |
| | 03-003 | 7190-1825 | Fasco | Nema 1 | 1/6 | 230 | 1 | 4 µF 440Vac | - | 64 | - | - |
| | 03-004 | 7190-1904 | Fasco | Nema 1 | 1/6 | 230 | 1 | 6 µF 370Vac | - | 44.6 | - | - |
| | 03-124 | 7190-3307 | Fasco | Nema 1 | 1/6 | 115/230 | 1 | 10 µF 370Vac | - | 8.2/36 | - | - |
| | 03-124 | K33NVDHJ-1446 | US | Nema 1 | 1/6 | 115/230 | 1 | 10 µF 370Vac | - | 8.1/32 | - | - |
| Applicable Air Curtain Series | Mars Part # | Manufacturer Part # | Brand | Motor Rating | HP | Voltage | Phase | Capacitor Rating | Motor Frame | White Motor Wire (T1) & Black Motor Wire (T3) | White Motor Wire (T1) & Black Motor Wire (T5) | White Motor Wire (T1) & Black Motor Wire (T2) |
| STD2, N2, PH10, QP10 | 03-010 | 34G928X169 | Baldor | Washdown (IP54) | 1/2 | 115 | 1 | - | 56Z | 1.2 | - | - |
| | 03-010 | 34G928X169 | Baldor | Washdown (IP54) | 1/2 | 208/230 | 1 | - | 56Z | 4.6 | - | - |
| | 03-005 | 7124-1175 | Genteq | Nema 1 | 1/2 | 115 | 1 | 7.5 µF 370Vac | 48 | 2.6 | 3.8 | 5.2 |
| | 03-006 | 7124-1560 | Genteq | Nema 1 | 1/2 | 208/230 | 1 | 10 µF 370Vac | 48 | 9.9 | 15.9 | 22.5 |
| | 03-007 | 48S17T439 | Marathon | Nema 1 | 1/2 | 277 | 1 | - | 48Z | 7.7 | - | - |
| | 03-005 | K055PWM1736C13H | Nidec | Nema 1 | 1/2 | 115 | 1 | 10 µF 370Vac | 48Y | 2.1 | 3.7 | 5.2 |
| | 03-005 | K055PWM1736C13H | US | Nema 1 | 1/2 | 115 | 1 | 10 µF 370Vac | 48Y | 5.3 | 3.7 | 5.4 |
| | 03-006 | K55HXPNA-2845 | US | Nema 1 | 1/2 | 208/230 | 1 | 10 µF 370Vac | 48Y | 8.7 | 18.2 | 24.2 |
| Applicable Air Curtain Series | Mars Part # | Manufacturer Part # | Brand | Motor Rating | HP | Voltage | Phase | Capacitor Rating | Motor Frame | White Motor Wire (T1) & Black Motor Wire (T2) | White Motor Wire (T1) & Black Motor Wire (T3) | - |
| HV2, NH2, PH12 | 03-021 | 35T276R025G1 | Baldor | Washdown (IP54) | 1 | 115 | 1 | - | 56Z | 0.7 | - | - |
| | 03-015-Baldor | 35M316S174 | Baldor | Nema 1 | 1 | 115 | 1 | - | 56Z | 0.6 | - | - |
| | 03-015-Baldor | 35M316S174 | Baldor | Nema 1 | 1 | 208/230 | 1 | - | 56Z | 2.2 | - | - |
| | 03-021 | 35T276R025G1 | Baldor | Washdown (IP54) | 1 | 208/230 | 1 | - | 56Z | 2.8 | - | - |
| | 03-014 | 7124-0985 | Genteq | Nema 1 | 1 | 115 | 1 | 50 µF 370Vac | 56 | 1.6 | 2.4 | - |
| | 03-015 | 7124-1096 | Genteq | Nema 1 | 1 | 208/230 | 1 | 30 µF 370Vac | 56 | 6.5 | 9.2 | - |
| | 03-015 | - | Nidec | Nema 1 | 1 | 208/230 | 1 | 20 µF 370Vac | 48Y | 4.3 | 6.5 | - |
| | 03-014 | K55BWJZB-2362 | US | Nema 1 | 1 | 115 | 1 | 20 µF 370Vac | 48Y | 1 | 2.1 | - |
| | 03-015 | - | US | Nema 1 | 1 | 208/230 | 1 | 20 µF 370Vac | 48Y | 3.2 | 6.3 | - |
| Three Phase Motors | | | | | | | | | | | | |
| Applicable Air Curtain Series | Mars Part # | Manufacturer Part # | Brand | Motor Rating | HP | Voltage | Phase | Motor Frame | LEAD WIRE OHM READINGS | | | |
| | | | | | | | | | Black Motor Wire (L1) & Red Motor Wire (L2) | Black Motor Wire (L1) & White Motor Wire (L3) | Red Motor Wire (L2) & White Motor Wire (L3) | |
| STD2, N2, PH10, QP10 | 03-008 | P55YDHB-1527 | US | Nema 1 | 1/2 | 208-230 | 3 | 48 | 16.1 | 16.1 | 16.1 | |
| | 03-008 | P55YDHB-1527 | US | Nema 1 | 1/2 | 460 | 3 | 48 | 63.6 | 63.6 | 63.6 | |
| | 03-009 | 48T17T135 | Marathon | Nema 1 | 1/2 | 575 | 3 | 48 | 136 | 136 | 136 | |
| HV2, NH2, PH12 | 03-017 | 56T17T5541 | Marathon | Nema 1 | 1 | 208-230 | 3 | 56Z | 4.3 | 4.3 | 4.3 | |
| | 03-017 | 56T17T5541 | Marathon | Nema 1 | 1 | 460 | 3 | 56Z | 16.5 | 16.5 | 16.5 | |
| | 03-018 | 56T17T5544 | Marathon | Nema 1 | 1 | 575 | 3 | 56Z | 26.6 | 26.6 | 26.6 | |
| | 03-022 | 35N127S902 | Baldor | Washdown (IP54) | 1 | 208-230 | 3 | 56Z | 5.1 | 5.1 | 5.1 | |
| | 03-022 | 35N127S902 | Baldor | Washdown (IP54) | 1 | 460 | 3 | 56Z | 19.8 | 19.8 | 19.8 | |
| EP2 | 03-026 | 165716 | Century | Nema 1 | 3 | 208-230 | 3 | U56Y | 1.5 | 1.5 | 1.5 | |
| | 03-026 | 165716 | Century | Nema 1 | 3 | 460 | 3 | U56Y | 5.7 | 5.7 | 5.7 | |
| | 03-026 | P63TYFMJ-1687 | US | Nema 1 | 3 | 208-230 | 3 | 56HZ | 1.2 | 1.2 | 1.2 | |
| | 03-026 | P63TYFMJ-1687 | US | Nema 1 | 3 | 460 | 3 | 56HZ | 4.4 | 4.4 | 4.4 | |
| | 03-028 | 35E92Y26 | Baldor | Nema 1 | 3 | 575 | 3 | 56Z | 9.2 | 9.2 | 9.2 | |
| WMI | 03-110 | 36H110-2211G1 | Baldor | Nema 1 | 1,2,3 | 208-230 | 3 | 184Z | 3.5 | 3.5 | 3.5 | |
| | 03-110 | 36H110-2211G1 | Baldor | Nema 1 | 1,2,3 | 460 | 3 | 184Z | 13.5 | 13.5 | 13.5 | |
| WMH | 03-055 | 37F932W828G1 | Baldor | Nema 1 | 5 | 230 | 3 | 215YZ | 0.7 | 0.7 | 0.7 | |
| | 03-055 | 37F932W828G1 | Baldor | Nema 1 | 5 | 460 | 3 | 215YZ | 2.4 | 2.4 | 2.4 | |
| | 03-046 | 37F909X889G1 | Baldor | Nema 1 | 7 | 230 | 3 | 215YZ | 0.6 | 0.6 | 0.6 | |
| | 03-046 | 37F909X889G1 | Baldor | Nema 1 | 7 | 460 | 3 | 215YZ | 1.6 | 1.6 | 1.6 | |
| BD | 03-033 | U639A - 215TTF6027 | Marathon | Nema 1 | 10 | 208-230 | 3 | 215T | 0.4 | 0.4 | 0.4 | |
| | 03-033 | U639A - 215TTF6027 | Marathon | Nema 1 | 10 | 460 | 3 | 215T | 1.2 | 1.2 | 1.2 | |
| | 03-074 | GT1128A 170118.60 | Marathon | Nema 1 | 25 | 575 | 3 | 284TS | 0.5 | 0.5 | 0.5 | |

SEE NEXT PAGE FOR PART NUMBERS



DETAIL 4



DETAIL 1

| |
|---|
| ALL DIMENSIONS INCHES UNLESS OTHERWISE SPECIFIED |
| X ±0.1 |
| .XX ±0.05 |
| .XXX ±0.030 |
| HOLE ±0.003 |
| ANGULAR ±1° |

| | |
|----------|----------|
| DRAWN | 7/3/2024 |
| CHECKED | |
| QA | |
| MFG | |
| APPROVED | |
| MATERIAL | |

| | |
|--------------|----------------------|
| mars | |
| TITLE | |
| SIZE | DWG NO |
| D | BD Replacement Parts |
| SCALE | 1/8.5 |
| SHEET 1 OF 2 | |

| Table 1: All BD Series | | | | | | | | | | | | | | | | | | | | |
|------------------------|---------------------------|-----|-----------------------|-----|-----------------------|-----|-----------------|-----|---------------------|-----|------------------------------|-----|---------------------------|-----|---------------------------|-----|---------------------------|-----|----------------------------|-----|
| Air Curtain Model # | Item 1: Intake Screen Set | | Item 2: Top Panel Set | | Item 3: Driven Pulley | | Item 4: Bushing | | Item 5: Drive Shaft | | Item 6: Pillow Block Bearing | | Item 7: Driven Shaft, 46" | | Item 8: Driven Shaft, 23" | | Item 9: Blower Wheel Assy | | Item 10: Cartridge Bearing | |
| | Part # | Qty | Part # | Qty | Part # | Qty | Part # | Qty | Part # | Qty | Part # | Qty | Part # | Qty | Part # | Qty | Part # | Qty | Part # | Qty |
| BD**96-1U*-TS | 02-030- | 1 | 11-002- | 1 | 08-003 | 1 | 13-027 | 1 | 08-090 | 1 | 08-108 | 2 | 08-170 | 2 | - | - | 04-016 | 4 | 08-107 | 8 |
| BD**120-1U*-TS | 02-031- | 1 | 11-003- | 1 | 08-003 | 1 | 13-027 | 1 | 08-090 | 1 | 08-108 | 2 | 08-170 | 2 | 08-171 | 1 | 04-016 | 5 | 08-107 | 10 |
| BD**144-1U*-TS | 02-032- | 1 | 11-004- | 1 | 08-003 | 1 | 13-027 | 1 | 08-090 | 1 | 08-108 | 2 | 08-170 | 3 | - | - | 04-016 | 6 | 08-107 | 12 |
| BD**168-1U*-TS | 02-033- | 1 | 11-005- | 1 | 08-003 | 1 | 13-027 | 1 | 08-090 | 1 | 08-108 | 2 | 08-170 | 3 | 08-171 | 1 | 04-016 | 7 | 08-107 | 14 |
| BD**192-1U*-TS | 02-034- | 1 | 11-006- | 1 | 08-003 | 1 | 13-027 | 1 | 08-090 | 1 | 08-108 | 2 | 08-170 | 4 | - | - | 04-016 | 8 | 08-107 | 16 |

| Table 2: Specific to BD Series | | | | | | | | |
|--------------------------------|---------------------------|-----|-----------------------|-----|-----------------|-----|---------------------------------|-----|
| Air Curtain Model # | Item 11: Motor Slide Base | | Item 12: Drive Pulley | | Item 13: V-Belt | | Item 14: Coupling Set, Complete | |
| | Part # | Qty | Part # | Qty | Part # | Qty | Part # | Qty |
| BD1496-1U*-TS | 03-031SB | 1 | 08-014 | 1 | 08-076 | 2 | 77-08-500ASY | 1 |
| BD14120-1U*-TS | 03-031SB | 1 | 08-014 | 1 | 08-075 | 2 | 77-08-501ASY | 1 |
| BD14144-1U*-TS | 03-032SB | 1 | 08-200 | 1 | 08-078 | 2 | 77-08-502ASY | 1 |
| BD14168-1U*-TS | 03-032SB | 1 | 08-200 | 1 | 08-078 | 2 | 77-08-503ASY | 1 |
| BD14192-1U*-TS | 03-033SB | 1 | 08-200 | 1 | 08-078 | 2 | 77-08-504ASY | 1 |
| BD1896-1U*-TS | 03-032SB | 1 | 08-200 | 1 | 08-076 | 2 | 77-08-510ASY | 1 |
| BD18120-1U*-TS | 03-032SB | 1 | 08-200 | 1 | 08-076 | 2 | 77-08-511ASY | 1 |
| BD18144-1U*-TS | 03-033SB | 1 | 08-200 | 1 | 08-074 | 2 | 77-08-512ASY | 1 |
| BD18168-1U*-TS | 03-033SB | 1 | 08-200 | 1 | 08-074 | 2 | 77-08-513ASY | 1 |
| BD18192-1U*-TS | 03-034SB | 1 | 08-018 | 1 | 08-165 | 2 | 77-08-514ASY | 1 |
| BD2296-1U*-TS | 03-033SB | 1 | 08-204 | 1 | 08-076 | 2 | 77-08-520ASY | 1 |
| BD22120-1U*-TS | 03-034SB | 1 | 08-019 | 1 | 08-074 | 2 | 77-08-521ASY | 1 |
| BD22144-1U*-TS | 03-034SB | 1 | 08-018 | 1 | 08-074 | 2 | 77-08-522ASY | 1 |
| BD22168-1U*-TS | 03-035SB | 1 | 08-018 | 1 | 08-074 | 2 | 77-08-523ASY | 1 |
| BD22192-1U*-TS | 03-035SB | 1 | 08-019 | 1 | 08-074 | 2 | 77-08-524ASY | 1 |
| BD2696-1U*-TS | 03-034SB | 1 | 08-019 | 1 | 08-075 | 2 | 77-08-530ASY | 1 |
| BD26120-1U*-TS | 03-035SB | 1 | 08-018 | 1 | 08-075 | 2 | 77-08-531ASY | 1 |
| BD26144-1U*-TS | 03-036SB | 1 | 08-201 | 1 | 08-075 | 2 | 77-08-532ASY | 1 |
| BD26168-1U*-TS | 03-036SB | 1 | 08-201 | 1 | 08-075 | 2 | 77-08-533ASY | 1 |
| BD26192-1U*-TS | 03-037SB | 1 | 08-201 | 1 | 08-075 | 2 | 77-08-534ASY | 1 |
| BD3096-1U*-TS | 03-035SB | 1 | 08-019 | 1 | 08-075 | 2 | 77-08-540ASY | 1 |
| BD30120-1U*-TS | 03-036SB | 1 | 08-201 | 1 | 08-075 | 2 | 77-08-541ASY | 1 |
| BD30144-1U*-TS | 03-037SB | 1 | 08-201 | 1 | 08-075 | 2 | 77-08-542ASY | 1 |
| BD30168-1U*-TS | 03-037SB | 1 | 08-201 | 1 | 08-075 | 2 | 77-08-543ASY | 1 |
| BD30192-2U*-TS | 03-035SB | 2 | 08-019 | 2 | 08-075 | 4 | 77-08-544ASY | 2 |

| Table 3: Motor (Voltage Code) | | | | |
|-------------------------------|-----------------|-------------|-------------|-----|
| Air Curtain Model # | 208-230V/3Ø (G) | 460V/3Ø (H) | 575V/3Ø (I) | Qty |
| | Part # | Part # | Part # | |
| BD1496-1U*-TS | 03-031 | 03-031 | 03-198 | 1 |
| BD14120-1U*-TS | 03-031 | 03-031 | 03-198 | 1 |
| BD14144-1U*-TS | 03-032 | 03-032 | 03-070 | 1 |
| BD14168-1U*-TS | 03-032 | 03-032 | 03-070 | 1 |
| BD14192-1U*-TS | 03-033 | 03-033 | 03-071 | 1 |
| BD1896-1U*-TS | 03-032 | 03-032 | 03-070 | 1 |
| BD18120-1U*-TS | 03-032 | 03-032 | 03-070 | 1 |
| BD18144-1U*-TS | 03-033 | 03-033 | 03-071 | 1 |
| BD18168-1U*-TS | 03-033 | 03-033 | 03-071 | 1 |
| BD18192-1U*-TS | 03-034 | 03-034 | 03-072 | 1 |
| BD2296-1U*-TS | 03-033 | 03-033 | 03-071 | 1 |
| BD22120-1U*-TS | 03-034 | 03-034 | 03-072 | 1 |
| BD22144-1U*-TS | 03-034 | 03-034 | 03-072 | 1 |
| BD22168-1U*-TS | 03-035 | 03-035 | 03-073 | 1 |
| BD22192-1U*-TS | 03-035 | 03-035 | 03-073 | 1 |
| BD2696-1U*-TS | 03-034 | 03-034 | 03-072 | 1 |
| BD26120-1U*-TS | 03-035 | 03-035 | 03-073 | 1 |
| BD26144-1U*-TS | 03-036 | 03-036 | 03-074 | 1 |
| BD26168-1U*-TS | 03-036 | 03-036 | 03-074 | 1 |
| BD26192-1U*-TS | 03-037 | 03-037 | 03-075 | 1 |
| BD3096-1U*-TS | 03-035 | 03-035 | 03-073 | 1 |
| BD30120-1U*-TS | 03-036 | 03-036 | 03-074 | 1 |
| BD30144-1U*-TS | 03-037 | 03-037 | 03-075 | 1 |
| BD30168-1U*-TS | 03-037 | 03-037 | 03-075 | 1 |
| BD30192-2U*-TS | 03-035 | 03-035 | 03-073 | 2 |

EXAMPLE

BD14 96 - 1 U H - TS

Series: BD14

LENGTH OF UNIT

OF MOTORS

U = UNHEATED

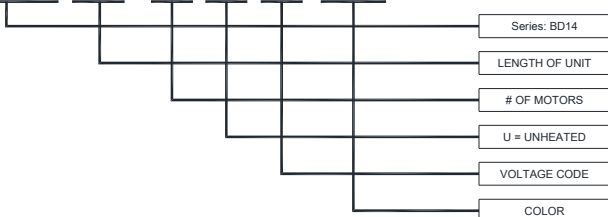
VOLTAGE CODE

COLOR

*Use corresponding letter for "Voltage Code" to complete the model numbers.

EXAMPLE

BD14 96 - 1 U H - TS



*Use corresponding letter for "Voltage Code" to complete the model numbers.

WARRANTY

Mars' warranty coverage, period, extent, and limitations apply to the product only. It does not apply to labor. Mars warrants that the Mars product 1) is free from defects in materials and workmanship, and 2) conforms to Mars' published specifications. The warranty period for Mars products (except for heated models, custom models, or WMI, WMH and BD models) is a five (5) year period commencing on the date of shipment. The warranty for heated models is an eighteen (18) month period, the warranty for custom models and for accessories is a twelve (12) month period, and the warranty for WMI, WMH, and BD models is a twelve (12) month period. The date on the customer's invoice is the date of shipment unless Mars or your reseller informs you and Mars otherwise. Mars will provide free replacement of any part that fails as a result of a defect in material or manufacturer's workmanship. Changes in operational specification parameters that differ from those provided on the original purchase order are not covered. Mars products are inspected and tested before packaging and are shipped in working condition. The warranty for Mars products only covers free-of-charge replacement of failed parts. The warranty does not cover labor and transportation expenses that may be required to deliver and to install replacement parts. Because in many instances it is impossible to determine the cause of failure, the customer may be responsible for transportation charges associated with replacement of failed part. Mars does not warrant uninterrupted or error-free operation of Mars product. Under no circumstance is Mars liable for any of the following: 1) third-party claims against you for damages, 2) special, incidental, or indirect damages, or 3) any economic consequential damages (including lost profits and savings), regardless of whether Mars, its suppliers, or its resellers were informed of the possibility of damages. The warranty does not cover repair or exchange of Mars products resulting from misuse, accidental damage, modification, unsuitable physical or operating environment, improper maintenance or installation by customer, or failure caused by a product for which Mars is not responsible. The warranty does not cover damages caused by mishandling during transportation. The warranty is voided by removal or alteration of Mars product or parts identification labels, and by improper installation of product and resulting non-compliance with federal, state, and local codes and regulations. Additionally, Mars reserves the right to void the warranty for non-payment of invoice.

CONTACT FACTORY FOR COMPLETE PARTS LIST FOR ALL MODELS.

KEEP THIS MANUAL FOR YOUR RECORDS.

Model Number: _____

Serial Number: _____

Date Purchased: _____

Dealer Purchased From: _____



atmosphere is everything

14716 S. Broadway St., Gardena, CA 90248

(310) 532-1555 • (800) 421-1266

Fax: (310) 324-3030

Please go to our website at www.marsair.com for a downloadable version of this document.



atmosphere is everything

SECTION 23 34 33

AIR CURTAINS

Important Note: This specification contains hidden text appearing in red. To show or remove hidden text in MSWord, click the “File” tab or “Office” icon on the top-left corner, select “Options,” select “Display,” and check or uncheck the box marked “Hidden Text.”

PART 1 GENERAL

1.1 SECTION INCLUDES

- A. Air curtains for pedestrian entrances.
- B. Air curtains for vehicular entrances.
- C. Air curtains for large loading dock doors.

1.2 RELATED SECTIONS

- A. Section 05 50 00 – Metal Fabrications: Concealed steel support members.
- B. Section 06 10 00 – Rough Carpentry.
- C. Section 05 41 00 – Structural Metal Studs.
- D. Section 07 62 00 – Sheet metal flashing.
- E. Section 07 92 00 – Joint Sealants.
- F. Section 08 10 00 – Metal Doors and Frames.
- G. Section 08 33 00 – Overhead Coiling Doors.
- H. Section 08 42 00 – Entrance Doors.
- I. Section 22 10 00 – Plumbing Piping:
- J. Section 23 21 00 – Hydronic Piping: Hot water heating piping to units.

- K. Section 23 22 13- Steam and Condensate Piping: Steam heating piping to units.
- L. Section 26 05 00 – Equipment Wiring: Connections to building power distribution.

1.3 REFERENCES

- A. ASTM A240 / A240M -10 – Standard Specification for Chromium and Chromium.
- B. ASTM A591 / A591M -98 – Standard Specification for Steel Sheet, Electrolytic Zinc-Coated, for Light Coating Weight (Mass) Application (Withdrawn in 2005, replaced by A879/A879M).
- C. ASTM A879 / A879M -06 – Standard Specification for Steel Sheet, Zinc Coated by the Electrolytic Process for Application Requiring Designation of the Coating Mass on Each Surface.
- D. ASTM A653 / A653M -09a – Standard Specification for Steel Sheet, Zinc Coated (Galvanized) or Zinc-Iron Alloy-Coated (Galvannealed) by the Hot-Dip Process.
- E. AHRI 410-2001 – Standard for Forced-Circulation Air-cooling and Air-Heating Coils.
- F. CRN – Canadian Registration Number Coil.
- G. ANSI Z223-NFPA 54 – National Fuel Gas Code/
- H. NEC – National Electric Code.
- I. U.S. Green Building Council, LEED Building Design and Construction (BD+C) Version 4.0 Rating System. (LEED v4.0).

1.4 SUBMITTALS

- A. Submit under provisions of Section 01 33 00.
- B. Product Data: Manufacturer's data sheets on each product to be used, including:
 - 1. Preparation instructions and recommendations.
 - 2. Storage and handling requirements and recommendations.
 - 3. Installation methods.
- C. Shop Drawings: Include plans, elevations, sections, and details, indicating dimensions, tolerances, materials, fasteners, hardware, finish, piping, electrical wiring diagrams, options, and accessories.
- D. LEED Submittals: Provide documentation of how the requirements of Credit will be met:
 - 1. List of proposed materials with recycled content. Indicate post-consumer recycled content and pre-consumer recycled content for each product having recycled content.

- 2. Product data and certification letter indicating percentages by weight of post-consumer and pre-consumer recycled content for products having recycled content.
- E. Selection Samples: For each finish product specified, two complete sets of color chips representing manufacturer's full range of available colors and patterns.
- F. Verification Samples: For each finish product specified, two samples, minimum size 6.25 inches (160 mm) square, representing actual product, color, and patterns.
- G. Manufacturer's Certificates: Certify products meet or exceed specified requirements.
- H. Operation and Maintenance Manual: Submit manufacturer's operation and maintenance manual, including operation, maintenance, adjustment, and cleaning instructions, troubleshooting guide, parts list, and electrical wiring diagrams.

1.5 QUALITY ASSURANCE

- A. Manufacturer Qualifications: Minimum ten years documented experience producing the products specified in this Section
- B. Installer Qualifications: Minimum five years documented experience installing products specified in this Section

1.6 DELIVERY, STORAGE, AND HANDLING

- A. Store products in manufacturer's unopened packaging until ready for installation.
- B. Store in a dry, heated storage area until installation of products.
- C. Protect materials and finish from damage during handling and installation.

1.7 SEQUENCING

- A. Ensure that locating templates and other information required for installation of products of this section are furnished to affected trades in time to prevent interruption of construction progress.
- B. Coordinate the installation of wiring and control switches for air curtains with the openings and the hardware provided for such openings.
- C. Install after doors, walls, ceilings, and other adjacent surfaces are finished and painted.

1.8 WARRANTY

- A. Standard one-year limited parts warranty for unheated units against defects in workmanship and material.

- B. Standard one-year limited parts warranty for heated units against defects in workmanship and materials.

PART 2 PRODUCTS

2.1 MANUFACTURER

- A. Acceptable Manufacturer: Mars Air Systems, LLC; 14716 South Broadway St., Gardena, CA 90248. Tel: (310) 532-1555 or (800) 421-1266. Fax: (310) 324-3030. Email: info@marsair.com. Web: www.marsair.com.
- B. Delete one of the following two paragraphs: coordinate with requirements of Division 1 section on product options and substitutions.
- C. Requests for substitutions will be considered in accordance with provisions of Section 01 33 00.

2.2 AIR CURTAIN ASSEMBLIES

- A. Motor Fan Assembly: Design for easy removal, assembly, repair and maintenance.
 - 1. Motor: Totally enclosed fan cooled (TEFC) motor with sealed lifetime pre-lubricated ball bearings.
 - a. Wired for single speed operation.
 - b. Provide wash down type motors, NEC IP-54 for the locations indicated.
 - c. Provide explosion proof type motors, NEC Class 1, Division 1, Group D for the locations indicated.
 - a. Electrical Characteristics: 208/230V AC, three-phase; 42.0/40.0 Amp full load per motor for unit 96 inches wide.
 - b. Electrical Characteristics: 208/230V AC, three-phase; 55.0/51.0 Amp full load per motor for unit 120 inches wide.
 - c. Electrical Characteristics: 208/230V AC, three-phase; 65.0/60.0 Amp full load per motor for units 144 inches to 168 inches wide.
 - d. Electrical Characteristics: 208/230V AC, three-phase; 78.0/71.0 Amp full load per motor for unit 192 inches wide.
 - e. Electrical Characteristics: 460V AC, three-phase; 20 Amp full load per motor for unit 96 inches wide.
 - f. Electrical Characteristics: 460V AC, three-phase; 25.5 Amp full load per motor for unit 120 inches wide.
 - g. Electrical Characteristics: 460V AC, three-phase; 30.0 Amp full load per motor for units 144 inches to 168 inches wide.
 - h. Electrical Characteristics: 460V AC, three-phase; 35.5 Amp full load per motor for unit 192 inches wide.
 - i. Electrical Characteristics: 575V AC, three-phase; 16.8 Amp full load per motor for unit 96 inches wide.
 - j. Electrical Characteristics: 575V AC, three-phase; 20.2 Amp full load per motor for unit 120 inches wide.
 - k. Electrical Characteristics: 575V AC, three-phase; 24.8 Amp full load per motor for units 144 inches to 168 inches wide.

1. Electrical Characteristics: 575V AC, three-phase; 29.7 Amp full load per motor for unit 192 inches wide.
 2. Fans: Forward curved centrifugal type, double width, and double inlet design, directly driven to an electric motor.
 - a. Provide rigid mounted base between motor and frame.
 - b. Factory balanced blower wheel assembly statically and dynamically.
- B. Housing: Self-contained one-piece type with sufficient strength for mounting from pre-punched mounting holes at both ends to adjacent walls or ceiling without intermediate support.
 1. Size:
 - a. Unheated: 36 inches deep by 28 inches high by width of unit.
 - b. Electric Heated: 42 inches deep by 28 inches high by width of unit.
 - c. Hot Water/Steam Heated: Depth 42 inches single row and 44 inches double row by 28 inches high by width of unit plus 10 inches for manifolds.
 - d. Indirect Fired Gas Heated: 82 1/2 inches deep (including transition and furnace) by 33 inches high by width of unit.
 2. Mounting:
 - a. Unheated Inside Mount.
 - b. Heated Inside Mount.
 - c. Unheated Outside Mount.
 - d. Mount Location Indicated.
 3. Material:
 - a. Provide 10-, 12-, and 14-gauge electro or hot dipped galvanized steel sheet housing conforming to ASTM A 591 and/or ASTM A 653.
 - b. Provide type 304 stainless steel housing with brushed finish. ASTM A 240/A 240M.
 4. Air Inlet Grille and/or Filters: Provide air inlet grille and/or filters specified.
 5. Discharge: Provide integral discharge nozzle specified.
 6. Finish and Color: Provide with, no VOC, corrosion resistant polyurethane powder coated finish for sheet metal housings.
 - a. Titanium Silver.
 - b. Obsidian Black.
 - c. Pearl White.
- C. Environmental and Flying Insect Control Air Curtains: Models for Heights up to 28 feet (8534 mm) for Environmental Separation and Temperature Control and up to 26 feet (7925 mm) for Flying Insect Control.
 1. Discharge Nozzle: Adjustable air foil vanes with a plus/minus 40-degree sweep front to back.
 2. Air Velocity at Nozzle:
 - a. BD 26 96-1: 107 Inch (2720 mm) Wide Units: 6500 feet/min (33.0 m/s) single 10HP motor/fan assemblies.
 - b. BD 26 120-1: 131 Inch (3329 mm) Wide Units: 6500 feet/min (33.0 m/s) single 15HP motor/fan assemblies.
 - c. BD 26 144-1: 155 Inch (3939 mm) Wide Units: 6500 feet/min (33.0 m/s) single 15HP motor/fan assemblies.

- d. BD 26 168-1: 179 Inch (4549 mm) Wide Units: 6500 feet/min (33.0 m/s) single 20HP motor/fan assemblies.
 - e. BD 26 192-1: 203 Inch (5159 mm) Wide Units: 6500 feet/min (33.0 m/s) single 20HP motor/fan assemblies.
- 3. Air Speed at Floor: Minimum of 400 fpm (2 m/s) at 3 feet (914 mm) from the floor.
- 4. Air Inlet Grille and Filters:
 - a. Location: Front.
 - b. Type: Fixed air intake grille.
 - 1) Expanded Metal: 85% open area.
 - c. Type: Filter Only as follows:
 - 1) Filter: Flat bank 2-inch, disposable.
 - 2) Filter: V-bank 2-inch disposable.
 - 3) Filter: V-bank 2-inch aluminum washable.
- 5. Sound Pressure Level At 10 feet (3 m) From Nozzle:
 - a. Single Motor/Fan, 15HP Units: 76 dBA.
 - b. Single Motor/Fan, 20HP Units: 77 dBA.
 - c. Single Motor/Fan, 25HP Units: 78 dBA.
 - d. Single Motor/Fan, 30HP Units: 79 dBA.

2.3 COMPONENTS

- A. Electric Heaters: Provide complete with motor control panel factory mounted to air curtain housing, and thermostat to be field installed.
 - 1. Temperature limit controller.
 - 2. Heating Coils: UL approved. Factory mounted on the intake side of the air curtain cabinet.
- B. Steam Heaters: Provide finned tube steam coils for field mounting on air intake side of the air curtain cabinet with opposite end connections.
 - 1. Output: Air curtain manufacturer's standard, one-row coils.
 - 2. Output: Air curtain manufacturer's standard, two-row coils.
 - 3. Coils: Certified in accordance with AHRI 410.
 - 4. Connections: Opposite end, horizontal.
 - 5. Connections: Same end, right hand, horizontal.
 - 6. Connections: Same end, left hand, horizontal.
 - 7. Connections: Opposite end, vertical.
 - 8. Connections: Same end, right hand, vertical.
 - 9. Connections: Same end, left hand, vertical.
 - 10. Casing: One-piece unpainted galvanized steel, bolted to air curtain housing.
- C. Hot Water Heaters: Provide finned tube water coils for field mounting on air intake side of the air curtain cabinet with opposite end connections.
 - 1. Output: Air curtain manufacturer's standard, one-row coils.
 - 2. Output: Air curtain manufacturer's standard, two-row coils.
 - 3. Coils: Certified in accordance with AHRI 410.
 - 4. Connections: Opposite end, horizontal.
 - 5. Connections: Same end, right hand, horizontal.
 - 6. Connections: Same end, left hand, horizontal.

7. Connections: Opposite end, vertical.
 8. Connections: Same end, right hand, vertical.
 9. Connections: Same end, left hand, vertical.
 10. Casing: One-piece unpainted galvanized steel, bolted to air curtain housing.
 11. Supply and return fittings on top of casing.
- D. Gas Heaters: Provide field mounted indirect natural gas fired, power vented duct furnace, with aluminized steel heat exchanger and die-formed stainless steel insert burners; manifolds, orifices, flame sensor, and igniter easily removable as an assembly.
1. Output: Air curtain manufacturer's standard.
 2. Complies with:
 - a. Canadian Standards Association (CSA) labeled for US and Canadian application.
 - b. ANSI Z223/NFPA 54 National Fuel Gas Code.
 - c. CAN/CGA B149.1 Installation Codes for Natural Gas Burning Appliances and Equipment.
 3. Coils: Certified in accordance with AHRI 410.
 4. Fuel Type: Provide orifices for:
 - a. Natural gas.
 - b. LP.
 5. 24 V control voltage transformer.
 6. Combination single-stage gas control system with regulated combination redundant gas valve and intermittent spark pilot with electronic flame supervision.
 7. Limit and safety controls.
- E. Motor Control Panels for Unheated Units: Recommended for units whenever a door limit switch is used to automatically start and stop the air curtain. Provide motor control panel as follows:
1. Mounting: Shipped loose to be field mounted.
 2. Mounting: Factory mounted on right hand side of air curtain housing.
 3. Mounting: Factory mounted on left hand side of air curtain housing.
 4. Electrical Components UL/CUL listed.
- F. Motor Control Panels for Electric Heated Units: Recommended for all units whenever a door limit switch is used to automatically start and stop the air curtain. Thermostat is included with optional motor control panel for field installation. Provide motor control panel as follows
1. Thermostat: Wall-mounted, 110-Volt operation, with heater on/off selection.
 2. Mounting: Shipped loose to be field mounted.
 3. Mounting: Factory mounted on the inside of air curtain housing.
 4. Mounting: Factory mounted on left hand side of air curtain housing.
- G. Motor Control Panels for Steam and Hot Water Heated Units: Recommended for all units whenever a door limit switch is used to automatically start and stop the air curtain. Thermostat is included with optional motor control panel for field installation. Provide motor control panel as follows:
1. Thermostat: Wall-mounted, 24-Volt operation, with heater on/off selection
 2. Mounting: Shipped loose to be field mounted

3. Mounting: Factory mounted on right hand side of air curtain housing.
 4. Mounting: Factory mounted on left hand side of air curtain housing.
- H. Motor Control Panels for Gas Heated Units: Recommended for all units whenever a door limit switch is used to automatically start and stop the air curtain. Thermostat is included with optional motor control panel for field installation. Provide motor control panel as follows:
1. Thermostat: Wall-mounted, 24-Volt operation, with heater on/off selection
 2. Mounting: Shipped loose to be field mounted.
 3. Mounting: Factory mounted on right hand side of air curtain housing.
 4. Mounting: Factory mounted on left hand side of air curtain housing.
 5. Motor Control Panels are UL Listed and CSA Approved
- I. Door-Activated Limit switch(s): Provide, field installed 250-Volts, 20 amps limit switch to control air curtain(s) as follows; Automatic on/off control, activates air curtain when door is opened and turns off when door is closed. Provide limit switch for direct control one 1 HP or up to two 1/2 HP single phase motors without a separate control panel. Provide a separate control panel for three-phase motors and/or units exceeding 1 HP, 250-Volts or 20 amps controlled by a limit switch.
1. Type: Combination plunger/roller switch for swing and sliding doors.
 - a. Provide limit switches with NEMA 1 (20 amps) ratings in locations indicated.
 - b. Provide limit switches with NEMA 4X (10 amps) ratings in locations indicated.
 - c. Provide limit switches with NEMA 4X (15 amps) ratings in locations indicated.
 - d. Provide limit switches with NEMA 7 (10 amps) ratings in locations indicated.
 2. Operation for Unheated Units: Automatic on/off control, on when door is opened, off when door is closed.
 3. Operation for Gas Heated Units: Automatic on when door is opened, off after time delay period (60 seconds) after door is closed.
- J. Provide mounting hardware as required for the opening.

PART 3 EXECUTION

3.1 EXAMINATION

- A. Verify that required utilities are in correct location and are of correct capacities for specified products.
- B. Verify openings to receive air curtains are plumb, level, square, accurately aligned, correctly located, and in tolerance.
- C. Examine surfaces to receive air curtains. If surface preparation is the responsibility of another installer, notify Architect of unsatisfactory preparation before proceeding.

3.2 INSTALLATION

- A. Install air curtains in accordance with approved shop drawings and manufacturer's printed installation instructions.
- B. Install air curtains plumb, level, square, true to line, and weathertight, without warp or rack.
- C. Anchor air curtains securely in place to supports.
- D. Coordinate with sheet metal flashing as specified in Section 07 62 00.
- E. Install joint sealants as specified in Section 07 92 00.
- F. Coordinate with electrical power as specified in Section 26 05 00.
- G. Install door limit switches and adjust for correct operation.
- H. Provide connection to piped services and utilities as specified in Section 22 10 00 and 23 21 00.

3.3 FIELD QUALITY CONTROL

- A. Adjust air curtains to function properly.
- B. Adjust air foil vanes located within the discharge nozzle as required for prevailing conditions at each opening.
- C. Check heated air curtain performance on a calm day by measuring air temperature 6 inches off the floor. Optimal reading is halfway between the temperature inside and outside the building.

3.4 CLEANING

- A. Clean air curtains promptly after installation in accordance with manufacturer's instructions.
- B. Repair minor damages to finish in accordance with manufacturer's instructions and as approved by Architect.
- C. Remove and replace damaged components that cannot be successfully repaired as determined by Architect.

3.5 PROTECTION

- A. Protect materials and finish from damage until substantial completion.

3.6 SCHEDULES

- A. Refer to Air Curtain Schedule appended to this section.

END OF SECTION



BD26 Submittal Package

atmosphere is everything

14716 S. BROADWAY, GARDENA, CA 90248 • Ph: (310)532-1555 Fax: (310)-532-3030 • www.marsair.com
© Copyright Mars Air Systems, LLC 2014

Reference Links

Link

Description

<https://marsair.com/>

Main website

<https://marsair.com/document-library>

Submittals for all Mars Air Curtains,
Accessories, Installation, and Brochures

<https://www.marsair.com/Downloads/CSISpecs/BD26-CSI-Specification.doc>

Belt Drive 26 Series CSI spec (Word doc)