



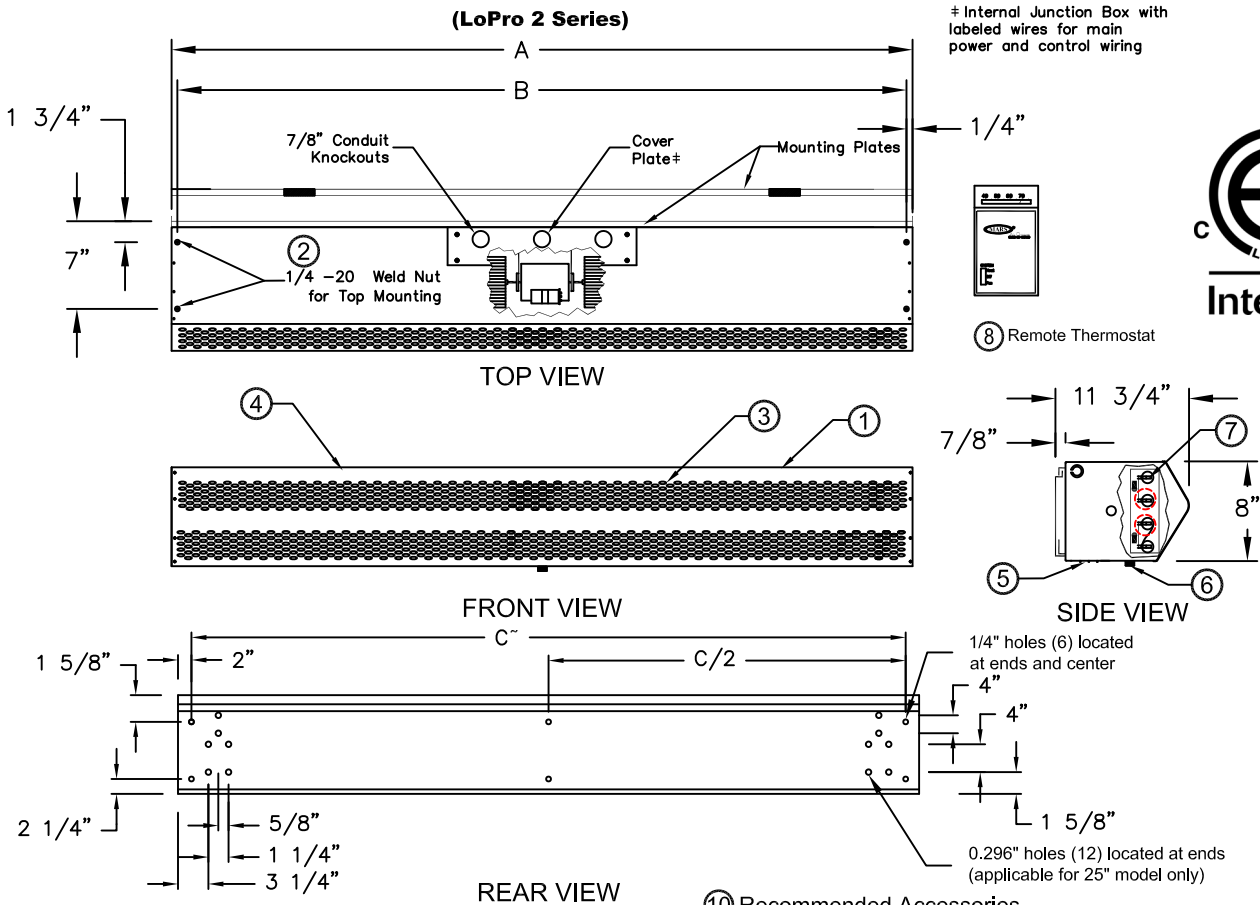
atmosphere is everything

14716 S. Broadway • Gardena, CA 90248 • USA
 TEL: (310) 532-1555 • (800) 421-1266 • FAX: (310) 324-3030
 Web Site: www.marsair.com • E-mail: info@marsair.com

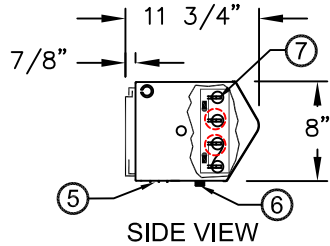
PROJECT		OPTIONS/ITEMS	
TITLE			
COMMENTS		DATE 2/11/22	PAGE
		REV. NO	
MODEL NO. LPV2 Series	DRAWING NO LPV2ELC-F	DRAWN BY BH	CHECKED BY
		FILE NAME	

Electric Heated Drawing

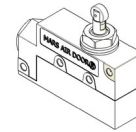
LPV2 (LoPro 2 Series)



(8) Remote Thermostat



(10) Recommended Accessories



(9) Door Limit Switches

"-C" only applies to single units up to 72" units. Dims are not applicable for units 84" and longer.

*- Use corresponding letters in "Voltage Code" then "Wattage Code" columns to complete the model numbers.

Note: MARS reserves the right to change specifications and product design without notice. Such revisions do not entitle the buyer to corresponding changes, improvements additions or replacements for previously purchased equipment.

MODEL NUMBER	OVERALL LENGTH A (in)	MOUNTING WIDTH B (in)	REAR MOUNTING CENTER C (in)
LPV225-1E**-OB	25	24 1/2	21
LPV236-1E**-OB	36	35 1/2	32
LPV242-1E**-OB	42	41 1/2	38
LPV248-1E**-OB	48	47 1/2	44
LPV260-1E**-OB	60	59 1/2	56
LPV272-1E**-OB	72	71 1/2	68
LPV284-2E**-OB	86	85 1/2	N/A
LPV296-2E**-OB	98	97 1/2	N/A
LPV2108-2E**-OB	110	109 1/2	N/A
LPV2120-2E**-OB	122	121 1/2	N/A
LPV2144-2E**-OB	146	145 1/2	N/A

Notes:

- This product is designed to meet the National Electric Code (NEC) and is ETL listed for the US and Canada (UL 2021 and CSA 22.2).
- 1/4" mounting holes provided for wall mounting (4) and overhead mounting (4), (2) on each end.
- All units have a self contained one piece cabinet up to 72", fire retardant and corrosion proof paint lock metal double protected with baked on Obsidian Black color, rust preventative electrostatic polyurethane powder coating.
- Cabinet has sufficient strength for fastening to wall on both ends without intermediate support. Units greater than 72" are double units joined with a 2" mounting bracket located in the center and must be center supported.
- Unit is to be installed such that air flow is unobstructed. Unit has a 3" air discharge nozzle containing adjustable air directional vanes with 40° sweep front to back.
- Mounted adjustable speed controller knob allows air velocity to meet a wide range of field conditions. Units greater than 72", the speed controller and heater on/off toggle controls will be located on the right hand unit and controls both units.
- Control panel is pre-wired and pre-mounted inside the cabinet. Units greater than 72" require dual power supplies, one for each section. Optional remote mounted available.
- Wall mounted thermostat is shipped loose and field installed.
- Circuit protection as per NEC by others.
- Optional door limit switch and mounting brackets are field installed and/or wired by others. The door limit switch is to be mounted such that the air curtain turns on as door begins to open. To prevent unit damage, the mounting brackets must be installed such that the bottom of the air curtain is not below the door header.

LPV2 (LoPro2 Variable Speed) Series

Electric Heated

Model Lengths 25" – 144"



atmosphere is everything

14716 S. BROADWAY, GARDENA, CA 90248 • Ph: (310)532-1555 Fax: (310)532-3030 • www.marsair.com
© Copyright Mars Air Systems, LLC 2014

Electric Heated Data Sheet

Applications: Environmental Separation (up to 8') and Insect Control (up to 7')

LPV2 (Low Profile Variable 2) Series 2	Mechanical Data						Lab Data	
	Model Number	Nozzle Length (in)	Length (in)	Depth (in)	Height (in)	Motor (hp)	Weight (lbs)	Max Velocity (fpm)
LPV225-1E**-OB	25	25	12	8	1/6	25	1800	625
LPV236-1E**-OB	36	36	12	8	1/6	35	1800	900
LPV242-1E**-OB	42	42	12	8	1/6	40	1800	1050
LPV248-1E**-OB	48	48	12	8	1/6	45	1800	1200
LPV260-1E**-OB	60	60	12	8	1/6	55	1800	1500
LPV272-1E**-OB	72	72	12	8	1/6	65	1800	1800
LPV284-2E**-OB	86	86	12	8	Two 1/6	80	1800	2100
LPV296-2E**-OB	98	98	12	8	Two 1/6	90	1800	2400
LPV2108-2E**-OB	110	110	12	8	Two 1/6	100	1800	2700
LPV2120-2E**-OB	122	122	12	8	Two 1/6	110	1800	3000
LPV2144-2E**-OB	146	146	12	8	Two 1/6	130	1800	3600

* - Use corresponding letters in "Electrical Data" & "Heater Wattage Data" columns to complete the model numbers.

Note: Data above is for 60 Hz, 17% reduction in the performance data with 50 Hz.

Features:

- ❖ 1/6 HP continuous duty motors
- ❖ Sleek self-contained one-piece light gauge corrosion resistant paint lock metal design
- ❖ ETL Certified to conform to UL 2021 (US) and CSA 22.2 (Canada) Standards
- ❖ Dynamically balanced corrosion resistant aluminum crossflow wheels
- ❖ Very low-profile design, 8" (H) x 8 7/8" (D)
- ❖ Variable speed controller
- ❖ Wall mounting bracket removable for easy installation
- ❖ 1/4" mounting holes provided for wall mounting (4) and overhead mounting (4), 2 on each end
- ❖ Cabinet has sufficient strength for fastening to wall on both ends without intermediate support up to 72". (Models 84" to 144" require intermediate support in the center.)
- ❖ Adjustable air directional vane with 40° sweep front to back
- ❖ Standard color is Obsidian Black
- ❖ Rust preventative electrostatic polyurethane powder coating
- ❖ 18 months parts warranty
- ❖ Freight Included (FOB Continental USA)
- ❖ Proudly Made in the USA

Three Phase Electrical Data (FLA)	Unit Voltage (Voltage Code) Amperage				Heater kilowatts (Wattage Code) kW				Temp Rise °F
	208v/30 (E)	230v/30 (F)	460v/30 (O) †	575v/30 (Q) †	(G)	(I)	(M)	(O)	
LPV225-1E**-OB	-	-	-	-	-	-	-	-	-
LPV236-1E**-OB	28	26.0	13.0	11.0	10.0	-	-	-	36
LPV242-1E**-OB	28	26.0	13.0	11.0	10.0	-	-	-	31
LPV248-1E**-OB	37	33.0	17.0	14.0	-	13.0	-	-	35
LPV260-1E**-OB	37	33.0	17.0	14.0	-	13.0	-	-	28
LPV272-1E**-OB	37	33.0	17.0	14.0	-	13.0	-	-	23
LPV284-2E**-OB	56	51.0	26.0	21.0	-	-	20.0	-	31
LPV296-2E**-OB	73	66.0	33.0	27.0	-	-	-	26.0	35
LPV2108-2E**-OB	73	66.0	33.0	27.0	-	-	-	26.0	31
LPV2120-2E**-OB	73	66.0	33.0	27.0	-	-	-	26.0	28
LPV2144-2E**-OB	73	66.0	33.0	27.0	-	-	-	26.0	23

* - Use corresponding letters in "Voltage Code and Wattage Code" to complete the model numbers.
Motor amps per motor: 2.4A @ 115v; 1.2A @ 208/230v/10.

For Ampacity Multiply FLA X 1.25

† - For 460v/30 & 575v/30, a separate 115v or 208/230v, single phase power supply is required.

Electric Heater Coil and Wiring

- ❖ Coils are an open type for rapid temperature rise to be located in the air curtain's intake directly in the air stream
- ❖ Automatic and Manual reset thermal overload protection provided
- ❖ Controls internally mounted, prewired ready for power connection and accessible through the intake or top access panels
- ❖ 3/4" knockouts are provided on the top and ends
- ❖ An ON/OFF switch is unit mounted at the bottom and the control voltage is 24 volts
- ❖ A wall mounted 24-volt thermostat is included (field wired and installed by others)

Mars Recommended Accessories (See Submittals for additional details):

- ❖ Door Limit Switches
 - o 99-014, Combination mechanical switch, 250v, 1HP Max
- ❖ Controllers
 - o SK-EU, SimpleLink, 208V-575V, (460-575V, 3PH needs additional 115-230V, 1PH power), Integral Control, Nema1
- ❖ Factory Mounted Options
 - o INS-TD, Adjustable time delay (1 sec to 17 min)
 - o INS-HD, Heat on demand
 - o BMS-300, BMS for monitor and control

Note: Dry contact provided in panel for monitoring motor and heater. 24Vac signal provided from panel for controlling motor and heater.
- ❖ Brackets
 - o B0042, Transom mounting bracket set for LPV2
- ❖ Filters
 - o J05**, ¼" aluminum pressed frame bank filters (** = Model Length)
 - o Not applicable for
 - LPV2 with SimpleLink
 - 208/230v, 1PH, 9.5kW and above
 - 208/230v, 3PH, 10kW for LPV236 and LPV242

Sound Levels: (measured at 10' in an open field)

(25" & 36") - 49 dBA, (42") - 50 dBA, (48") - 52 dBA, (60"-96") - 53 dBA & (108"-144") - 54dBA

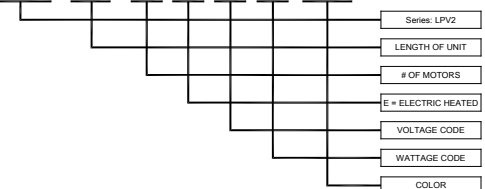
Single Phase Electrical Data (FLA)	Unit Voltage (Voltage Code) Amperage		Heater kilowatts (Wattage Code) kW			Temp Rise °F
	208v/10 (B)	230v/10 (C)	(C)	(D)	(F)	
LPV225-1E**-OB	30.0	27.0	6.1	-	-	31
LPV236-1E**-OB	30.0	27.0	6.1	-	-	22
LPV242-1E**-OB	39.0	35.0	-	8.0	-	25
LPV248-1E**-OB	39.0	35.0	-	8.0	-	22
LPV260-1E**-OB	46.0	42.0	-	-	9.5	21
LPV272-1E**-OB	46.0	42.0	-	-	9.5	17
LPV284-2E**-OB	-	-	-	-	-	-
LPV296-2E**-OB	-	-	-	-	-	-
LPV2108-2E**-OB	-	-	-	-	-	-
LPV2120-2E**-OB	-	-	-	-	-	-
LPV2144-2E**-OB	-	-	-	-	-	-

* - Use corresponding letters in "Voltage Code and Wattage Code" to complete the model numbers.
Motor amps per motor: 1.2A @ 208/230v/10.

For Ampacity Multiply FLA X 1.25

EXAMPLE

LPV2 72 -1 E H G -OB



NOTE: MARS AIR SYSTEMS, LLC reserves the right to change specifications and product design without notice. Such revisions do not entitle the buyer to corresponding changes, improvements, additions, or replacements for previously purchased equipment.