



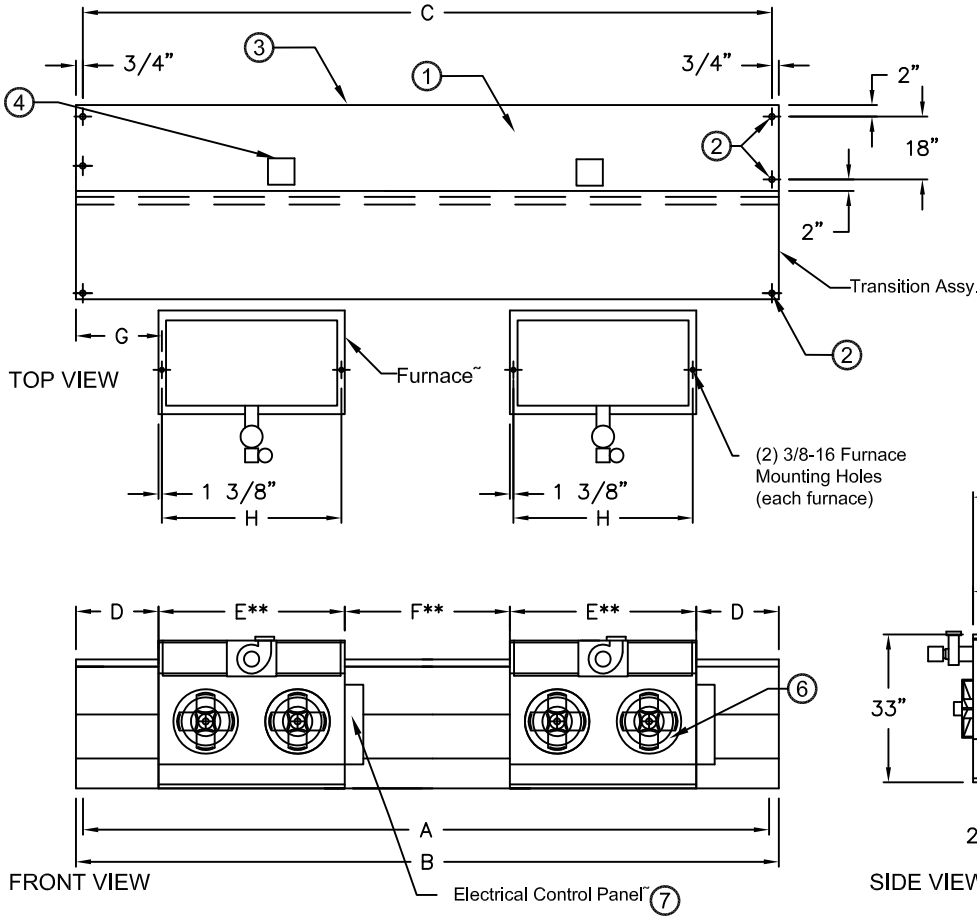
atmosphere is everything

14716 S. Broadway • Gardena, CA 90248 • USA
 TEL: (310) 532-1555 • (800) 421-1266 • FAX: (310) 324-3030
 Web Site: www.marsair.com • E-mail: info@marsair.com

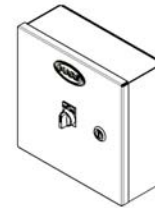
PROJECT		OPTIONS/ITEMS	
TITLE			
COMMENTS		DATE 7/5/16	PAGE
		REV. NO	
MODEL NO. WMI Series	DRAWING NO WMII-F	DRAWN BY BH	CHECKED BY
		FILE NAME	

Indirect Fired Gas Heated Drawing

WMI (Wind Stopping 14) Series



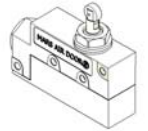
⑧ Recommended Accessories



Control Panels



Remote T'stat
Shipped Loose



Door Limit Switches



Air Curtain Only



Furnace Only

Note: MARS reserves the right to change specifications and product design without notice. Such revisions do not entitle the buyer to corresponding changes, improvements additions or replacements for previously purchased equipment.

*Please see Furnace Submittal for Furnace Data and Dimension
 Removal of Furnace may be required for servicing and trouble shooting.

*- Use corresponding letters in "Electrical Data" columns to complete the model numbers.

** For 3 furnace models, please add an additional E and F dims

Notes:

- The Air Curtains are CSA listed and the Furnaces are ETL verified to be 83% efficient with 3/8 overhead mounting hardware for overhead mounting.
- 5/8" mounting holes (6) provided, (2) on each end of air curtain and (1) on each end of transition assembly.
- Cabinet has sufficient strength for fastening from overhead on both ends without intermediate support. Furnace must be mounted at least 2" away from the transition. Transition pieces are provided with pilot holes for easy field assembly and hardware is included. Units larger than 8' utilize multiple transitions.
- One watertight electrical junction box per motor mounted on top center of each motor.
- Unit is to be installed such that air flow is unobstructed. Air discharge nozzle containing adjustable air directional vanes with 40° sweep front to back.
- Furnaces with impellers have positive pressure, 20 gauge aluminized tubular heat exchanger with in-shot burner technology, power vented exhaust (horizontal or vertical), single stage gas valve, direct spark ignition and certified for Category I and III venting.
- Circuit protection as per NEC by others.
- Optional motor control panel and door limit switch are field installed and/or wired by others. The door limit switch is to be mounted such that the air curtain turns on as door begins to open. To prevent unit damage, the air curtain must be installed such that the bottom of the air curtain is not below the door header.

MODEL NUMBER	Nozzle Width (in) A	Overall Width (in) B	Mounting Centers (in) C	End Space (in) D	Furnace Width (in) E	Center Space (in) F	Mounting Distance (in) G	End Dim (in) H	Furnace Size (MBH)
WMI96-2I*-TS	96	99	97 1/2	24 1/8	50 3/4	-	25 1/2	48 5/8	400
WMI120-2I*-TS	120	123	121 1/2	14 3/8	32 3/4	28 3/4	15 3/4	30 5/8	2@250
WMI144-2I*-TS	144	147	145 1/2	11 3/8	50 3/4	22 3/4	12 3/4	48 5/8	2@400
WMI168-3I*-TS	168	171	169 1/2	17 3/8	50 3/4	34 3/4	18 3/4	48 5/8	2@400
WMI192-4I*-TS	192	195	193 1/2	2 7/8	50 3/4	18 1/2	4 1/4	48 5/8	3@300

WMI (Wind Stopping 14) Series

Indirect Fired Gas Heated

Model Lengths 96" – 192"



atmosphere is everything

14716 S. BROADWAY, GARDENA, CA 90248 • Ph: (310) 532-1555 Fax: (310) 532-3030 • www.marsair.com
© Copyright Mars Air Systems, LLC 2014

Indirect Fired Gas Heated Data Sheet

Applications: Environmental Separation: Max Height 16' / Insect Control: Max Height 14'

WMI (Wind Stopping 14)	Mechanical Data							Lab Data					
	Model Number	Nozzle Length (in)	Length (in)	Depth (in)	Height (in)	Motor (hp)	Total Weight**** (lbs)	Furnace Weight (lbs)	Max Velocity (fpm)	Max Volume (cfm)	Avg Velocity (fpm)	Volume (cfm)	Uniformity (%)
WMI96-2I*-TS	96	99	78 1/2	33	Two 2	944	1 @ 335	5500	16500	2614	7842	92	4260
WMI120-2I*-TS	120	123	78 1/2	33	Two 3	1146	2 @ 211 ea	5200	19500	3205	9474	90	5600
WMI144-2I*-TS	144	147	78 1/2	33	Two 3	1498	2 @ 335 ea	5800	26100	3009	13422	86	6340
WMI168-3I*-TS	168	171	78 1/2	33	Three 3	1702	2 @ 335 ea	4900	25725	2920	15060	84	8070
WMI192-4I*-TS	192	195	78 1/2	33	Four 2	2122	3 @ 307 ea	5500	33000	2614	15684	92	8520

* - Use corresponding letters in "Electrical Data" columns to complete the model numbers. **** - Total Weight includes air curtain, transition and furnace weights

Features:

Air Curtain and Transition

- ❖ 2 to 3 HP continuous duty industrial motors
- ❖ Direct drive unit for heavy duty industrial projects
- ❖ Air curtain is CSA Certified to conform to UL 507 (US) and CSA 22.2 (Canada) Standards
- ❖ Top mounting holes provided (5/8")
- ❖ Cabinet has sufficient strength for fastening from overhead on both ends without intermediate support
- ❖ Adjustable air directional vanes with 40° sweep front to back
- ❖ Transition is shipped fully assembled and fastened to unit (overhead support required)
- ❖ Standard color is Titanium Silver
- ❖ Rust preventative electrostatic polyurethane powder coating
- ❖ 1 Year parts warranty
- ❖ Freight Not Included (FOB Factory)
- ❖ Proudly Made in the USA

Indirect Fired Gas Furnaces

- ❖ ETL verified to be 83% efficient
- ❖ In-shot burner technology
- ❖ Aluminized tubular heat exchanger (20 gauge)
- ❖ Positive pressure 120V impellers (separate 120V, 1Ø power req'd)
- ❖ Power vented exhaust
- ❖ Single stage gas valve
- ❖ Standard direct spark ignition
- ❖ Certified for Category I and III Venting
- ❖ Natural gas
- ❖ Factory test fired
- ❖ Overhead mounting hardware provided (2 per furnace)

Options and Accessories: (see Accessories Brochure)

- ❖ Motor Control Panels with remote mounted t'stat
- ❖ 409 and 321 stainless steel heat exchangers
- ❖ Separated combustion
- ❖ Two stage and modulating gas valves
- ❖ LP gas
- ❖ Custom housing and transition colors and finishes (304SS, 316SS, Aluminum)

Sound Levels: (measured at 10' in an open field)

1 Motor Unit = 65 dBA, 2 Motor Unit = 66 dBA, 3 Motor Unit = 67 dBA & 4 Motor Unit = 68dBA

Electrical Data (FLA)	Unit Voltage (Voltage Code)			Electrical Data (FLA) Furnace
	208/230v/3Ø (G)	460v/3Ø (H)	575v/3Ø (I)	
				115V
WMI96-2I*-TS	14.4/14.0	7.0	4.6	13.5
WMI120-2I*-TS	28.4/21.2	10.6	4.6	16.0
WMI144-2I*-TS	28.4/21.2	10.6	4.6	27.0
WMI168-3I*-TS	42.6/31.8	15.9	6.9	27.0
WMI192-4I*-TS	28.8/28.0	14.0	9.2	33.9

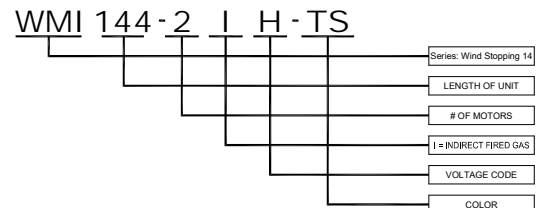
* - Use corresponding letters in "Electrical Data" columns to complete the model numbers.

Note: For Ampacity Multiply FLA X 1.25

Indirect Fired Gas Data						
Model Number	# of Furnaces	Input MBH per Furnace	Total Output MBH	Temp Rise (°F)	Flue Size	Natural Gas (NPT) CONN
WMI96-2I*-TS	1	400	332	39	6" Rnd	3/4"
WMI120-2I*-TS	2	250	415	41	5" Rnd	1/2"
WMI144-2I*-TS	2	400	664	46	6" Rnd	3/4"
WMI168-3I*-TS	2	400	664	41	6" Rnd	3/4"

Note: Gas pressure required min/max in ("wc)(kPa): Natural Gas (3.5/14)(0.9/3.5) and LP (10/14)(2.5/3.5)

EXAMPLE



Air Curtain Only



Intertek
Furnace Only

NOTE: MARS AIR SYSTEMS, LLC reserves the right to change specifications and product design without notice. Such revisions do not entitle the buyer to corresponding changes, improvements, additions or replacements for previously purchased equipment.