



atmosphere is everything

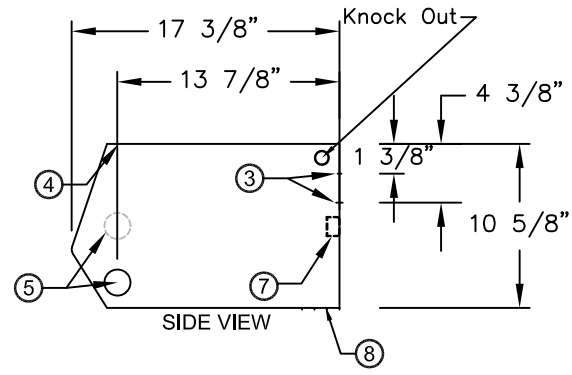
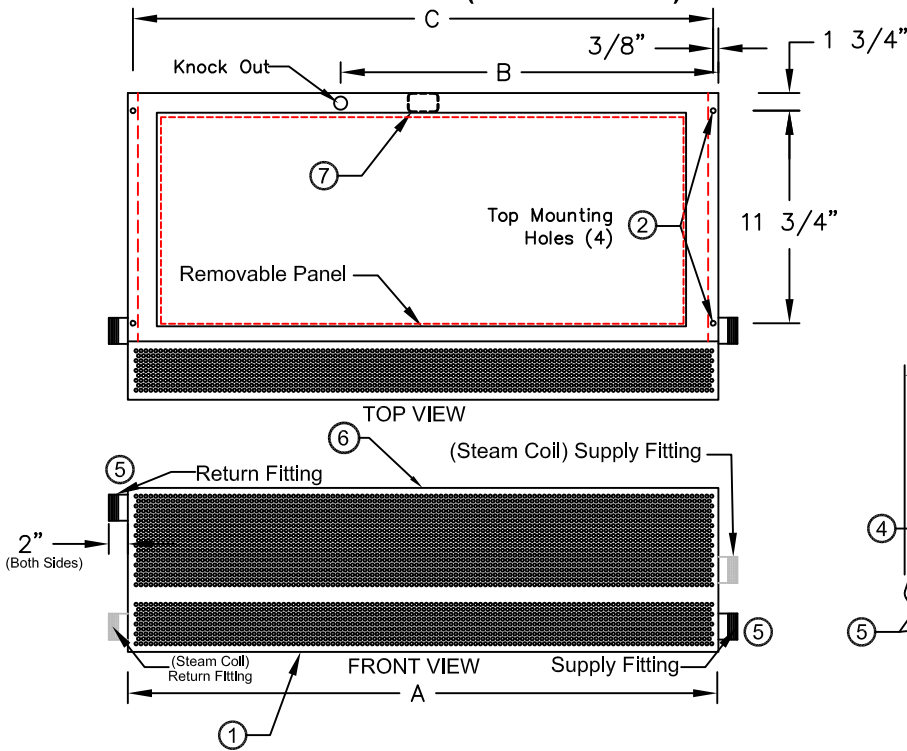
14716 S. Broadway • Gardena, CA 90248 • USA
 TEL: (310) 532-1555 • (800) 421-1266 • FAX: (310) 324-3030
 Web Site: www.marsair.com • E-mail: info@marsair.com

PROJECT		OPTIONS/ITEMS	
TITLE		DATE	
COMMENTS		4/6/15	PAGE
		REV. NO	
MODEL NO. STD2 Series	DRAWING NO STD2HWS-F	DRAWN BY TVN	CHECKED BY
		FILE NAME	

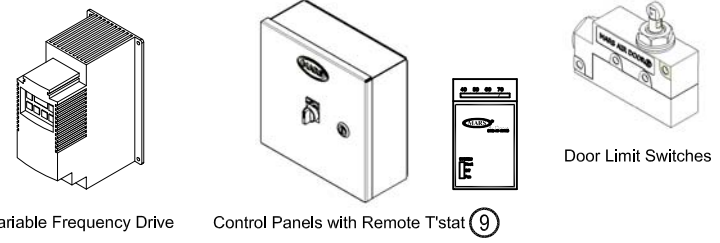
Hot Water/Steam Heated Drawing

STD2

(Standard 2 Series)



10 Recommended Accessories



*- Use corresponding letters in "Coil Data" then "Electrical Data" columns to complete the model numbers.

Note: MARS reserves the right to change specifications and product design without notice. Such revisions do not entitle the buyer to corresponding changes, improvements additions or replacements for previously purchased equipment.

MODEL NUMBER	OVERALL LENGTH A (in)	KNOCKOUT LOCATION B (in)	REAR MOUNTING CENTER C (in)	CONN. DIA (in)
STD236-1**-OB	36	25 1/2	35 1/4	1 1/2 MPT
STD242-1**-OB	42	28 1/2	41 1/4	1 1/2 MPT
STD248-1**-OB	48	31 1/2	47 1/4	1 1/2 MPT
STD260-2**-OB	60	34	59 1/4	1 1/2 MPT
STD272-2**-OB	72	40	71 1/4	1 1/2 MPT
STD284-2**-OB	84	46	83 1/4	1 1/2 MPT
STD296-2**-OB	96	52	95 1/4	1 1/2 MPT
STD2108-3**-OB	108	58	107 1/4	1 1/2 MPT
STD2120-3**-OB	120	64	119 1/4	1 1/2 MPT
STD2144-3**-OB	144	76	143 1/4	1 1/2 MPT

- Notes:
- This product is designed to meet the National Electric Code (NEC) and is ETL listed for the US and Canada (UL 1995 and CSA 22.2).
 - (4) 7/16" mounting holes provided on for overhead mounting provided, (2) on each end.
 - (2) 1/2" key hole slots and (2) 7/16" mounting holes are provided on each end of the back side for wall mounting.
 - All units have a self contained one piece cabinet, fire retardant and corrosion proof paint lock metal double protected with baked on Obsidian Black color, rust preventative electrostatic polyurethane powder coating.
 - Hot Water application shown. For Steam, return fitting is at bottom of manifold and supply is at center of manifold.
 - Cabinet is to be mounted from overhead or fastened to a wall and has sufficient strength for suspension from both ends without intermediate support.
 - Internal J-Box(es) for electrical wiring are provided.
 - Unit is to be installed such that air flow is unobstructed. Unit has a 3" air discharge nozzle containing adjustable air directional vanes with 40° sweep front to back.
 - Circuit protection as per NEC by others.
 - Optional motor control panel, door limit switch and mounting brackets are field installed and/or wired by others. The door limit switch is to be mounted such that the air curtain turns on as door begins to open. To prevent unit damage, the mounting brackets must be installed such that the bottom of the air curtain is not below the door header.

STD2 (Standard 2) Series

Hot Water/Steam Heated
Model Lengths 36" – 144"



atmosphere is everything

14716 S. BROADWAY, GARDENA, CA 90248 • Ph: (310) 532-1555 Fax: (310) 532-3030 • www.marsair.com
© Copyright Mars Air Systems, LLC 2014

Hot Water/Steam Heated Data Sheet

Applications: Environmental Separation: Max Height 12' / Insect Control: Max Height 10'

STD2 (Standard) Series 2 Model Number	Mechanical Data						Lab Data				
	Nozzle Length (in)	Length (in)	Depth (in)	Height (in)	Motor (hp)	Weight (lbs)	Max Core Velocity at Nozzle (fpm)	Avg Velocity (fpm)	Volume (cfm)	Uniformity (%)	Power Rating (watts)
STD236-1**-OB	36	36	17.5	11	1/2	80	5960	2206	1379	84	500
STD242-1**-OB	42	42	17.5	11	1/2	95	4865	1945	1418	87	510
STD248-1**-OB	48	48	17.5	11	1/2	110	4247	1730	1442	85	550
STD260-2**-OB	60	60	17.5	11	Two 1/2	140	6737	2592	2700	93	940
STD272-2**-OB	72	72	17.5	11	Two 1/2	175	5960	2206	2758	84	1000
STD284-2**-OB	84	84	17.5	11	Two 1/2	205	4865	1945	2836	87	1020
STD296-2**-OB	96	96	17.5	11	Two 1/2	225	4247	1730	2884	85	1100
STD2108-3**-OB	108	108	17.5	11	Three 1/2	255	5960	2206	4137	84	1500
STD2120-3**-OB	120	120	17.5	11	Three 1/2	275	4660	2084	4341	92	1570
STD2144-3**-OB	144	144	17.5	11	Three 1/2	300	4247	1730	4326	85	1650

* - Use corresponding letters in "Coil Data" then "Electrical Data" columns to complete the model numbers.

Note: Data above for 1725 RPM at 60 Hz, 50 Hz is 1425 RPM with a 17% reduction in the performance data.

Features:

Air Curtain

- ❖ 1/2 HP Continuous Duty TEAO Motors
- ❖ Sleek self-contained one piece heavy gauge corrosion proof paint lock metal design
- ❖ ETL Certified to conform to UL 1995 (US) and CSA 22.2 (Canada) Standards
- ❖ Cabinet has sufficient strength for fastening to wall on both ends without intermediate support
- ❖ Adjustable air directional vanes with 40° sweep front to back
- ❖ Standard color is Obsidian Black
- ❖ Rust preventative electrostatic polyurethane powder coating
- ❖ 18 months parts warranty
- ❖ Freight FOB the factory
- ❖ Proudly Made in the USA

Hot Water and Steam Coils

- ❖ Coil casings shall not be less than 16 gauge galvanized steel with tube holes formed with extruded collars.
- ❖ Fins are die formed .006" aluminum (1 row – 10 FPI, 2 row – 8 FPI)
- ❖ Coil tubes constructed of heavy wall, 5/8" OD seamless copper (Steam - .035" & Hot Water - .025")
- ❖ Coil tubes arranged in a staggered pattern and mechanically expanded into fins to ensure a uniform pressure bond
- ❖ Manifolds shall be of heavy seamless copper construction
- ❖ All joints shall be brazed with high temperature silver brazing alloy (Steam – 7% & Hot Water – 3%), max steam operating pressure: 30 PSI
- ❖ Fittings shall be of wrought copper or similar construction such that the entire fluid circuit shall be of compatible nonferrous materials.
- ❖ Manifold shall be fitted with 1/4" vent or drain fittings
- ❖ Supply fitting is on the right side of coil. Return fitting is on the left side

Options and Accessories: (see Accessories Brochure)

- ❖ Motor Control Panels with remote mounted t'stat
- ❖ Steam distribution, Cupro Nickel and CRN coils
- ❖ Rust resistant epoxy coated or SS coils
- ❖ Custom housing colors and finishes (304SS, 316SS)

Sound Levels: (measured at 10' in an open field)

1 Motor Unit = 66 dBA, 2 Motor Unit = 68 dBA, 3 Motor Unit = 71 dBA, 4 Motor Unit = 73 dBA

NOTE: MARS AIR SYSTEMS, LLC reserves the right to change specifications and product design without notice. Such revisions do not entitle the buyer to corresponding changes, improvements, additions or replacements for previously purchased equipment.

Coil Data	Hot Water				Steam		
	Coil Code (W)	GPM	MBH	Temp Rise (°F)	Coil Code (Y)	MBH	Temp Rise (°F)
STD236-1**-OB	1 Row	8	37	25	1 Row	48	32
STD242-1**-OB	1 Row	9	43	28	1 Row	55	36
STD248-1**-OB	1 Row	8	46	30	1 Row	60	39
STD260-2**-OB	1 Row	7	69	24	1 Row	96	33
STD272-2**-OB	1 Row	7	77	26	1 Row	108	37
STD284-2**-OB	1 Row	9	88	29	1 Row	120	39
STD296-2**-OB	1 Row	9	95	31	1 Row	131	42
STD2108-3**-OB	1 Row	8	116	26	1 Row	168	38
STD2120-3**-OB	1 Row	10	129	28	1 Row	183	39
STD2144-3**-OB	1 Row	9	138	30	1 Row	201	43

EAT: 70 F, EWT: 200 F, Steam pressure: 5 PSI

Electrical Data (FLA)	Unit Voltage (Voltage Code)				
	115v/1Ø (A)	208/230v/1Ø (D)	208/230v/3Ø (G)	460v/3Ø (H)	575v/3Ø (I)
STD236-1**-OB	5.1	2.5	1.8/1.6	0.8	0.7
STD242-1**-OB	5.1	2.5	1.8/1.6	0.8	0.7
STD248-1**-OB	5.1	2.5	1.8/1.6	0.8	0.7
STD260-2**-OB	10.2	5.0	3.6/3.2	1.6	1.4
STD272-2**-OB	10.2	5.0	3.6/3.2	1.6	1.4
STD284-2**-OB	10.2	5.0	3.6/3.2	1.6	1.4
STD296-2**-OB	10.2	5.0	3.6/3.2	1.6	1.4
STD2108-3**-OB	15.3	7.5	5.4/4.8	2.4	2.1
STD2120-3**-OB	15.3	7.5	5.4/4.8	2.4	2.1
STD2144-3**-OB	15.3	7.5	5.4/4.8	2.4	2.1

* - Use corresponding letters in "Electrical Data" columns to complete the model numbers.

Note: For Ampacity Multiply FLA X 1.25

