



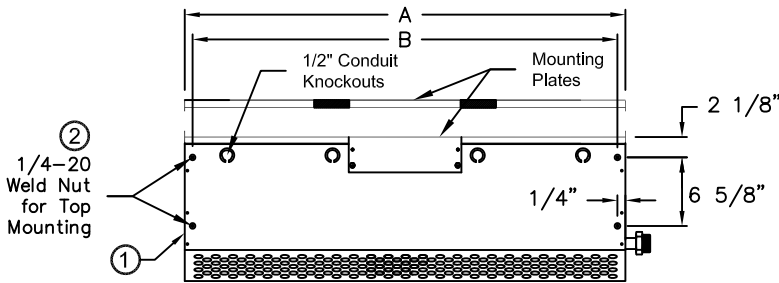
atmosphere is everything

14716 S. Broadway • Gardena, CA 90248 • USA  
 TEL:(310) 532-1555 • (800) 421-1266 • FAX:(310) 324-3030  
 Web Site: www.marsair.com • E-mail: info@marsair.com

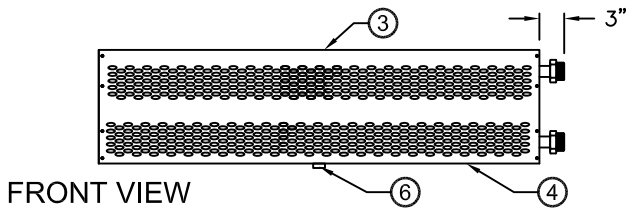
PROJECT		OPTIONS/ITEMS	
TITLE			
COMMENTS		DATE 4/8/15	PAGE
		REV. NO	
MODEL NO. LP2 Series	DRAWING NO LPV2HWS-F	DRAWN BY TVN	CHECKED BY
		FILE NAME	

# Hot Water/Steam Heated Drawing

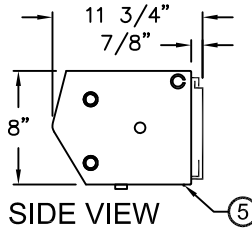
## LPV2 (LoPro2 Variable Speed) Series



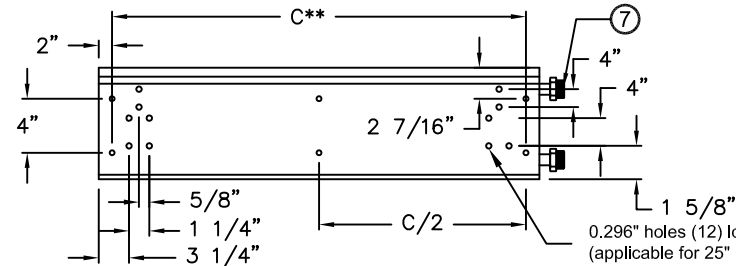
TOP VIEW



FRONT VIEW



SIDE VIEW

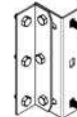


REAR VIEW

### ⑧ Recommended Accessories



Door Limit Switches



Brackets

0.296" holes (12) located at ends (applicable for 25" model only)

#### Notes:

- This product is designed to meet the National Electric Code (NEC) and is ETL listed for the US and Canada (UL 1995 and CSA 22.2).
- 1/4" mounting holes provided for wall mounting (4) and overhead mounting (4), (2) on each end.
- All units have a self contained one piece cabinet, fire retardant and corrosion proof paint lock metal double protected with baked on Obsidian Black color, rust preventative electrostatic polyurethane powder coating.
- Cabinet has sufficient strength for fastening to wall on both ends without intermediate support. Units greater than 72" are double units joined with a 2" mounting bracket located in the center and must be center supported.
- Unit is to be installed such that air flow is unobstructed. Air discharge nozzle containing an adjustable air directional vane with 40° sweep front to back.
- Mounted adjustable speed controller knob allows air velocity to meet a wide range of field conditions. Units greater than 72", the speed controller will be located on the right hand unit and controls both units.
- Steam units have return at bottom and supply at top of manifold. Hot water units have supply on top and return at the bottom. Units are right hand as standard. Units greater than 72" require 2 supplies and 2 returns, 1 each on both ends.
- Circuit protection as per NEC by others.
- Optional door limit switch and mounting brackets are field installed and/or wired by others. The door limit switch is to be mounted such that the air curtain turns on as door begins to open. To prevent unit damage, the mounting brackets must be installed such that the bottom of the air curtain is not below the door header.

\*- Use corresponding letters in "Electrical Data" columns to complete the model numbers.

\*\*- "C" only applies to single units up to 72" units. Dims are not applicable for units 84" and longer.

MODEL NUMBER	OVERALL LENGTH A (in)	MOUNTING WIDTH B (in)	REAR MOUNTING CENTER C (in)
LPV236-1V*-OB	36	35 1/2	32
LPV242-1V*-OB	42	41 1/2	38
LPV248-1V*-OB	48	47 1/2	44
LPV260-1V*-OB	60	59 1/2	56
LPV272-1V*-OB	72	71 1/2	68
LPV284-2V*-OB	86	85 1/2	N/A
LPV296-2V*-OB	98	97 1/2	N/A
LPV2108-2V*-OB	110	109 1/2	N/A
LPV2120-2V*-OB	122	121 1/2	N/A
LPV2144-2V*-OB	146	145 1/2	N/A

# LPV2 (LoPro2 Variable Speed) Series

Hot Water/Steam Heated

Model Lengths 36" – 144"



atmosphere is everything

14716 S. BROADWAY, GARDENA, CA 90248 • Ph: (310)532-1555 Fax: (310)-532-3030 • [www.marsair.com](http://www.marsair.com)  
© Copyright Mars Air Systems, LLC 2014

## Hot Water/Steam Heated Data Sheet

### Applications: Environmental Separation (up to 8')

LPV2 (Low Profile Variable 2) Series 2	Mechanical Data						Lab Data	
	Model Number	Nozzle Length (in)	Length (in)	Depth (in)	Height (in)	Motor (hp)	Weight (lbs)	Max Velocity (fpm)
LPV236-1V-OB	36	39	12	8	1/6	35	1800	900
LPV242-1V-OB	42	45	12	8	1/6	40	1800	1050
LPV248-1V-OB	48	51	12	8	1/6	45	1800	1200
LPV260-1V-OB	60	63	12	8	1/6	50	1800	1500
LPV272-1V-OB	72	75	12	8	1/6	56	1800	1800
LPV284-2V-OB	86	92	12	8	Two 1/6	76	1800	2100
LPV296-2V-OB	98	104	12	8	Two 1/6	86	1800	2400
LPV2108-2V-OB	110	116	12	8	Two 1/6	88	1800	2700
LPV2120-2V-OB	122	128	12	8	Two 1/6	95	1800	3000
LPV2144-2V-OB	146	152	12	8	Two 1/6	110	1800	3600

\* - Use corresponding letters in "Electrical Data" columns to complete the model numbers

Note: Data above is for 60 Hz, 17% reduction in the performance data with 50 Hz.

#### Features:

- Air Curtain
- ❖ 1/6 HP continuous duty motors
- ❖ Sleek self-contained one piece light gauge corrosion resistant paint lock metal design
- ❖ Dynamically balanced corrosion resistant aluminum crossflow wheels
- ❖ Very low profile design, 8" (H) x 8 7/8" (D)
- ❖ ETL Certified to conform to UL 507 (US) and CSA 22.2 (Canada) Standards
- ❖ Variable speed controller
- ❖ Wall mounting bracket removable for easy installation
- ❖ 1/4" mounting holes provided for wall mounting (4) and overhead mounting (4), 2 on each end
- ❖ Cabinet has sufficient strength for fastening to wall on both ends without intermediate support up to 72". (Models 84" to 144" require intermediate support in the center.)
- ❖ Adjustable air directional vane with 40° sweep front to back
- ❖ Standard color is Obsidian Black
- ❖ Rust preventative electrostatic polyurethane powder coating
- ❖ 18 months parts warranty
- ❖ Freight Included (FOB Continental USA)
- ❖ Proudly Made in the USA

#### Hot Water and Steam Coils

- ❖ Coil casings shall not be less than 16 gauge galvanized steel with tube holes formed with extruded collars.
- ❖ Fins are die formed .006" aluminum (1 row – 10 FPI)
- ❖ Coils tubes constructed of heavy wall, 5/8" OD seamless copper (Steam & Hot Water - .035")
- ❖ Coil tubes are mechanically expanded into fins to ensure a uniform pressure bond
- ❖ Manifolds shall be of heavy seamless copper construction
- ❖ All joints shall be brazed with high temperature silver brazing alloy (7%), max steam operating pressure: 30 PSI
- ❖ Fittings shall be of wrought copper or similar construction such that the entire fluid circuit shall be of compatible nonferrous materials.
- ❖ Manifold shall be fitted with 1/4" vent or drain fittings
- ❖ Supply and Return fitting is to be on the right side (specify alternate location)

#### Options and Accessories: (see Accessories Brochure)

- ❖ Wall and Overhead Bracket
- ❖ Custom colors and finishes (304SS, 316SS, Aluminum)

#### Sound Levels: (measured at 10' in an open field)

(25" & 36") - 49 dBA, (42") - 50 dBA, (48") - 52 dBA, (60"-96") - 53 dBA & (108"-144") - 54dBA

NOTE: MARS AIR SYSTEMS, LLC reserves the right to change specifications and product design without notice. Such revisions do not entitle the buyer to corresponding changes, improvements, additions or replacements for previously purchased equipment.

Coil Data	Hot Water				Steam		
	Coil Code (V)	GPM	MBH	Temp Rise (°F)	Coil Code (V)	MBH	Temp Rise (°F)
LPV236-1V-OB	1	6	25	26	1	26	37
LPV242-1V-OB	1	6	30	26	1	43	38
LPV248-1V-OB	1	6	34	26	1	49	38
LPV260-1V-OB	1	7	44	27	1	62	39
LPV272-1V-OB	1	8	54	28	1	76	39
LPV284-2V-OB	1	7	58	26	1	85	38
LPV296-2V-OB	1	7	66	26	1	99	38
LPV2108-2V-OB	1	8	76	26	1	112	38
LPV2120-2V-OB	1	9	86	27	1	125	39
LPV2144-2V-OB	1	10	105	27	1	151	39

EAT: 70 F, EWT: 200 F, Steam pressure: 5 PSI

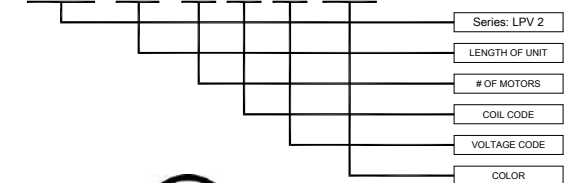
Electrical Data (FLA)	Unit Voltage (Voltage Code)	
	115v/1Ø (A)	208/230v/1Ø (D)
LPV236-1V-OB	2.4	1.2
LPV242-1V-OB	2.4	1.2
LPV248-1V-OB	2.4	1.2
LPV260-1V-OB	2.6	1.4
LPV272-1V-OB	2.6	1.4
LPV284-2V-OB	4.8	2.4
LPV296-2V-OB	4.8	2.4
LPV2108-2V-OB	5.0	2.6
LPV2120-2V-OB	5.2	2.8
LPV2144-2V-OB	5.2	2.8

\* - Use corresponding letters in "Electrical Data" columns to complete the model numbers.

Note: For Ampacity Multiply FLA X 1.25

EXAMPLE

LPV2 72 - 1 V H - TS



Intertek