

# Walk-In Cooler Submittals

LPV236 & STD236



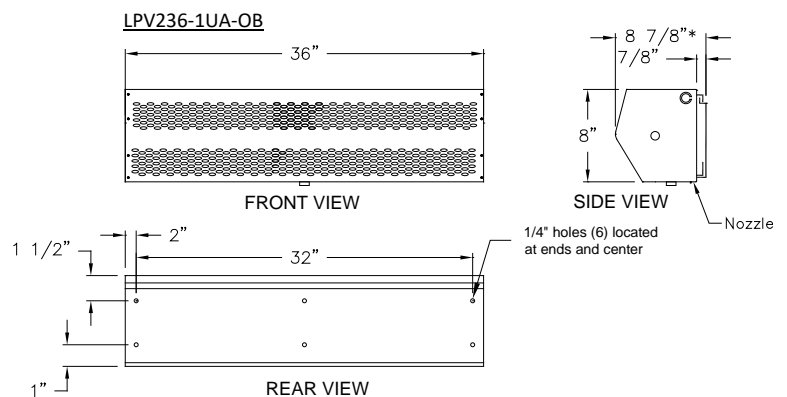
atmosphere is everything

14716 S. BROADWAY, GARDENA, CA 90248 • Ph: (310)532-1555 Fax: (310)532-3030 • [www.marsair.com](http://www.marsair.com)  
© Copyright Mars Air Systems, LLC 2014

Package Part #'s	Includes	Description	Unit Width	Unit Voltage	Weight (lbs)	Air Velocity (fpm)	Air Volume (cfm)	FLA (amps)
LPV236-1UA-WC	LPV236-1UA-OB	LPV236, 1Mtr, 1/6 HP, Unhtd, 115v, 1 $\phi$ , 60Hz, Galv, OB	36"	115v/1 $\phi$	32	1800	900	2.4
	99-018	Switch, Commercial Plastic, Magnetic, Reed, Surf. Mntd, 24v, NEMA1						
	99-050	Controller, RIBD01BDC-010, with Time Delay, 115V /1 $\phi$						
	99-107	Hardware Nylon Bolt 3/8 16 x 6"						
STD236-1UA-WC	STD236-1UA-OB	STD236, 1Mtr, 1/2 HP, Unhtd, 115v, 1 $\phi$ , 60Hz, Galv, OB	36"	115v/1 $\phi$	60	2206	1379	5.1
	99-018	Switch, Commercial Plastic, Magnetic, Reed, Surf. Mntd, 24v, NEMA1						
	99-050	Controller, RIBD01BDC-010, with Time Delay, 115V /1 $\phi$						

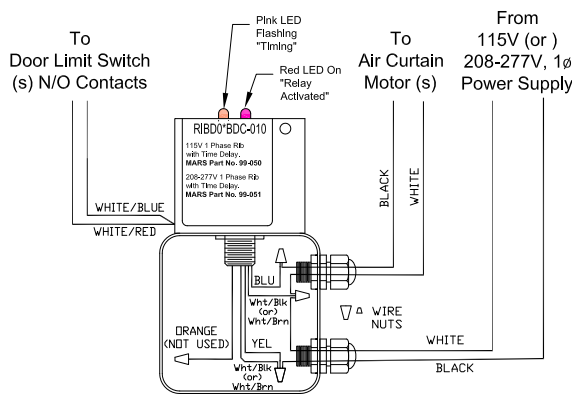
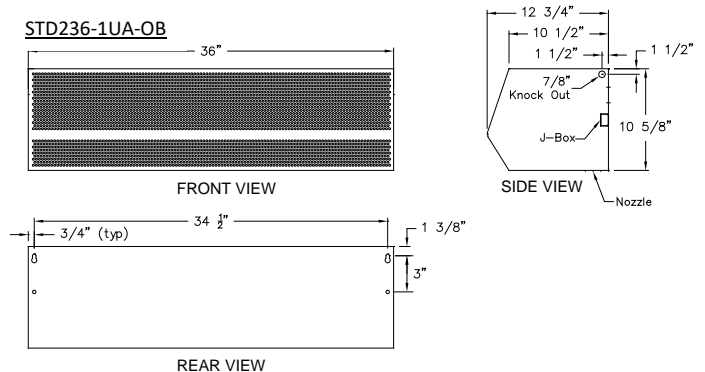
## Features:

- ❖ Repels infiltration of hot and humid air into the cooler
- ❖ Minimizes condensation and ice buildup in the cooler
- ❖ Reduces cooling load and electrical power consumption
- ❖ Walk-in cooler kit includes solid-state controls and non-thermal transfer mounting hardware
- ❖ Factory wired for easy field installation and wiring
- ❖ Customizable controls to suit field conditions
- ❖ Variable speed controller (LPV2 models only)
- ❖ 1/6 & 1/2 HP continuous duty motors
- ❖ ETL-certified to conform to UL 507 (US) and CSA 22.2 (Canada) standards (Indoor/Outdoor Use)
- ❖ Standard color is Obsidian Black
- ❖ Rust preventative electrostatic polyurethane powder coating
- ❖ 1 year parts warranty
- ❖ Freight included (FOB continental USA)
- ❖ Proudly Made in the USA



## Options

- ❖ Available in other voltages (208-230V, 1PH & 3PH, 460V, 3PH)
- ❖ Side Baffles
- ❖ VFD and 3 speed switch option (STD2 models only)
- ❖ Vertical mounting options
- ❖ Heated options for freezer applications
- ❖ Custom sequence of operation
- ❖ Freezer package (INS-FP)
  - Applicable with electric heated air curtain for freezer application
  - Minimizes icing, fogging and condensation at freezer entrance
  - Allows automatic control of heated air
  - Low voltage (24V) control
  - Remote wall mounted Humidistat
- ❖ Nozzle extension



NOTE: MARS AIR SYSTEMS, LLC reserves the right to change specifications and product design without notice. Such revisions do not entitle the buyer to corresponding changes, improvements, additions, or replacements for previously purchased equipment.