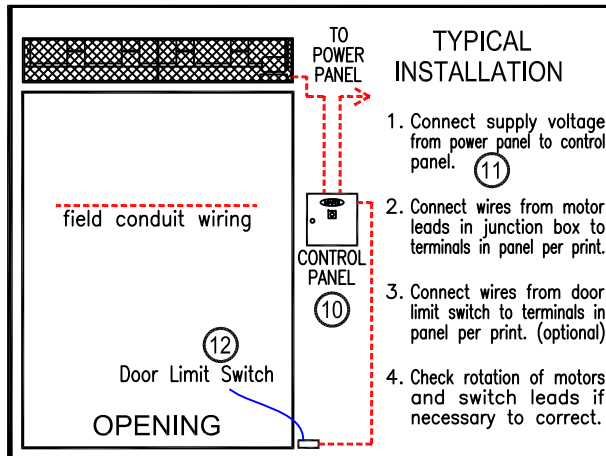


**NOTES:**

- ① This product is designed to comply with the National Electric Code (NEC).
- ② Unit shall be designed to accept the addition of a heater section without modification to the base unit.
- ③ High efficiency forward curved centrifugal blowers. ( 1 per 2 linear feet )
- ④ 3/4" mounting holes for top mounting (4), (2) on each end.
- ⑤ Cabinet is to be mounted from overhead and has sufficient strength for suspension from both ends without intermediate support.
- ⑥ All units have a self contained one piece cabinet, fire retardant and corrosion proof paint lock metal, double protected with baked on gray color rust proof electrostatic polyurethane powder coating.
- ⑦ Unit provided with adjustable sheaves and fixed pulleys, field adjustable to suit varying conditions.
- ⑧ Adjustable perforated volume dampers (2). Capable of reducing air velocity up to 50%.
- ⑨ Unit is to be installed such that air flow is not obstructed. Air discharge nozzle is adjustable with 40° sweep front to back.
- ⑩ Optional motor control panel. Overloads are factory preset. Standard procedure is to ship panel loose for remote mount.
- ⑪ Circuit protection as per (NEC) by others.
- ⑫ Optional door limit switch is field installed and is to be wired to control panel. Switch to be mounted such that air curtain turns on as door begins to open.

| MODEL NUMBER | NOZZLE WIDTH "A" | OVERALL WIDTH "B" | MOUNTING WIDTH "C" |
|--------------|------------------|-------------------|--------------------|
| BD30 96-1U   | 96"              | 107"              | 105 1/2"           |
| BD30 120-1U  | 120"             | 131"              | 129 1/2"           |
| BD30 144-1U  | 144"             | 155"              | 153 1/2"           |
| BD30 168-1U  | 168"             | 179"              | 177 1/2"           |
| BD30 192-1U  | 192"             | 203"              | 201 1/2"           |



|           |              |
|-----------|--------------|
| PROJECT   | Model No.:   |
| LOCATION  | Drawing No.: |
| ARCHITECT | Date         |
| ENGINEER  | Sheet of     |
|           | Drawn By:    |
|           | Checked By:  |

**MARS**®  
 AIR SYSTEMS

14716 S. BROADWAY • GARDENA, CA 90248 • USA  
 TEL: (310) 532-1555 • (800) 421-1266 • FAX: (310) 324-3030  
 Web Site: www.marsair.com • E-mail: info@marsair.com

**BD-30 WindGuard® BELT DRIVE INDUSTRIAL UNHEATED MODELS**

**JOB:**

**ARCHITECT/ENGINEER:**

**DRWG.:** \_\_\_\_\_

**CONTRACTOR:**

**SHEET** \_\_\_\_\_ **of** \_\_\_\_\_ **DATE:** \_\_\_\_\_

| MARK | WG<br>MODEL<br>NUMBER | NO.<br>REQ'D | LENGTH<br>(INCHES) | WEIGHT<br>(LBS) | MOTOR FAN DATA                 |                     |                     |      |                                  |                                  |                                  | dBA<br>Measured<br>10 ft.<br>from<br>Nozzle | REMARKS |
|------|-----------------------|--------------|--------------------|-----------------|--------------------------------|---------------------|---------------------|------|----------------------------------|----------------------------------|----------------------------------|---|---------|
|      |                       |              |                    |                 | MOTOR<br>HP @<br>1750<br>RPM** | VOLTS<br>&<br>PHASE | FLA*<br>THREE PHASE |      | Maximum<br>CFM**<br>at<br>Nozzle | Average<br>FPM**<br>at<br>Nozzle | Maximum<br>FPM**<br>at<br>Nozzle |   |         |
|      |                       |              |                    |                 |                                |                     | 208V/230V           | 460V |                                  |                                  |                                  |   |         |
|      | BD30 96-1U            |              | 107                | 800             | 1 @ 20                         |                     | 55.0/51.0           | 25.5 | 19200                            | 5600                             | 6950                             | 77  |         |
|      | BD30 120-1U           |              | 131                | 900             | 1 @ 25                         |                     | 65.0/60.0           | 30.0 | 24900                            | 5600                             | 6950                             | 78  |         |
|      | BD30 144-1U           |              | 155                | 1000            | 1 @ 30                         |                     | 78.0/71.0           | 35.5 | 30300                            | 5600                             | 6950                             | 79  |         |
|      | BD30 168-1U           |              | 179                | 1100            | 1 @ 30                         |                     | 78.0/71.0           | 35.5 | 33000                            | 5600                             | 6950                             | 79  |         |
|      | BD30 192-1U           |              | 203                | 1200            | 2 @ 20                         |                     | 110.0/102.0         | 51.0 | 38100                            | 5600                             | 6950                             | 80  |         |

**EQUIPMENT SPECIFICATIONS** – Standard Features

**GENERAL**

Air curtain shall be a Mars® Air Doors brand air curtain: Type WindGuard® Belt Drive Industrial Unheated Models.

**APPROVALS**

Air curtain shall meet the requirements of the National Electric Code.

**CABINET**

Cabinet shall be a self contained one piece housing, constructed of 16 gauge, 1½” square galvanized tube, cased with a minimum 14 gauge galvanized steel panels of sufficient rigidity to span its length with no noticeable deflection. Mounting holes shall be furnished on top ends of unit to allow for suspension from overhead. Discharge nozzle shall be 5 inches wide and shall distribute a uniform outlet air velocity pattern without the use of baffles or diverters. Variable volume dampers in the nozzle, field adjustable, may reduce velocity up to 50%. Nozzle shall be field adjustable with a 40° sweep front to back and shall contain no object such as vanes and louvers, to create turbulence. Housing shall be finished in a gray baked electrostatic polyurethane powder coating. Housing shall be designed to accept the addition of a heater section without modification to the base unit.

**MOTORS AND BLOWER WHEELS**

Motors shall be a standard totally enclosed fan cooled type suitable for continuous heavy duty operation. Motor shall be a belt drive type capable of maintaining and adjusting outlet air velocity through the use of adjustable motor base, sheaves, and pulleys. Motor shall be internally mounted in the air curtain cabinet to prevent damage and to eliminate the need for a belt guard, complying with OSHA requirements. Fixed pulley mechanism and adjustable motor base shall be provided for easy maintenance and replacement of motor belts. Blower wheel shall be forward curved cold rolled steel, direct coupled, dynamically balanced and furnished complete with blower wheel housing. Blower wheels shall not exceed 1500 RPM.

**ELECTRICAL WIRING**

A 4” x 4” watertight junction box shall be mounted on motor end unless otherwise specified.

**GUARANTEE**

Shall be 18 months on all parts.

\* - For Ampacity Multiply FLA X 1.25

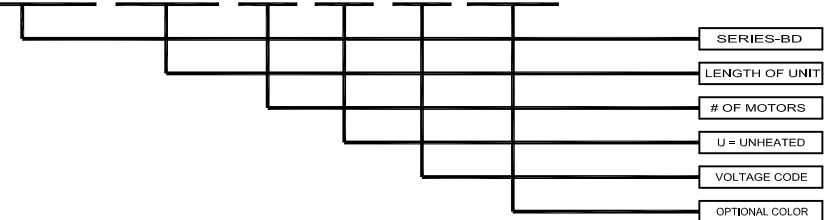
\*\* - 17% Reduction in Performance on units with 50Hz.

**ACCESSORIES**

Refer to the optional features and accessories page.

**EXAMPLE**

**BD30 168-1 U H-TS**



| SIZE     | VOLTAGE      | CODE |
|----------|--------------|------|
| 96"-192" | 208-230/3/60 | G    |
| 96"-192" | 460/3/60     | H    |
| 96"-192" | 575/3/60     | I    |

| COLOR           | CODE |
|-----------------|------|
| OBSIDIAN BLACK  | OB   |
| TITANIUM SILVER | TS   |
| PEARL WHITE     | PW   |
| SPARTAN BRONZE  | SB   |
| BATTLESHIP GRAY | BG   |

**MADE WITH PRIDE IN THE U.S.A.**

**BD-30 WindGuard® BELT DRIVE INDUSTRIAL UNHEATED MODELS**