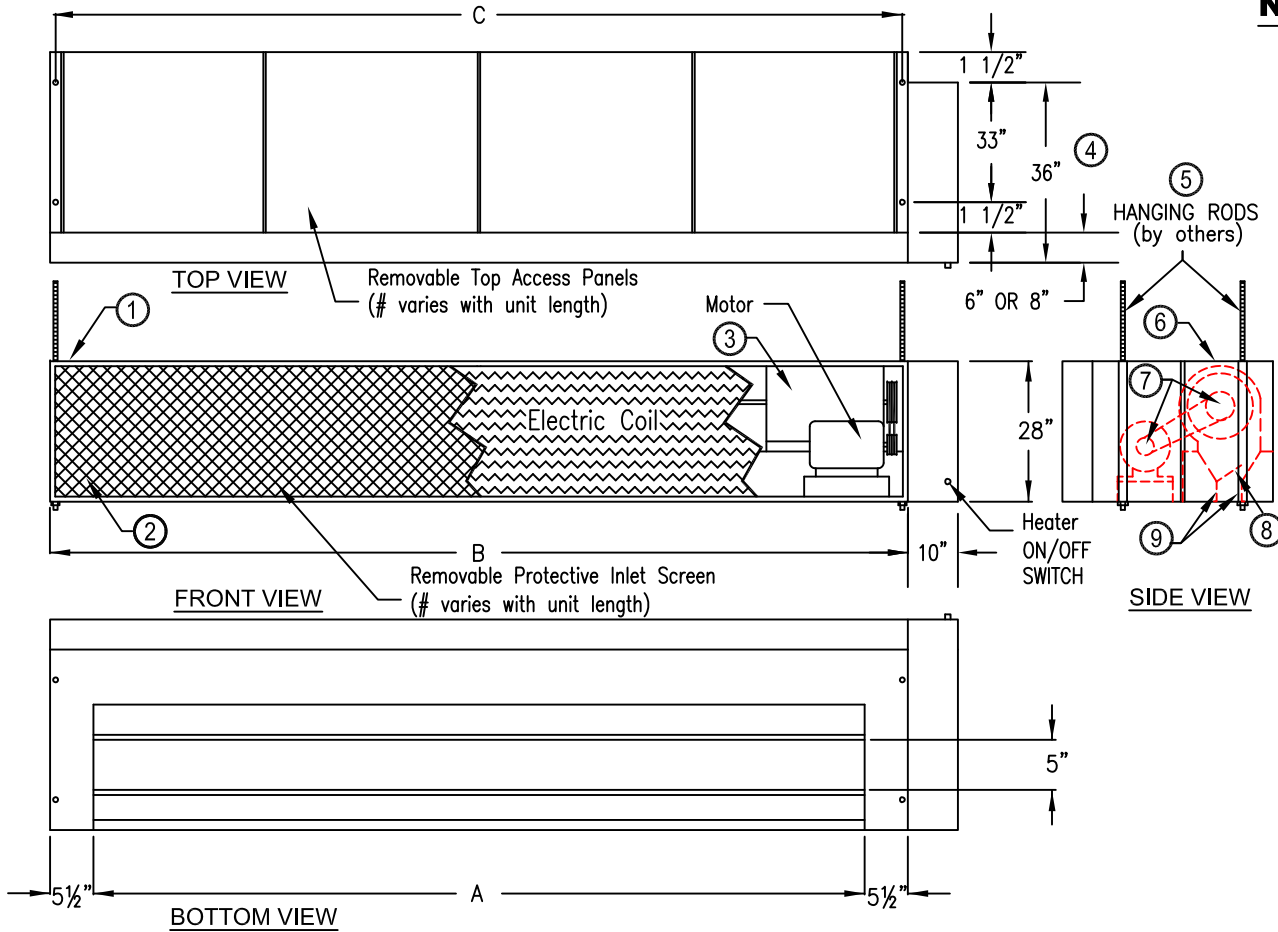
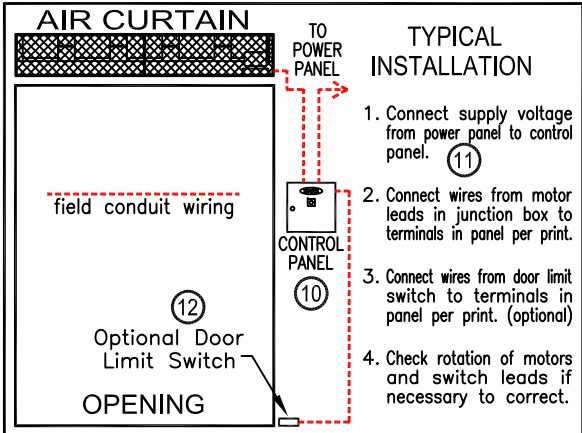


NOTES:

- ① This product is designed to comply with the National Electric Code (NEC).
- ② Unit shall be designed to accept the addition of a heater section without modification to the base unit.
- ③ High efficiency forward curved centrifugal blowers. (1 per 2 linear feet)
- ④ 3/4" mounting holes for top mounting (4), (2) on each end.
- ⑤ Cabinet is to be mounted from overhead and has sufficient strength for suspension from both ends without intermediate support.
- ⑥ All units have a self contained one piece cabinet, fire retardant and corrosion proof paint lock metal, double protected with baked on gray color, rust proof, electrostatic, polyurethane powder coating.
- ⑦ Unit provided with adjustable sheaves and pulleys, field adjustable to suit varying conditions.
- ⑧ Adjustable perforated volume dampers (2). Capable of reducing air velocity up to 50%.
- ⑨ Unit is to be installed such that air flow is not obstructed. Air discharge nozzle is adjustable with 40° sweep front to back.
- ⑩ Optional motor control panel. Overloads are factory preset. Standard procedure is to ship panel loose for remote mount.
- ⑪ Circuit protection as per (NEC) by others.
- ⑫ Optional door limit switch is field installed and is to be wired to control panel. Switch to be mounted such that air curtain turns on as door begins to open.



MODEL NUMBER	NOZZLE WIDTH A	OVERALL WIDTH B	MOUNTING WIDTH C
BD22 96-1E	96"	107"	105 1/2"
BD22 120-1E	120"	131"	129 1/2"
BD22 144-1E	144"	155"	153 1/2"
BD22 168-1E	168"	179"	177 1/2"
BD22 192-1E	192"	203"	201 1/2"



PROJECT	Model No.:
LOCATION	Drawing No.:
ARCHITECT	Date
ENGINEER	Sheet of
	Drawn By:
	Checked By:

MARS[®]
AIR SYSTEMS

14716 S. BROADWAY • GARDENA, CA 90248 • USA
TEL:(310) 532-1555 • (800) 421-1266 • FAX:(310) 324-3030
Web Site: www.marsair.com • E-mail:info@marsair.com

BD-22 WindGuard® BELT DRIVE INDUSTRIAL ELECTRIC HEATED MODELS

JOB: _____ **ARCHITECT/ENGINEER:** _____ **DRWG.:** _____
CONTRACTOR: _____ **SHEET** _____ **of** _____ **DATE:** _____

MARK	WG MODEL NUMBER	NO. REQ'D	LENGTH (INCHES)	WEIGHT (LBS)	MOTOR FAN & ELECTRIC COIL DATA							dBA Measured 10 ft. from Nozzle	REMARKS
					MOTOR HP @ 1750 RPM**	HEATER INPUT, KW	FLA* 3 Ø 460V***	TEMP RISE °F	Maximum CFM** at Nozzle	Average FPM** at Nozzle	Maximum FPM** at Nozzle		
	BD22 96-1E		107	850	1 @ 10	155	200	30	16250	4700	6000	75	
	BD22 120-1E		131	975	1 @ 15	195	250	30	20300	4700	6000	76	
	BD22 144-1E		155	1100	1 @ 15	230	298	30	24350	4700	6000	76	
	BD22 168-1E		179	1225	1 @ 20	270	352	30	28400	4700	6000	77	
	BD22 192-1E		203	1350	1 @ 20	310	400	30	32500	4700	6000	77	

EQUIPMENT SPECIFICATIONS - Standard Features

GENERAL

Air curtain shall be a Mars® Air Doors brand air curtain: Type WindGuard® Belt Drive Industrial Electric Heated.

APPROVALS

Air curtain shall meet the requirements of the National Electric Code (NEC).

CABINET

Cabinet shall be a self contained one piece housing, constructed of 16 gauge, 1½" square galvanized tube, cased with a minimum 14 gauge galvanized steel panels of sufficient rigidity to span its length with no noticeable deflection. Mounting holes shall be furnished on top ends of unit to allow for suspension from overhead. Discharge nozzle shall be 5 inches wide and shall distribute a uniform outlet air velocity pattern without the use of baffles or diverters. Variable volume dampers in the nozzle, field adjustable, may reduce velocity up to 50%. Nozzle shall be field adjustable with a 40° sweep front to back and shall contain no objects such as vanes and louvers, to create turbulence. Housing shall be finished in a gray baked, electrostatic, polyurethane powder coating. Housing shall be designed to accept the addition of a heater section without modification to the base unit.

MOTORS AND BLOWERS

Motors shall be a standard totally enclosed fan cooled type suitable for continuous heavy duty operation. Motor shall be a belt drive type capable of maintaining and adjusting outlet air velocity through the use of adjustable motor base, sheaves and pulleys. Motor shall be internally mounted in the air curtain cabinet to prevent damage and to eliminate the need for a belt guard, complying with OSHA requirements. Fixed pulley mechanism and adjustable motor base shall be provided for easy maintenance and replacement of motor belts. Blower wheel shall be forward curved cold rolled steel, direct coupled, dynamically balanced and furnished complete with blower wheel housing. Blower wheels shall not exceed 1500 RPM.

ELECTRIC HEATER COIL

The heating coils shall be open nickel chromium coil type for rapid temperature located on the air curtain intake opening. Thermal overload protection shall be provided, which shall disconnect the electric power from the heaters in the event of an overload.

ELECTRIC WIRING

Air curtain contain prewired control panel ready for power connection. Panel to be mounted on right hand side of unit unless other wise specified. Control panel adds 10 inches to unit's over all length and requires an additional 36 inches of clearance for access to panel. Terminal block provided inside panel.

GUARANTEE

Shall be 18 months on all parts.

* - For Ampacity Multiply FLA X 1.25

** - 17% Reduction in Performance on units with 50Hz.

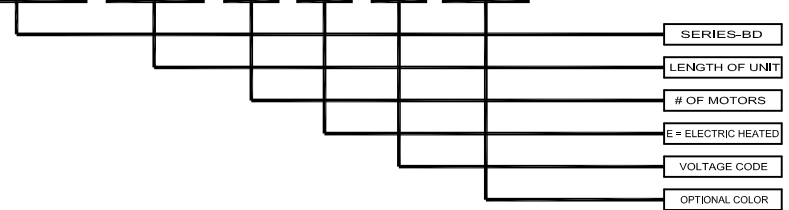
*** - For other voltages, consult factory

ACCESSORIES

Refer to the optional features and accessories page.

EXAMPLE

BD22 168-1 E G-TS



SIZE	VOLTAGE	CODE
96"-192"	208-230/3/60	G
96"-192"	460/3/60	H
96"-192"	575/3/60	I

COLOR	CODE
OBSIDIAN BLACK	OB
TITANIUM SILVER	TS
PEARL WHITE	PW
SPARTAN BRONZE	SB
BATTLESHIP GRAY	BG

MADE WITH PRIDE IN THE U.S.A.

BD-22 WindGuard® BELT DRIVE INDUSTRIAL ELECTRIC HEATED MODELS