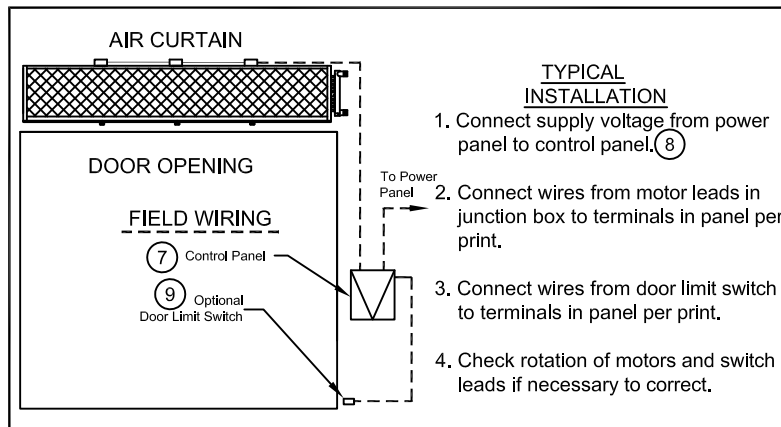


- ① This product is designed to comply with National Electrical Code (NEC), and is CSA Listed.
- ② (4) 5/8" diameter mounting holes (2) on each end for overhead mounting on hanging rods.
- ③ All cabinets welded in one piece, fire retardant and corrosion proof paint lock metal, double protected with baked on gray color, rust preventive electrostatic polyurethane powder coating.
- ④ One watertight electrical junction box per motor mounted on top center of each motor.
- ⑤ Coil shown as hot water. Same end connection standard. Specify for other.
- ⑥ Unit is to be installed such that air flow is unobstructed. Air discharge grille containing adjustable ( $\pm 40^\circ$ ) aluminum airfoil shaped vanes.
- ⑦ Optional motor control panel. Overloads are factory preset. Standard procedure for the control panel to be shipped loose for remote mounting. Control panel can be factory mounted & wired on unit. Specify left or right side mounting.
- ⑧ Circuit Protection as per NEC by others.
- ⑨ Optional door limit switch is field installed and is to be wired to the control panel. Switch is to be mounted such that air curtain turns on as soon as door begins to open.



LR92218-1

MODEL NUMBER	MOTORS		DISCHARGE LENGTH "A"	UNIT LENGTH "B"	MOUNTING CENTERS "C"
	NO	HP			
WMI48-1*	1	2	48"	51"	49 1/2"
WMI60-1*	1	3	60"	63"	61 1/2"
WMI72-1*	1	3	72"	75"	73 1/2"
WMI96-2*	2	2	96"	99"	97 1/2"
WMI108-2*	2	3	108"	111"	109 1/2"
WMI120-2*	2	3	120"	123"	121 1/2"
WMI144-2*	2	3	144"	147"	145 1/2"
WMI168-3*	3	3	168"	171"	169 1/2"
WMI180-3*	3	3	180"	183"	181 1/2"
WMI192-4*	4	2	192"	195"	193 1/2"
WMI216-3*	3	3	216"	219"	217 1/2"



PROJECT	Model No.:
LOCATION	Drawing No.:
ARCHITECT	Date
ENGINEER	Sheet of
	Drawn By:
	Checked By:

**MARS**<sup>®</sup>  
AIR SYSTEMS

14716 S. BROADWAY • GARDENA, CA 90248 • USA  
TEL:(310) 532-1555 • (800) 421-1266 • FAX:(310) 324-3030  
Web Site: www.marsair.com • E-mail: info@marsair.com

# WMI WIND STOPPING 14 STEAM/HOT WATER HEATED MODELS

MH2FX 6/18/10 NT

**JOB:**

**ARCHITECT/ENGINEER:**  
**CONTRACTOR:**

**DWG.:** \_\_\_\_\_  
**SHEET** \_\_\_ of \_\_\_ **DATE:** \_\_\_\_\_

MARK	MODEL ①	NO. REQ'D	LENGTH	WEIGHT		MOTOR FAN DATA								HEATING CAPACITY OF COILS								REMARKS	
				UNIT & SINGLE ROW COIL	UNIT & DOUBLE ROW COIL	MOTOR HP 850 RPM	VOLTAGE	FLA*				dBA Measured 10 ft. from Nozzle	Max FPM @ Discharge	Max CFM @ Discharge	STEAM ②				HOT WATER ②				
								THREE PHASE							ONE ROW	TWO ROW	ONE ROW	TWO ROW	ONE ROW	TWO ROW	ONE ROW		TWO ROW
								208V	230V	460V	575V												
	WMI48-1*		51"	375	420	2		8.6	7.8	3.9	3	74	5500	4577	110	151	45	65	149	191	35	47	
	WMI60-1*		63"	400	450	3		13	11	5.9	4.5	74	5200	4737	137	188	45	65	180	229	35	47	
	WMI72-1*		75"	460	510	3		13	11	5.9	4.5	74	5800	6711	164	225	45	65	217	274	35	47	
	WMI96-2*		99"	600	650	(2)-2		17.2	15.6	7.8	6	78	5500	9154	212	301	45	65	268	335	35	47	
	WMI108-2*		111"	660	710	(2)-3		26	22	17.7	9	78	4900	9314	228	338	45	65	286	355	35	47	
	WMI120-2*		123"	700	750	(2)-3		26	22	17.7	9	78	5200	9474	237	366	45	65	315	389	35	47	
	WMI144-2*		147"	800	850	(2)-3		26	22	17.7	9	78	5800	13422	330	452	45	65	349	449	35	47	
	WMI168-3*		171"	975	1025	(3)-3		39	33	17.7	9	83	4900	15060	380	527	45	65	380	482	35	47	
	WMI180-3*		183"	1000	1050	(3)-3		39	33	17.7	9	83	5200	14211	402	563	45	65	397	500	35	47	
	WMI192-4*		195"	1100	1150	(4)-2		34.4	31.2	15.6	12	83	5500	18308	212	301	45	65	268	335	35	47	
	WMI216-3*		219"	1200	1250	(3)-3		39	33	17.7	9	83	5800	20133	228	338	45	65	286	355	35	47	

**NOTES:**

- ① \* When specifying one row design, use "Y" for steam and "W" for hot water. For two row design, use "X" for hot water. See code chart below.
- ② MBH and air temperature rise based on 70°F ambient air and (5 psi steam) or (200°F hot water).

**EQUIPMENT SPECIFICATION - Standard Features**

**GENERAL:**

Air curtain shall be a MARS® WMI Wind Stopping 14 Steam/Hot Water model.

**APPROVALS**

Air curtain shall be Canadian Standards Association Certified (CSA), and meet all the requirements of the National Electric Code (NEC).

**CABINET**

Heavy gauge galvanized steel housing, designed as box beams for outstanding structural strength and the ability to span openings to thirty feet without intermediate support. Units have a baked gray electrostatic polyurethane powder coating. Scrolls have a split housing design, that provides easy access to fans and motors. The scroll is designed to accumulate air and guide it to the discharge outlet for efficient air distribution. Air curtain has an expanded metal intake screen, which allows maximum air flow into the unit. Unit has adjustable lockable discharge vanes with specially made air foil blades, allows you to adjust the blades ±45° for the most efficient air flow.

**MOTORS & FAN WHEELS**

Motor(s) shall be totally enclosed air over (TEAO) type suitable for continuous heavy duty, all angle operation. Construction shall include sealed lifetime pre-lubricated ball bearings, resilient mounted and have double extended shaft and direct drive. With heavy duty centrifugal blower wheels with brazed hubs generate a powerful, controlled air flow, while maintaining quiet operation. Each air curtain is fitted with statically balanced blower wheels.

**GUARANTEE**

Shall be 18 months on all parts.

\* - For Ampacity Multiply FLA X 1.25

**COIL CONSTRUCTION FOR BOTH HOT WATER & STEAM**

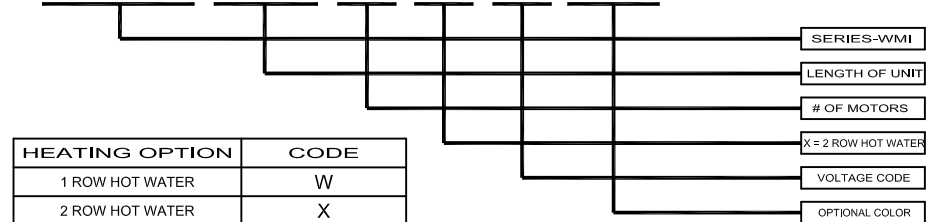
Coils shall be constructed of .035" heavy tube wall x 5/8" OD seamless copper tubing with die formed aluminum fins. Tubes shall be arranged in a staggered pattern in the direction of air flow. Casings shall be of no less than 16 gauge galvanized steel with tube holes formed with extruded collars. Tubes shall be mechanically expanded into fins to assure a uniform pressure bond throughout the entire length of each tube. Manifolds shall be of heavy seamless copper construction. All joints shall be brazed with high temperature silver brazing alloy. Fittings shall be of wrought copper or similar construction such that the entire fluid circuit shall be of compatible nonferrous materials. Manifold shall be fitted with 1/4" vent or drain.

**ACCESSORIES**

Refer to the optional features and accessories page.

**EXAMPLE**

**WMI 168-3 X G-TS**



HEATING OPTION	CODE
1 ROW HOT WATER	W
2 ROW HOT WATER	X
1 ROW STEAM	Y

SIZE	VOLTAGE	CODE
48"-216"	208-230/3/60	G
48"-216"	460/3/60	H
48"-216"	575/3/60	I

COLOR	CODE
OBSIDIAN BLACK	OB
TITANIUM SILVER	TS
PEARL WHITE	PW
SPARTAN BRONZE	SB
BATTLESHIP GRAY	BG

**MADE WITH PRIDE IN THE U.S.A.**

**WMI WIND STOPPING 14 STEAM/HOT WATER HEATED MODELS**