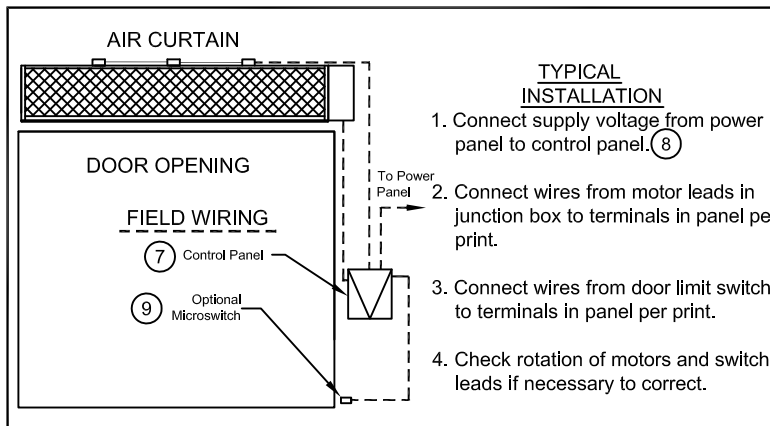


- ① This product is designed to comply with National Electrical Code (NEC), and CSA Certified.
- ② (4) 5/8" diameter mounting holes (2) on each end for overhead mounting on hanging rods.
- ③ All cabinets welded in one piece, fire retardant and corrosion proof paint lock metal, double protected with baked on gray color, rust preventive electrostatic polyurethane powder coating.
- ④ One watertight electrical junction box per motor mounted on top center of each motor.
- ⑤ Electric coil shown mounted with control panel on right side. Optional is mounted on left side or remote control, specify mounting location.
- ⑥ Unit is to be installed such that air flow is unobstructed. Air discharge grille containing adjustable ( $\pm 45^\circ$ ) aluminum airfoil shaped vanes.
- ⑦ Optional motor control panel. Overloads are factory preset. Standard procedure is the control panel shipped loose for remote mounting. Control panel can be factory mounted & wired on either side of unit. Please specify left or right.
- ⑧ Circuit Protection as per NEC by others.
- ⑨ Optional door limit switch is field installed and is to be wired to the control panel. Switch is to be mounted such that air curtain turns on as soon as door begins to open.



LR92218-1

MODEL NUMBER	MOTORS		DISCHARGE LENGTH "A"	UNIT LENGTH "B"	MOUNTING CENTERS "C"
	NO	HP			
WMI48-1E	1	2	48"	51"	49 1/2"
WMI60-1E	1	3	60"	63"	61 1/2"
WMI72-1E	1	3	72"	75"	73 1/2"
WMI96-2E	2	2	96"	99"	97 1/2"
WMI108-2E	2	3	108"	111"	109 1/2"
WMI120-2E	2	3	120"	123"	121 1/2"
WMI144-2E	2	3	144"	147"	145 1/2"
WMI168-3E	3	3	168"	171"	169 1/2"
WMI180-3E	3	3	180"	183"	181 1/2"
WMI192-4E	4	2	192"	195"	193 1/2"



PROJECT	Model No.:
LOCATION	Drawing No.:
ARCHITECT	Date
ENGINEER	Sheet of
	Drawn By:
	Checked By:

**MARS**  
AIR SYSTEMS

14716 S. BROADWAY • GARDENA, CA 90248 • USA  
TEL: (310) 532-1555 • (800) 421-1266 • FAX: (310) 324-3030  
Web Site: www.marsair.com • E-mail: info@marsair.com

**WMI WIND STOPPING 14 ELECTRIC HEATED MODELS**

JOB:

**ARCHITECT/ENGINEER:  
CONTRACTOR:**

**DWG.:** \_\_\_\_\_  
**SHEET** \_\_\_ **of** \_\_\_ **DATE:** \_\_\_\_\_

MARK	MODEL	No. REQ'D	LENGTH	WEIGHT LBS	MOTOR FAN DATA				HEATING COIL			REMARKS
					MOTOR HP	FLA* 3 Ø 460V**	MAX FPM DISCHARGE	MAX CFM DISCHARGE	kW	FLA* 3 Ø 460V**	TEMP RISE °F	
	WMI48-1E		51"	150	2	4	5500	4577	38	48	26	
	WMI60-1E		63"	200	3	6	5200	4737	39	49	26	
	WMI72-1E		75"	300	3	6	5800	6711	55	69	26	
	WMI96-2E		99"	400	(2) - 2	8	5500	9154	75	94	26	
	WMI108-2E		111"	450	(2) - 3	12	4900	9314	77	97	26	
	WMI120-2E		123"	500	(2) - 3	12	5200	9474	78	99	26	
	WMI144-2E		147"	600	(2) - 3	12	5800	13422	110	138	26	
	WMI168-3E		171"	675	(3) - 3	18	4900	15060	124	156	26	
	WMI180-3E		183"	725	(3) - 3	18	5200	14211	117	147	26	
	WMI192-4E		195"	800	(4) - 2	16	5500	18308	151	190	26	

**EQUIPMENT SPECIFICATION - Standard Features**

**GENERAL:**

Air curtain shall be a MARS Wind Stopping 14 Electric Heated model.

**APPROVALS**

Air curtain shall meet all the requirements of the National Electric Code (NEC), and be Canadian Standards Association, (CSA) certified.

**CABINET**

Heavy gauge galvanized steel housing, designed as box beams for outstanding structural strength and the ability to span openings to thirty feet without intermediate support. Units have a baked gray electrostatic polyurethane powder coating. Scrolls have a split housing design, that provides easy access to fans and motors. The scroll is designed to accumulate air and guide it to the discharge outlet for efficient air distribution. Air curtain has an expanded metal intake screen, which allows maximum air flow into the unit. Unit has adjustable lockable discharge vanes with specially made air foil blades, allows you to adjust the blades ±40° for the most efficient air flow.

**MOTORS & FAN WHEELS**

Motor(s) shall be totally enclosed air over (TEAO) type suitable for continuous heavy duty, all angle operation. Construction shall include sealed lifetime pre-lubricated ball bearings, resilient mounted and have double extended shaft and direct drive. With heavy duty centrifugal blower wheels with brazed hubs generate a powerful, controlled air flow, while maintaining quiet operation. Each air curtain is fitted with statically balanced blower wheels.

**Electrical Wiring**

All motor wiring is terminated in termination box at end of electric coil (remote panel) or (mounted control panel) via water tight J-boxes (1) per motor and conduit.

\* - For Ampacity Multiply FLA X 1.25

\*\* - For other voltages, consult factory

**COIL CONSTRUCTION**

Electric Heaters are U.L. listed for "Zero Clearance" and have the following features: magnetic contactors, automatic limit thermostat, manual re-set limit thermostat, unfused disconnect, Air pressure switch, fused control transformer (250va). Heater is fabricated in a metal flanged construction, attached to heaters control panel.

**GUARANTEE**

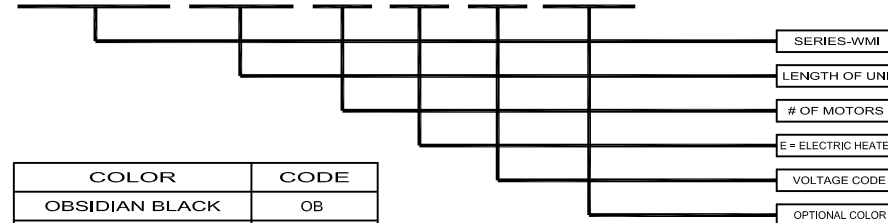
Shall be 18 months on all parts.

**ACCESSORIES**

Refer to the optional features and accessories page.

**EXAMPLE**

**WMI 168 - 3 E G - TS**



COLOR	CODE
OBSIDIAN BLACK	OB
TITANIUM SILVER	TS
PEARL WHITE	PW
SPARTAN BRONZE	SB
BATTLESHIP GRAY	BG

SIZE	VOLTAGE	CODE
48"-192"	208-230/3/60	G
48"-192"	460/3/60	H
48"-192"	575/3/60	I

**MADE WITH PRIDE IN THE U.S.A.**

**WMI WIND STOPPING 14 ELECTRIC HEATED MODELS**