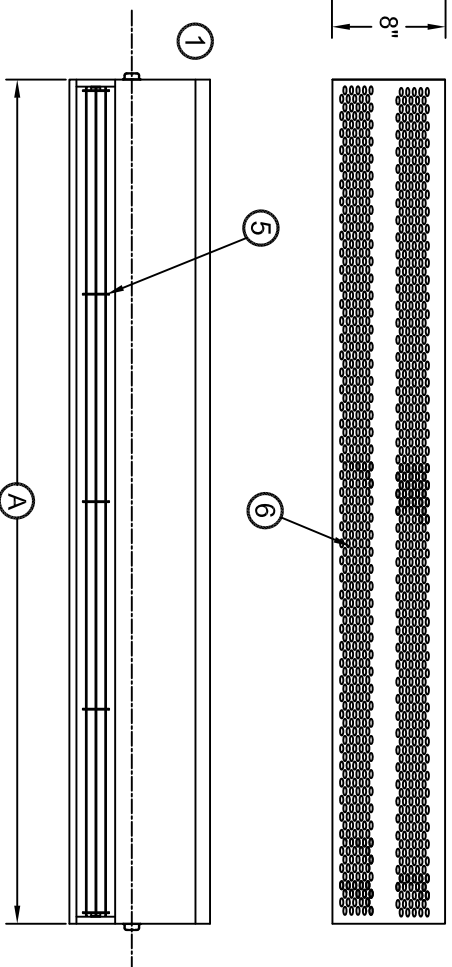
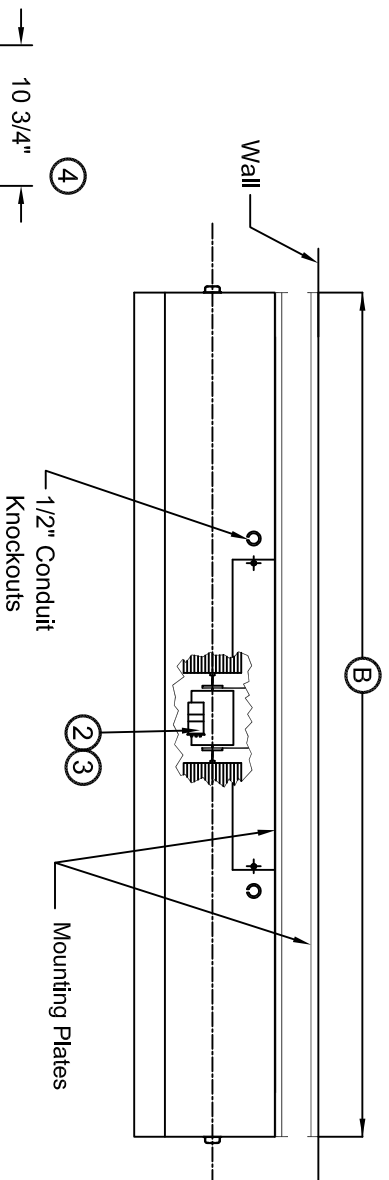


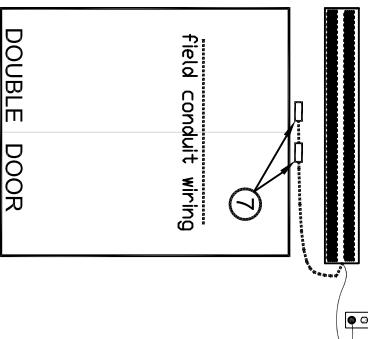
NOTES:

- ① This product is designed to meet the National Electric Code (NEC) and is ETL Sanitation Listed.
- ② Continuous duty, direct drive, double shaft motors with automatic thermal overload protection. Overload protects motor from burnout, minimizing maintenance costs. Motor connected with an 3' cord, three conductor cord and plug.
- ③ Blower wheels are rust proof and dynamically balanced to provide quiet operation, while maintaining high air velocity.
- ④ Low profile appearance. Overall height is 8" and overall depth is 10 3/4".
- ⑤ Air directional vanes, with 40° sweep front to back, compensates for drafts.
- ⑥ All units have a self contained one piece cabinet, fire retardant and corrosion proof paint lock metal double protected with Spartan Bronze rust preventive electrostatic powdercoating.
- ⑦ Normally closed door limit switch(s) is optional and field installed. Switch to be mounted so the air curtain turns on as the door begins to open. Two door limit switches shown for double door. For single door (1) door limit switch will be installed.



MODEL NUMBER	UNIT LENGTH (A)	MOUNTING BRACKET LENGTH (B)
SLN30	30"	30"
SLN36	36"	36"
SLN42	42"	42"
SLN48	48"	48"
SLN60	60"	60"
SLN72	72"	72"
SLN84-2	86"	86"
SLN96-2	98"	98"
SLN108-2	110"	110"
SLN120-2	122"	122"
SLN144-2	146"	146"

AIR CURTAIN



TYPICAL INSTALLATION

1. Install mounting plate using the pre-drilled holes.
2. Securely attach cabinet to mounting plate using tabs as guides, when fully inserted secure with (2) #10-32 Pan Hd. **CAUTION:** Unit to be mounted with the lowest moving part at 7 Ft MAX above floor or grade level.
3. Install optional door limit switch(es) to door header. ⑦
4. Plug in unit using the 3 wire cord/plug supplied.

PROJECT	MODEL NO.
LOCATION	DRAWING NO.
ARCHITECT	DATE
ENGINEER	SHEET OF
	DRAWN BY
	CHECKED BY
	PROJECT NO.



NSF / ANS1 37



A DIVISION OF MARS SALES COMPANY
 14716 S. BROADWAY, GARDENA, CA 90248
 PHONE: (310) 532-1555 FAX: (310) 324-3030
 www.dynaforce.com
 dynalrfo@marsalr.com

JOB:

ARCHITECT/ENGINEER:

DRWG.:

CONTRACTOR:

SHEET _____ **of** _____ **DATE:** _____

MOTOR FAN DATA

MARK	MODEL NUMBER	NUMBER REQ'D	OVERALL LENGTH (INCHES)	NUMBER OF MOTORS	WEIGHT (LBS)	VOLTAGE	FLA (AMPACITY) SINGLE PHASE		Max FPM at Nozzle	Max CFM at Nozzle	dBA Measured 10 ft. from Nozzle	REMARKS
							115V	208V 240V				
	SLN30		30	(1) 1/6	28	2.4 (3.0)	.9 (1.2)	1800	750	49		
	SLN36		36	(1) 1/6	34	2.4 (3.0)	.9 (1.2)	1800	900	49		
	SLN42		42	(1) 1/6	40	2.4 (3.0)	.9 (1.2)	1800	1050	50		
	SLN48		48	(1) 1/6	45	2.4 (3.0)	.9 (1.2)	1800	1200	52		
	SLN60		60	(1) 1/6	55	2.6 (3.4)	1.3 (1.7)	1800	1500	53		
	SLN72		72	(1) 1/6	68	2.6 (3.4)	1.3 (1.7)	1800	1800	53		
	SLN84-2		86	(2) 1/6	80	4.8 (6.0)	1.8 (2.4)	1800	2100	51		
	SLN96-2		98	(2) 1/6	92	4.8 (6.0)	1.8 (2.4)	1800	2400	53		
	SLN108-2		110	(2) 1/6	100	5.0 (6.3)	2.2 (2.8)	1800	2700	54		
	SLN120-2		122	(2) 1/6	112	5.2 (6.6)	2.6 (3.4)	1800	3000	54		
	SLN144-2		146	(2) 1/6	135	5.2 (6.6)	2.6 (3.4)	1800	3600	54		

EQUIPMENT SPECIFICATIONS – Standard Features

GENERAL

Air curtain shall be a Dynaforce brand air curtain: SlimLine NSF Commercial unheated.

APPROVALS

Air curtain shall meet the requirements of the National Electric Code. (N.E.C.) and ETL certified for US & Canada and meet NSF/ANSI 37.

CABINET

Cabinet shall be a self contained one piece housing with sufficient strength for fastening to wall on both ends without intermediate support. Cabinet constructed of fire retardant, corrosion proof paint lock metal and double protected with Spartan Bronze baked rust preventative electrostatic polyurethane powder coating. Discharge air outlet nozzle is internal wedge shaped containing adjustable air direction aluminum vanes with 40° sweep front to back. Motor & Fans are easily accessible for maintenance.

MOTORS AND BLOWER WHEELS

Motor(s) shall be totally enclosed air over (TEAO) type suitable for continuous heavy duty, all angle operation. Construction shall include sealed lifetime pre-lubricated ball bearings, resilient mounted and protected by an automatic reset thermal overload switch. Motor(s) to have double extended shaft and direct drive, cross flow blower wheels.

ELECTRICAL WIRING

Unit supplied with 1/2" Conduit Knockouts.

GUARANTEE

Shall be five years on all parts.

An equipment specification can be prepared by combining the standard features with the checked boxes below indicating the selection of the optional features.

OPTIONAL FEATURES

When checked below, the air curtain will be supplied with the following special features.

- Washable Aluminum Filter(s) Located Behind Intake Grille (Available for Drive Thru Window Applications Only.)
- Indicated by (–F) after the model number.
- Combination door limit switch (20 amp) for automatic on/off control. turns air curtain on when door is opened and off when door is closed. To be field installed.

Optional Colors

- Pearl White
- Titanium Silver
- Obsidian Black

MADE WITH PRIDE IN THE U.S.A.

Slimline NSF COMMERCIAL MODELS