

# Solid State (RIB) Control Packages



Commercial and Industrial Models

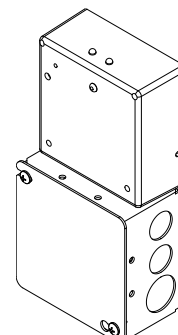
atmosphere is everything

14716 S. BROADWAY, GARDENA, CA 90248 • Ph: (310)532-1555 Fax: (310)-532-3030 • [www.marsair.com](http://www.marsair.com)  
© Copyright Mars Air Systems, LLC 2014

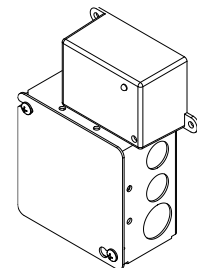
	Voltage	Motor HP Rating	Door Switch	Part Number	Description
No Time Delay	<b>Single Phase</b>				
	115v 1Ø	1/2 HP	99-018	J0023	Kit, Controller, Commercial, No TD, 115v/1Ø, Mag Reed Sw, Surf Mntd (99-018), 1/2HP max
			99-125	J0036	Kit, Controller, Industrial, No TD, 115v/1Ø, Mag Reed Sw, Surf Mntd (99-125), 1/2HP max
			99-124	J0100	Kit, Controller, Industrial, No TD, 115v/1Ø, Mag Reed Sw, Floor Mntd (99-124), 1/2HP max
		1 HP	99-018	J0705	Kit, Controller, Commercial, No TD, 115v/1Ø, Mag Reed Sw, Surf Mntd (99-018), 1HP max
			99-125	J0722	Kit, Controller, Industrial, No TD, 115v/1Ø, Mag Reed Sw, Surf Mntd (99-125), 1HP max
			99-124	J0726	Kit, Controller, Industrial, No TD, 115v/1Ø, Mag Reed Sw, Floor Mntd (99-124), 1HP max
	208-230v 1Ø	1/2 HP	99-018	J0024	Kit, Controller, Commercial, No TD, 208-230v/1Ø, Mag Reed Sw, Surf Mntd (99-018), 1/2HP max
			99-125	J0037	Kit, Controller, Industrial, No TD, 208-230v/1Ø, Mag Reed Sw, Surf Mntd (99-125), 1/2HP max
			99-124	J0104	Kit, Controller, Industrial, No TD, 208-230v/1Ø, Mag Reed Sw, Floor Mntd (99-124), 1/2HP max
		1 HP	99-018	J0706	Kit, Controller, Commercial, No TD, 208-230v/1Ø, Mag Reed Sw, Surf Mntd (99-018), 1HP max
			99-125	J0723	Kit, Controller, Industrial, No TD, 208-230v/1Ø, Mag Reed Sw, Surf Mntd (99-125), 1HP max
			99-124	J0727	Kit, Controller, Industrial, No TD, 208-230v/1Ø, Mag Reed Sw, Floor Mntd (99-124), 1HP max
	208-230v 3Ø	1 HP	99-018	J0760	Kit, Controller, Commercial, No TD, 208-230v/3Ø, Mag Reed Sw, Surf Mntd (99-018), 1HP max
			99-014	J0763	Kit, Controller, Commercial, No TD, 208-230v/3Ø, Limit Sw, Roller/Plunger (99-014), 1HP max
99-125			J0761	Kit, Controller, Industrial, No TD, 208-230v/3Ø, Mag Reed Sw, Surf Mntd (99-125), 1HP max	
99-124			J0762	Kit, Controller, Industrial, No TD, 208-230v/3Ø, Mag Reed Sw, Floor Mntd (99-124), 1HP max	
Adjustable Time Delay	<b>Single Phase</b>				
	115v 1Ø	1/2 HP	99-018	J0021	Kit, Controller, Commercial, Adj TD (6s-20m), 115v/1Ø, Mag Reed Sw, Surf Mntd (99-018), 1/2HP max
			99-014	J0028	Kit, Controller, Commercial, Adj TD (6s-20m), 115v/1Ø, Limit Sw, Roller/Plunger (99-014), 1/2HP max
			99-125	J0038	Kit, Controller, Industrial, Adj TD (6s-20m), 115v/1Ø, Mag Reed Sw, Surf Mntd (99-125), 1/2HP max
		1 HP	99-124	J0102	Kit, Controller, Industrial, Adj TD (6s-20m), 115v/1Ø, Mag Reed Sw, Floor Mntd (99-124), 1/2HP max
			99-018	J0703	Kit, Controller, Commercial, Adj TD (6s-20m), 115v/1Ø, Mag Reed Sw, Surf Mntd (99-018), 1HP max
			99-014	J0708	Kit, Controller, Commercial, Adj TD (6s-20m), 115v/1Ø, Limit Sw, Roller/Plunger (99-014), 1HP max
	208-230v 1Ø	1/2 HP	99-125	J0720	Kit, Controller, Industrial, Adj TD (6s-20m), 115v/1Ø, Mag Reed Sw, Surf Mntd (99-125), 1HP max
			99-124	J0724	Kit, Controller, Industrial, Adj TD (6s-20m), 115v/1Ø, Mag Reed Sw, Floor Mntd (99-124), 1HP max
			99-018	J0022	Kit, Controller, Commercial, Adj TD (6s-20m), 208-230v/1Ø, Mag Reed Sw, Surf Mntd (99-018), 1/2HP max
		1 HP	99-014	J0029	Kit, Controller, Commercial, Adj TD (6s-20m), 208-230v/1Ø, Limit Sw, Roller/Plunger (99-014), 1/2HP max
			99-125	J0042	Kit, Controller, Industrial, Adj TD (6s-20m), 208-230v/1Ø, Mag Reed Sw, Surf Mntd (99-125), 1/2HP max
			99-124	J0106	Kit, Controller, Industrial, Adj TD (6s-20m), 208-230v/1Ø, Mag Reed Sw, Floor Mntd (99-124), 1/2HP max
	208-230v 3Ø	1 HP	99-018	J0704	Kit, Controller, Commercial, Adj TD (6s-20m), 208-230v/1Ø, Mag Reed Sw, Surf Mntd (99-018), 1HP max
			99-014	J0709	Kit, Controller, Commercial, Adj TD (6s-20m), 208-230v/1Ø, Limit Sw, Roller/Plunger (99-014), 1HP max
99-125			J0721	Kit, Controller, Industrial, Adj TD (6s-20m), 208-230v/1Ø, Mag Reed Sw, Surf Mntd (99-125), 1HP max	
99-124			J0725	Kit, Controller, Industrial, Adj TD (6s-20m), 208-230v/1Ø, Mag Reed Sw, Floor Mntd (99-124), 1HP max	
<b>Three Phase</b>					
208-230v 3Ø	1 HP	99-018	J0764	Kit, Controller, Commercial, Adj TD (6s-20m), 208-230v/3Ø, Mag Reed Sw, Surf Mntd (99-018), 1HP max	
		99-014	J0767	Kit, Controller, Commercial, Adj TD (6s-20m), 208-230v/3Ø, Limit Sw, Roller/Plunger (99-014), 1HP max	
		99-125	J0765	Kit, Controller, Industrial, Adj TD (6s-20m), 208-230v/3Ø, Mag Reed Sw, Surf Mntd (99-125), 1HP max	
		99-124	J0766	Kit, Controller, Industrial, Adj TD (6s-20m), 208-230v/3Ø, Mag Reed Sw, Floor Mntd (99-124), 1HP max	

**Features:**

- ❖ UR (UL Recognized) and rated for NEMA 1 (field installed by others)
- ❖ Solid State Controller package allows the air curtain to work with mechanical or magnetic door switch
- ❖ Time delay option – Field adjustable (6s-20m). Time delay keeps the air curtains ON after door closes.
- ❖ Used when low voltage automatic control of an air curtain(s) is required
- ❖ Compact control package for limited space installations
- ❖ Lightweight and easy to install
- ❖ 1 year parts warranty



**Controller with Adjustable Time Delay**  
(Controller part # 99-050 & 99-051)



**Controller without Time Delay**  
(Controller part # 99-052 & 99-053)

NOTE: MARS AIR SYSTEMS, LLC reserves the right to change specifications and product design without notice. Such revisions do not entitle the buyer to corresponding changes, improvements, additions, or replacements for previously purchased equipment.

# Solid State (RIB) Control Packages



## Commercial and Industrial Models

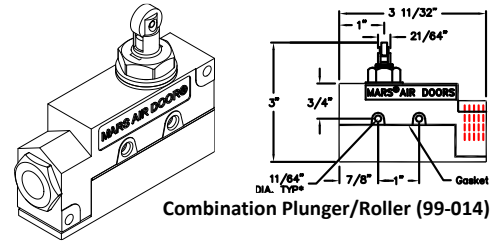
atmosphere is everything

14716 S. BROADWAY, GARDENA, CA 90248 • Ph: (310)532-1555 Fax: (310)-532-3030 • [www.marsair.com](http://www.marsair.com)  
© Copyright Mars Air Systems, LLC 2014

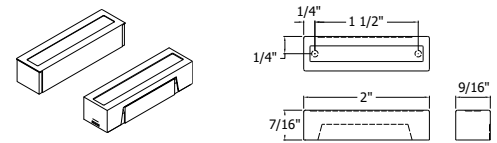
### Commercial Type Control Packages

\*Note: Do not use a fastener larger than a #6 sheet metal screw or a #8 Machine screw to mount this door limit switch. Forcing larger screws through the mounting holes destroys the switch and voids the warranty.

- Combination Plunger/Roller Switch (99-014)
  - Rated for NEMA 1 applications (field installed by others)
  - Rated up to 250Vac
  - Maximum amperage rating is 20A
  - Three terminals provided (field wired by others)
  - Single pole (1P) switch with normally closed (NC) and normally opened (NO) contacts
  - Requires less than 1/8" of travel and 2 lbs. of force on plunger to activate switch
- Surface Mounted Magnetic Reed Switch (99-018)
  - Rated for NEMA 1 applications (field installed by others)
  - Rated up to 24Vac
  - Maximum amperage rating is 1/2A
  - Three terminals provided (field wired by others)
  - Single pole (1P) switch with normally closed (NC) and normally opened (NO) contacts
  - Maximum acceptable gap of 1/8" distance (commercial) between magnet and reed to activate switch
  - Durable white plastic construction
  - Reed and Magnet have sleek compact design



Combination Plunger/Roller (99-014)



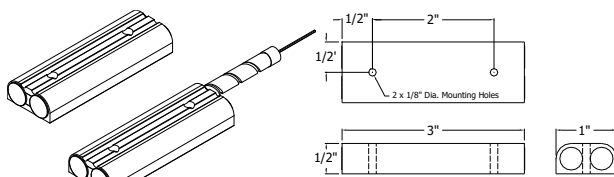
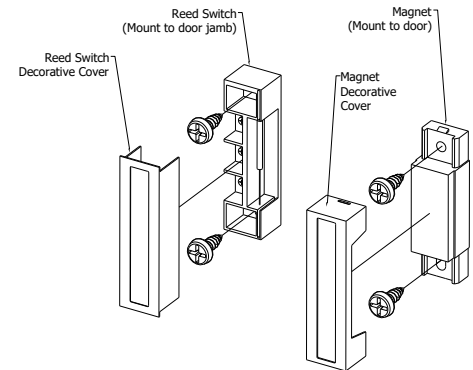
Commercial Surface Mounted (Switch part # 99-018)

### Industrial Type

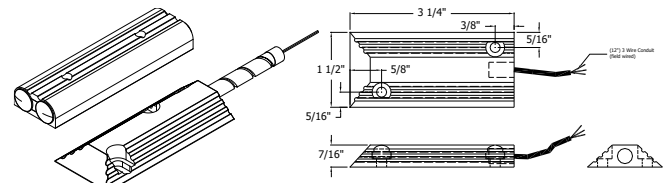
- Floor Mounted (99-124) and Surface Mounted (99-125) Magnetic Reed Switch
  - Rated for NEMA 1 applications (field installed by others)
  - Rated up to 120Vac
  - Maximum amperage rating is 3A
  - 12" conduit leads provided (field wired by others)
  - Green wire is normally open (NO), red wire is normally closed (NC), and white is common (COM)
  - Maximum acceptable gap of 1/2" (industrial) between magnet and reed to activate switch
  - Heavy duty extruded aluminum construction

### Options and Accessories: (see Accessories Brochure)

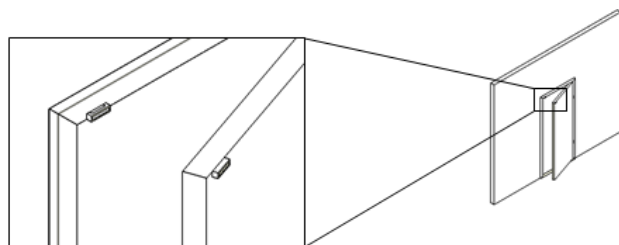
- ❖ MTD-ACC, Factory mounted RIB control package
- ❖ RMT-\*, \*2S – Two speed or \*3S – Three speed control (1Ø only)
- ❖ RMT-VS+, Variable speed control (+A – 115v/1Ø or +D – 208-240v/1Ø)



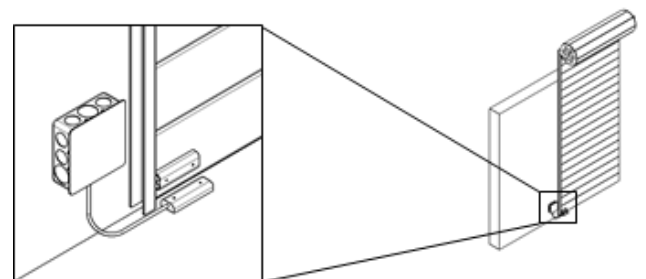
Industrial Surface Mounted (99-125)



Industrial Floor Mounted (99-124)



Typical Commercial Surface Mounted Switch (99-018) Installation Shown



Typical Industrial Floor Mounted (99-124) Installation Shown

NOTE: MARS AIR SYSTEMS, LLC reserves the right to change specifications and product design without notice. Such revisions do not entitle the buyer to corresponding changes, improvements, additions, or replacements for previously purchased equipment.

# Solid State (RIB) Control Packages



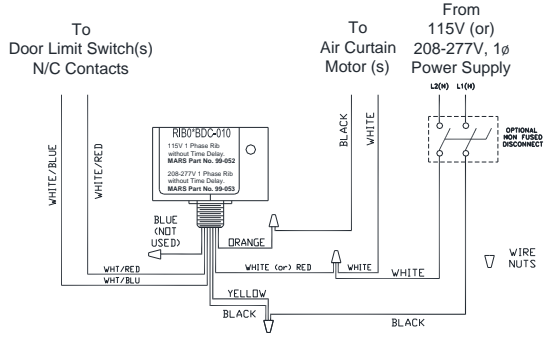
Commercial and Industrial Models

atmosphere is everything

14716 S. BROADWAY, GARDENA, CA 90248 • Ph: (310)532-1555 Fax: (310)-532-3030 • [www.marsair.com](http://www.marsair.com)  
© Copyright Mars Air Systems, LLC 2014

## Wiring Diagrams:

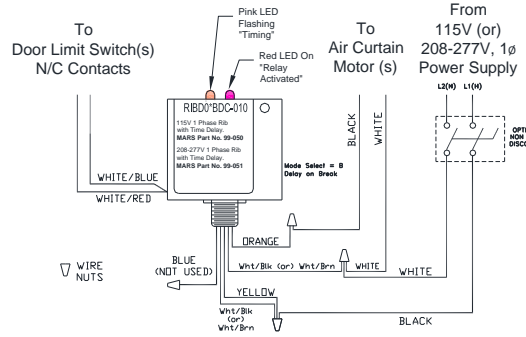
- RIB Kit Rating:
- 115v or 208-230v
  - 1/2 HP Max



- RIB Kit Part Numbers:
- 115v/1φ
  - J0023, J0036, J0100
  - 208-230v/1φ
  - J0024, J0037, J0104

Note:  
The controllers are wired the same, but are not interchangeable.

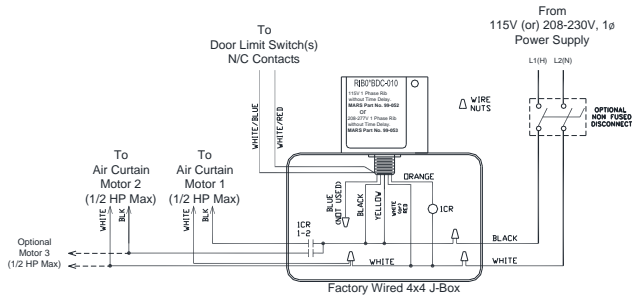
- RIB Kit Rating:
- 115v or 208-230v
  - 1/2 HP Max
  - Adjustable Time Delay



- RIB Kit Part Numbers:
- 115v/1φ
  - J0021, J0028, J0038, J0102
  - 208-230v/1φ
  - J0022, J0029, J0042, J0106

Note:  
The controllers are wired the same, but are not interchangeable.

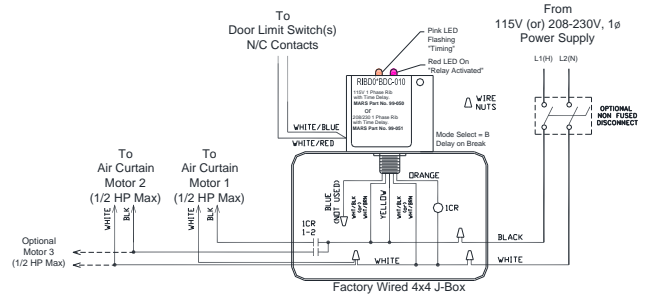
- RIB Kit Rating:
- 115v or 208-230v
  - 1 HP Max



- RIB Kit Part Numbers:
- 115v/1φ
  - J0705, J0722, J0726
  - 208-230v/1φ
  - J0706, J0723, J0727

Note:  
The controllers are wired the same, but are not interchangeable.

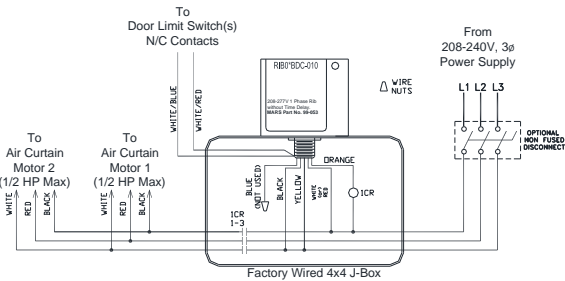
- RIB Kit Rating:
- 115v or 208-230v
  - 1 HP Max
  - Adjustable Time Delay



- RIB Kit Part Numbers:
- 115v/1φ
  - J0703, J0708, J0720, J0724
  - 208-230v/1φ
  - J0704, J0709, J0721, J0725

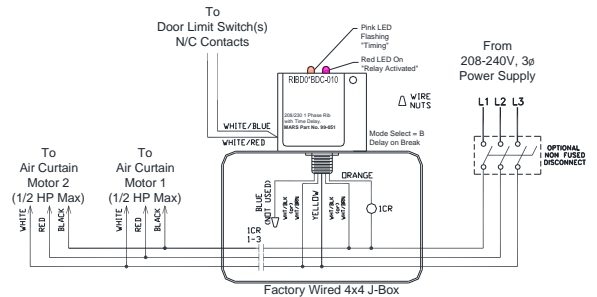
Note:  
The controllers are wired the same, but are not interchangeable.

- RIB Kit Rating:
- 208-230v/3φ
  - 1 HP Max



- RIB Kit Part Numbers:
- 208-230v/3φ
  - J0760, J0761, J0762

- RIB Kit Rating:
- 208-230v/3φ
  - 1 HP Max
  - Adjustable Time Delay



- RIB Kit Part Numbers:
- 208-230v/3φ
  - J0767, J0764, J0765, J0766

NOTE: MARS AIR SYSTEMS, LLC reserves the right to change specifications and product design without notice. Such revisions do not entitle the buyer to corresponding changes, improvements, additions, or replacements for previously purchased equipment.