



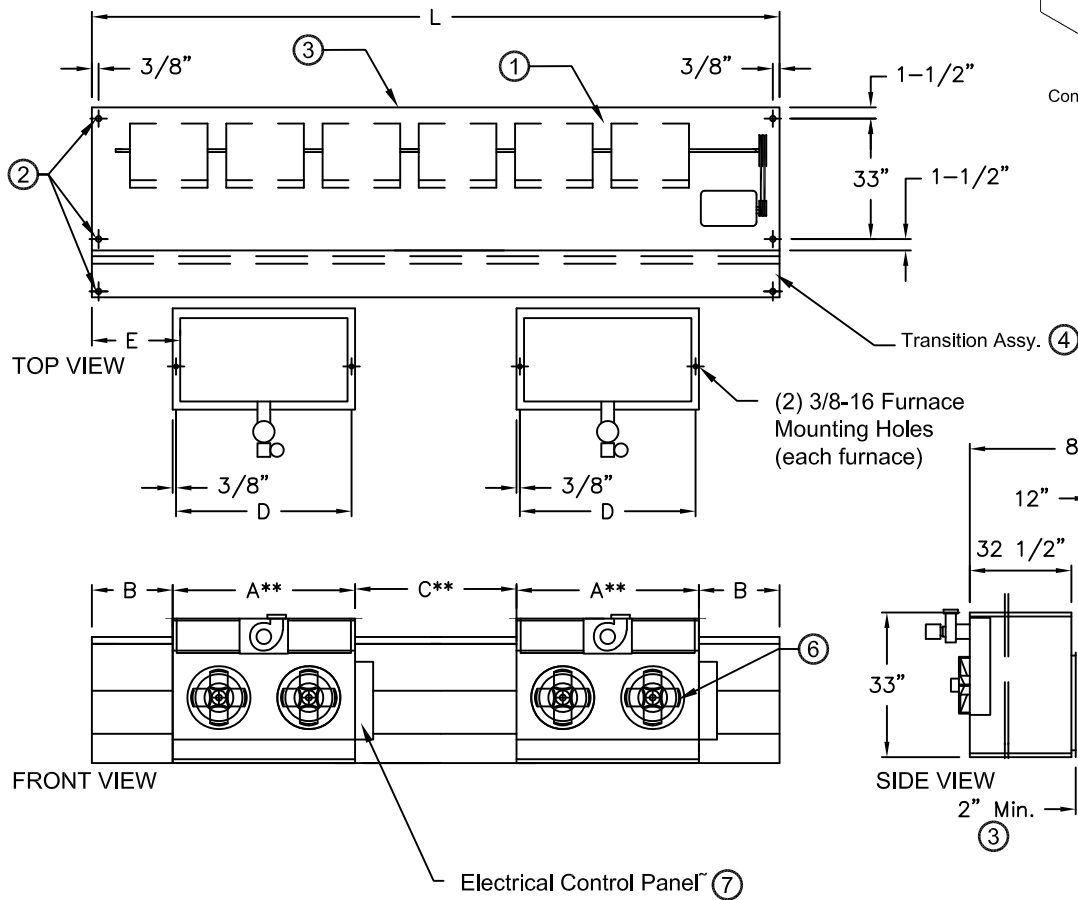
atmosphere is everything

14716 S. Broadway • Gardena, CA 90248 • USA
 TEL:(310) 532-1555 • (800) 421-1266 • FAX:(310) 324-3030
 Web Site: www.marsair.com • E-mail:info@marsair.com

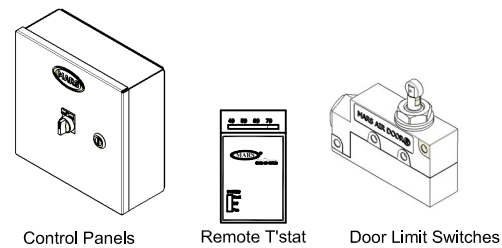
PROJECT		OPTIONS/ITEMS	
TITLE			
COMMENTS		DATE 4/21/15	PAGE
		REV. NO	
MODEL NO. BD18 Series	DRAWING NO BD18IG-F	DRAWN BY TVN	CHECKED BY
		FILE NAME	

Indirect Fired Gas Heated Drawing

BD18 (Belt Driven 18) Series



⑧ Recommended Accessories



Note: MARS reserves the right to change specifications and product design without notice. Such revisions do not entitle the buyer to corresponding changes, improvements additions or replacements for previously purchased equipment.

*Please see Furnace Submittal for Furnace Data and Dimension
 Removal of Furnace may be required for servicing and trouble shooting.

*- Use corresponding letters in "Electrical Data" columns to complete the model numbers.

** For 3 furnace models, please add an additional C and A dims

MODEL NUMBER	Overall Width (in) L	Furnace Width (in) A	End Space (in) B	Center Space (in) C	Mounting Distance (in) D	End Dim (in) E	Furnace Size (MBH)
BD1896-11*-TS	107	32 3/4	10 3/8	20 3/4	30 5/8	11 3/4	2 @ 250
BD18120-11*-TS	131	50 3/4	7 3/8	14 3/4	48 5/8	8 3/4	2 @ 400
BD18144-11*-TS	155	50 3/4	13 3/8	26 3/4	48 5/8	14 3/4	2 @ 400
BD18168-11*-TS	179	50 3/4	-	12 1/2	48 5/8	2 1/4	3 @ 400
BD18192-11*-TS	203	50 3/4	8 11/24	16 11/12	48 5/8	9 5/6	3 @ 400

Notes:

- The Air Curtain is designed to comply with the National Electric Code (NEC) and the Furnaces are ETL verified to be 83% efficient with 3/8 overhead mounting hardware for overhead mounting.
- 7/8" mounting holes (4) provided, (2) on each end of air curtain and 5/8" mounting holes (2) provided, (1) on each end of transition assembly.
- Cabinet has sufficient strength for fastening from overhead on both ends without intermediate support. Furnace must be mounted at least 2" away from the transition.
- Powder coated Transition pieces are fully factory assembled and shipped mounted to the air curtain.
- Unit is to be installed such that air flow is unobstructed. Air discharge nozzle containing adjustable air directional vanes with 40° sweep front to back.
- Furnaces with impellers have positive pressure, 20 gauge aluminized tubular heat exchanger with in-shot burner technology, power vented exhaust (horizontal or vertical), single stage gas valve, direct spark ignition and certified for Category I and III venting.
- Circuit protection as per NEC by others.
- Optional motor control panel and door limit switch are field installed and/or wired by others. The door limit switch is to be mounted such that the air curtain turns on as door begins to open. To prevent unit damage, the mounting brackets must be installed such that the bottom of the air curtain is not below the door header.

BD18 (Belt Drive 18) Series

Indirect Gas Fired

Model Lengths 96" – 192"



atmosphere is everything

14716 S. BROADWAY, GARDENA, CA 90248 • Ph: (310) 532-1555 Fax: (310) 532-3030 • www.marsair.com
© Copyright Mars Air Systems, LLC 2014

Indirect Gas Fired Data Sheet

Applications: Environmental Separation: Max Height 20' / Insect Control: Max Height 18'

BD18 (WindGuard)	Mechanical Data							Lab Data		
	Model Number	Nozzle Length (in)	Length (in)	Depth (in)	Height (in)	Motor (hp)	Total Weight** (lbs)	Furnace Weight (lbs)	Max Velocity (fpm)	Max Volume (cfm)
	BD1896-1I*-TS	96	107	82 1/2	33	7 1/2	1148	2 @ 211	5100	13800
	BD18120-1I*-TS	120	131	82 1/2	33	7 1/2	1513	2 @ 335	5100	17255
	BD18144-1I*-TS	144	155	82 1/2	33	10	1630	2 @ 335	5100	20700
	BD18168-1I*-TS	168	179	82 1/2	33	10	2082	3 @ 335	5100	24100
	BD18192-1I*-TS	192	203	82 1/2	33	15	2199	3 @ 335	5100	27600

* - Use corresponding letters in "Electrical Data" columns to complete the model numbers.

Note: Data above is for 60 Hz, 17% reduction in the performance data with 50 Hz.

** - Total Weight includes air curtain, transition, and furnace weights.

Features:

Air Curtain and Transition

- ❖ 7 ½ to 15 HP continuous duty premium efficiency industrial TEFC motors
- ❖ Air curtain is a self-contained one-piece heavy gauge corrosion proof paint lock metal design
- ❖ Top mounting holes provided (3/4")
- ❖ Cabinet has sufficient strength for fastening from overhead on both ends without intermediate support
- ❖ Adjustable air directional nozzle with 40° sweep front to back
- ❖ Transition is shipped fully assembled and fastened to unit (overhead support required)
- ❖ Standard color is Titanium Silver
- ❖ Rust preventative electrostatic polyurethane powder coating
- ❖ 12-month parts warranty
- ❖ Freight Not Included (FOB Factory)
- ❖ Proudly Made in the USA

Indirect Gas Fired Furnaces

- ❖ ETL verified to be 83% efficient
- ❖ In-shot burner technology
- ❖ Aluminized tubular heat exchanger (20 gauge)
- ❖ Positive pressure 120V impellers (separate 120V, 1Ø power required)
- ❖ Power vented exhaust
- ❖ Single stage gas valve
- ❖ Standard direct spark ignition
- ❖ Certified for Category I and III Venting
- ❖ Natural gas
- ❖ Factory test fired
- ❖ Overhead mounting hardware provided (2 per furnace)

Mars Recommended Accessories (see submittals for additional details):

- ❖ Door limit switches
 - 99-125, Industrial surface-mounted door limit switch
- ❖ Controllers
 - MCP*-†‡, Motor Control Panel, 24V control voltage (* = HP Code, † = # of Motors, ‡ = Voltage Code)
Note: possible HP Codes = G (7½ HP), H (10 HP), I (15 HP)
 - MCP-TD, Adjustable time delay, 1sec-100hr (panel required)
- ❖ IDF-2STG, Two-stage heat exchanger
- ❖ IDF-SS, 409 stainless steel heat exchanger
- ❖ IDF-MOD-RS, Room sensor for modulating gas valves (0-10VDC/4-20mA control voltage by others)

Sound Levels: (measured at 10' in an open field)

7 ½ HP Motor Unit = 74 dBA, 10 HP Motor Unit = 75 dBA, 15 HP Motor Unit = 76 dBA

Indirect Gas Fired Data						
Model Number	# of Furnaces	Input MBH per Furnace	Total Output MBH	Temp Rise (°F)	Flue Size	Natural Gas (NPT) CONN
BD1896-1I*-TS	2	250	415	28	5" Rnd	1/2"
BD18120-1I*-TS	2	400	664	36	6" Rnd	3/4"
BD18144-1I*-TS	2	400	664	30	6" Rnd	3/4"
BD18168-1I*-TS	3	400	996	38	6" Rnd	3/4"
BD18192-1I*-TS	3	400	996	33	6" Rnd	3/4"

* - Use corresponding letters in "Electrical Data" columns to complete the model numbers.

Note: Gas pressure required min/max in ("wc)(kPa): Natural Gas (3.5/14)(0.9/3.5) and LP (10/14)(2.5/3.5)

Electrical Data (FLA)	Unit Voltage (Voltage Code)			Furnace
	208/230v (G)	460v (H)	575v (I)	115V
BD1896-1I*-TS	21.6/20.0	10.0	8.9	16.0
BD18120-1I*-TS	21.6/20.0	10.0	8.9	27.0
BD18144-1I*-TS	28.0/26.0	13.0	10.3	27.0
BD18168-1I*-TS	28.0/26.0	13.0	10.3	40.5
BD18192-1I*-TS	42.0/40.0	20.0	15.6	40.5

* - Use corresponding letters in "Electrical Data" columns to complete the model numbers.

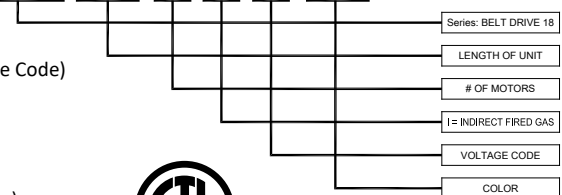
Alternate voltage codes with FLA (Full Load Amp) data:

380-415V/3Ø/50Hz (W) - 8.3A per motor (7½HP), 11.5A per motor (10HP), 15.5A per motor (15HP)

Note: For ampacity, multiply FLA X 1.25

EXAMPLE

BD18 144 - 1 I H - TS



Intertek
Furnace Only